

Installation Instructions

75930 Series

32V DC 300A DPST Master Battery Disconnect Switch

Part Numbers: 75930-01, 75930-02, 75930-03, 75930-01-BP, 75930-02-BP, 75930-03-BP



Expertise Applied | Answers Delivered



Description

With a patented weld breaker safety feature and integrated lockout/tagout, the 75930-Series Battery Master Disconnect Switch with Auxiliary Contact is designed for safely cutting off battery power to all electrical systems aboard heavy-duty vehicles and equipment used in mining, agriculture, construction, and transportation.

This dual-pole, single-throw (DPST) manual battery disconnect switch is constructed with a robust engineered polymer housing, offering a contemporary design that stands up to the harsh conditions typically found in commercial vehicle environments. Carrying an IP67/IPX9K rating, the switch is protected against dust, debris, and water.

Ordering Information

| PART NUMBERS | DESCRIPTION |
|--------------|--|
| 75930-01 | Master Disconnect Switch, red handle, bulk packaging |
| 75930-02 | Master Disconnect Switch, yellow handle, bulk packaging |
| 75930-03 | Master Disconnect Switch, black handle, bulk packaging |
| 75930-01-BP | Master Disconnect Switch, red handle, blister packaging |
| 75930-02-BP | Master Disconnect Switch, yellow handle, blister packaging |
| 75930-03-BP | Master Disconnect Switch, black handle, blister packaging |

Web Resources

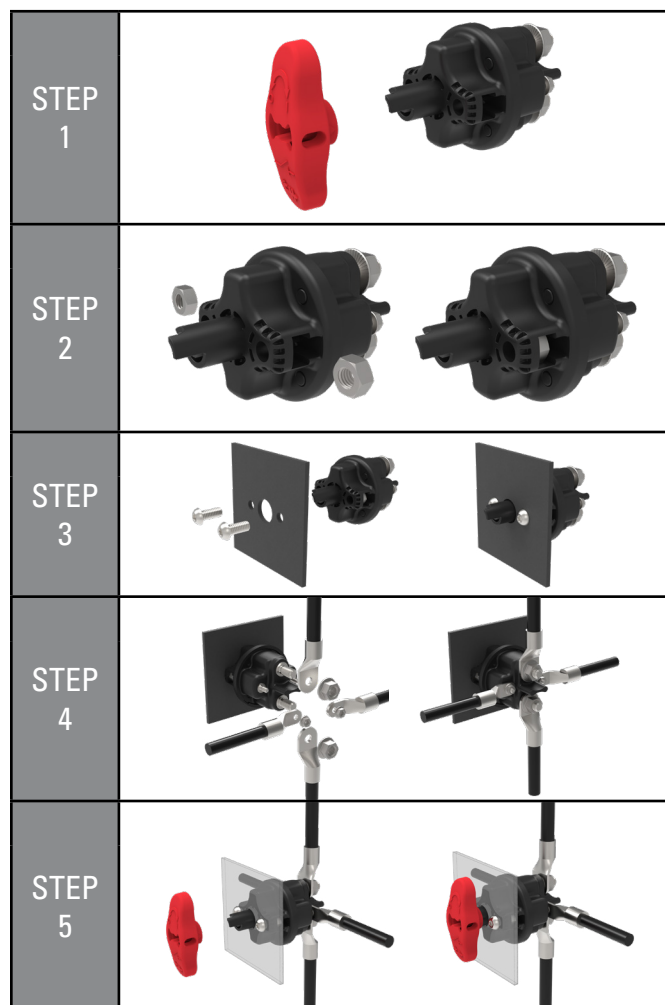
Download datasheet, 2D print, 3D model and more at:

[Littelfuse.com/75930](https://www.littelfuse.com/75930)

Installation

Assemble the "Switch" in the following sequence:

1. Remove the handle, using a #1 Phillips head screw driver, being sure the switch is in the OFF position.
2. Insert an M8 standard nut (included with product) in each of the 2 seats of the housing. Make sure they click in place, becoming captive.
3. Insert the switch in the suitable seat (chassis or bracket, with 8.5mm max thickness provided with holes as per mounting template). Fix it by means of two M8 standard screws (included with product) to be tightened with a torque of 14 ± 2 Nm.
4. Mount the power cables on the M10 stud. Fix them with tightening torques of 18 ± 2 Nm.
5. Mount the handle by tightening the provided screw to a torque of 0.6 ± 0.2 Nm, by using a #1 Phillips head screw driver.



Specifications, descriptions and illustrative material in this literature are as accurate as known at the time of publication, and are subject to changes without notice. Visit [littelfuse.com](https://www.littelfuse.com) for the most up-to-date technical information.

Installation Instructions

75930 Series

32V DC 300A DPST Master Battery Disconnect Switch

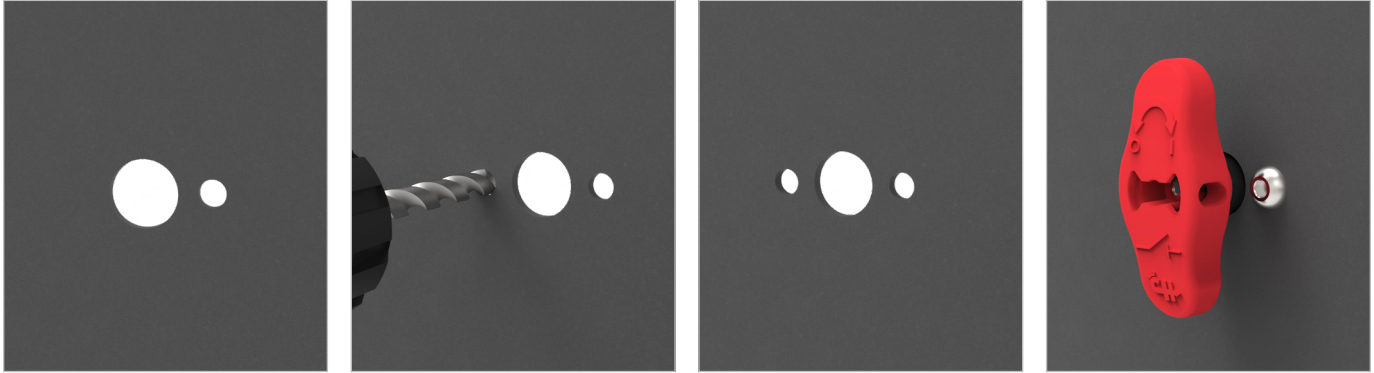


Expertise Applied | Answers Delivered

Installation Diagrams

Mounting Drill Holes

Additional mounting holes may be necessary when installing the Master Battery Disconnect Switch. A drill bit of 8.5mm or Imperial bits of 11/32" or 3/8" is required for clearance around the switch's 8mm mounting bolts.



Terminals



Integrated Lockout/Tagout

Accepts a 6.5-millimeter shackle for enhanced safety and security.

