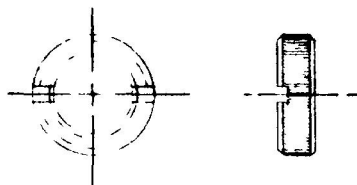


59024-13

MM	IN
6.85	.270
13.30	.524
13.46	.530
19.05	.750
33.52	1.320
39.14	1.541



FACE NUT



TOGGLE

TOGGLE, BLACK PLASTIC

FACE NUT, BLACK (NOTE 4)

BUSHING, BLACK 15/32-32UNS

INK STAMP PART NO. & DATE CODE (WEEK & YEAR)

MALE BLADE TERMINAL  
TIN PLATED, 3 REQ'D

"ON"  
5+6

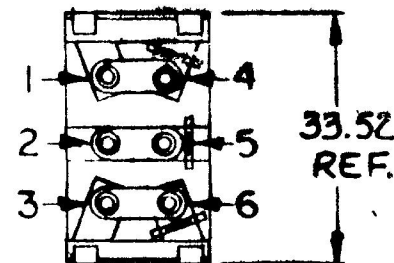
"OFF"

"ON"  
5+4

6.85  
REF.

39.14  
REF.

13.30  
13.46




19.05  
REF.

NOTES:

1. SILVERED CONTACTS.
2. ALL STEEL PARTS PLATED.
3. 25 AMPS @ 12 V.D.C.
4. FACE NUT ASSEMBLED

METRIC

DO NOT SCALE

LET	WAS	DATE	BY	LET	WAS	DATE	BY	MATERIAL	DRAWN	CHECKED	APPR'D	SCALE	DATE DRAWN
								—#—	VAK			1:1	3/25/86
								FINISH					DATE BLUEPRINT
								—#—					
								TOLERANCES	 SW. TOGGLE S.P.D.T.				59024-13
							DECIMAL ±						
								METRIC ±					
					ISSUED	8-28-86	A						

BRUN: VG 40-21 63765

EX21032B

CH-188(4-78)