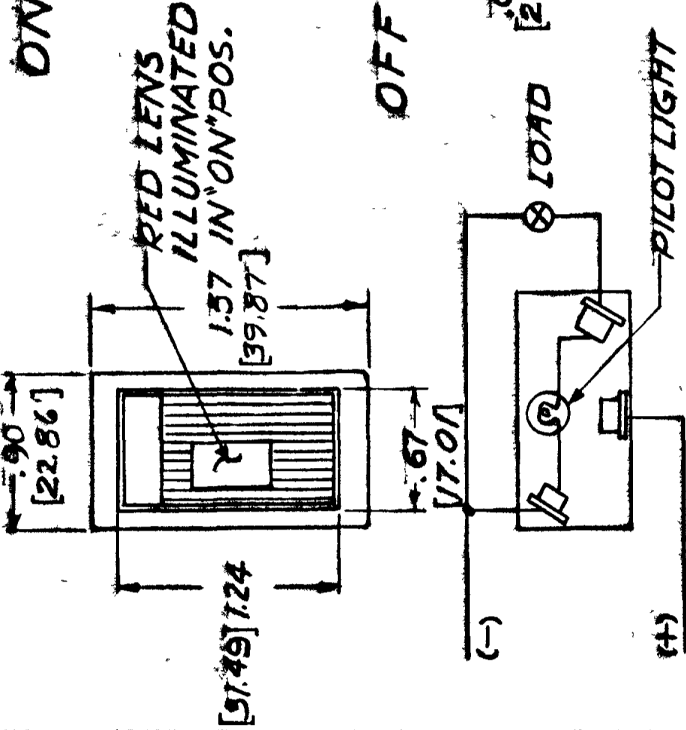
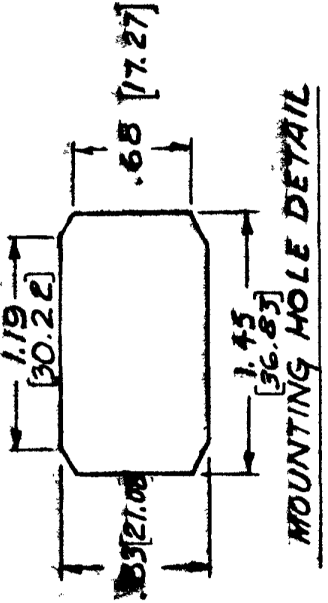
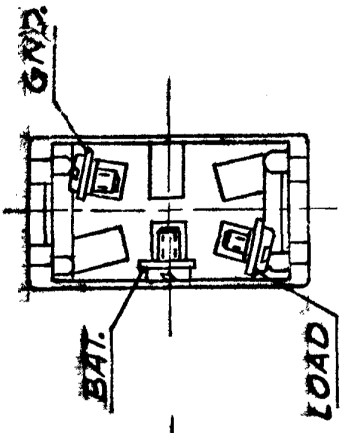


56300-01
56300-05



ROCKER, WHITE
BEZEL, STEEL, NICKEL PLT, BRIGHT FINISH
INSULATOR, MOLDED PHENOLIC
TERMINAL, BRASS
SCREW, BRASS # 0-32 THD. (3 PLACES)



NOTE
SILVER CONTACT RIVETS AND
SILVER CONTACT PAD

HEAVY DUTY

DO NOT SCALE

LET	WAS	DATE	BY LET	DATE	WAS	DATE	BY	MATERIAL	DRAWN	CHECKED	APPR'D	SCALE	DATE DRAWN
								$\frac{1}{8}$	S.B.			56300 WITH FULL NARROW BEZEL REPLACING BRKT.	3-25-74
			H	1/20/74			KS	FINISH					DATE BLUEPRINT
			G	1/13/75				TOLERANCES FRACTIONAL ± DECIMAL ±					
			F	RE-DRAWN			S.B.						

56300-05 SAME AS 56300-01 EXCEPT BEZEL NICKEL PLT-DULL FINISH

COLE-HERSEE COMPANY
BOSTON, MASS. 02127, U.S.A.
SP5T ROCKER SWITCH WITH PILOT LIGHT