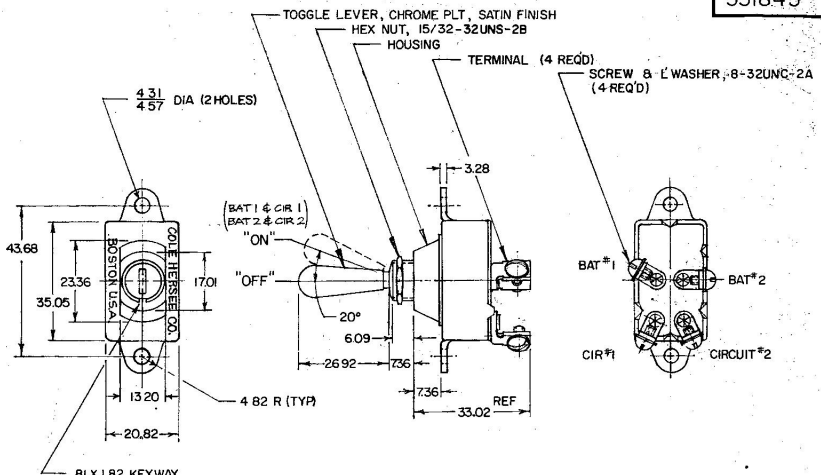


MM IN
 .25 .010
 .281 .011
 .312 .012
 .343 .013
 .375 .014
 .406 .015
 .437 .016
 .468 .017
 .500 .018
 .531 .019
 .562 .020
 .593 .021
 .625 .022
 .656 .023
 .687 .024
 .718 .025
 .750 .026
 .781 .027
 .812 .028
 .843 .029
 .875 .030
 .906 .031
 .937 .032
 .968 .033
 1.000 .034
 1.031 .035
 1.062 .036
 1.093 .037
 1.125 .038
 1.156 .039
 1.187 .040
 1.218 .041
 1.250 .042
 1.281 .043
 1.312 .044
 1.343 .045
 1.375 .046
 1.406 .047
 1.437 .048
 1.468 .049
 1.500 .050

551845



NOTE
 1 SILVERED CONTACTS
 2 EXTRA HEAVY DUTY
 3. HEX NUT & SCREWS TO BE BAGGED
 DO NOT SCALE

METRIC

Confidential property of Cole Hersee

LET.	WAS	DATE	BY	LET	WAS	DATE	BY	MATERIAL	DRAWN	CHECKED	APPROVD.	SCALE	DATE DRAWN
								— #	RZ	6/12/80		1:1	5-5-85
								FINISH — #	 COLE HERSEE CO. 80 WILLOW AVENUE BOSTON, MA, U.S.A. 02117				DATE BLUEPRINT
								TOLERANCES DECIMAL ± METRIC ± .25	DP-ST TOGGLE SWITCH				551845