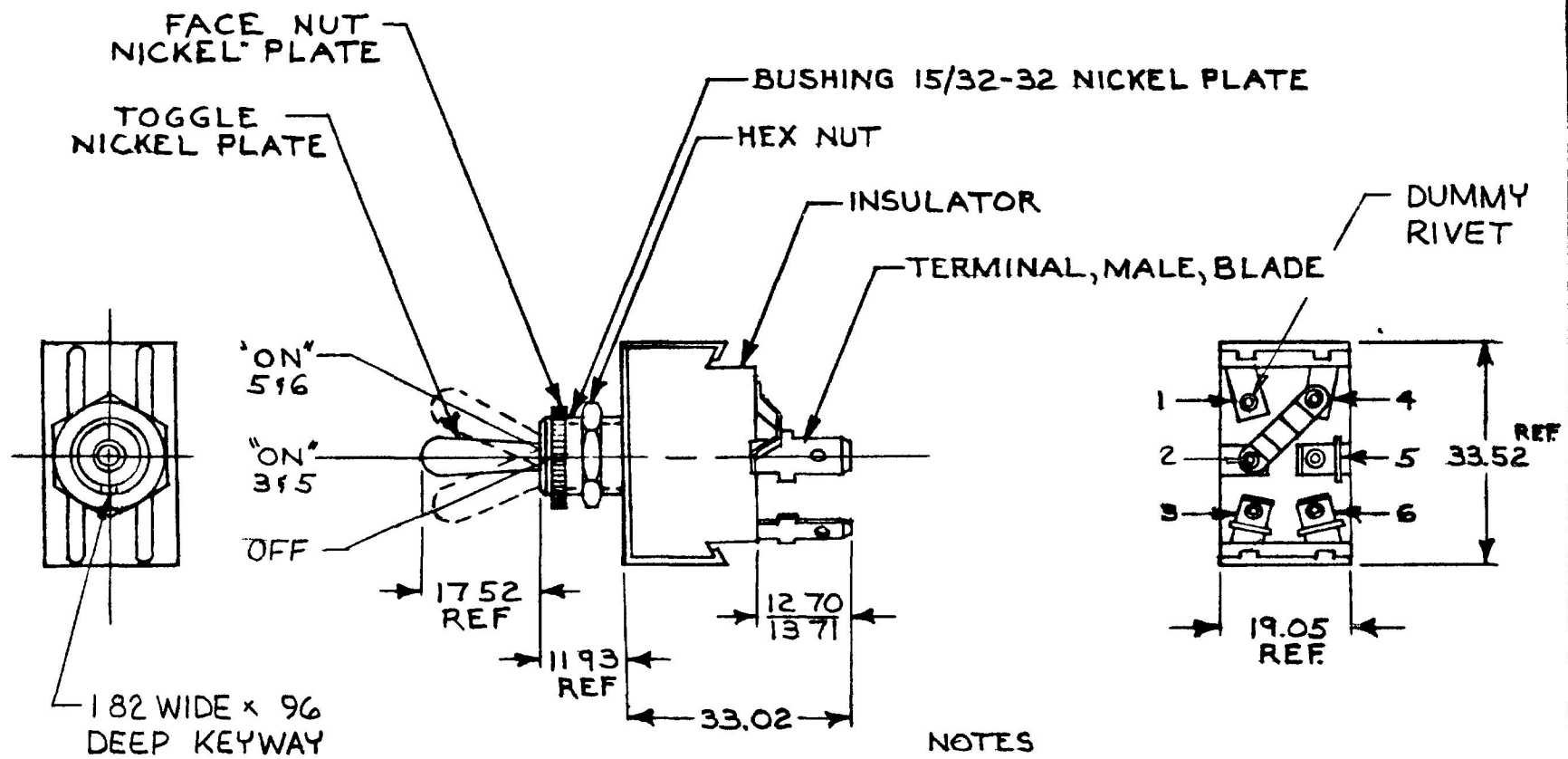


55093

MM IN
 .96 .038
 1.82 .072
 11.93 .470
 12.70 .500
 13.71 .540
 17.52 .690
 19.05 .750
 33.02 1.300
 33.52 1.320

EX 22308



- NOTES
- 1 HEAVY DUTY
 - 2 SILVER CONTACTS
 - 3 25 AMPS @ 12 VDC LAMP LOAD
 - 4 ALL STEEL PARTS PLATED

METRIC

DO NOT SCALE

LET	WAS	DATE	BY	LET	WAS	DATE	BY	MATERIAL	DRAWN	CHECKED	APPR'D	SCALE	DATE DRAWN
								<i>rk</i>	20	<i>(Signature)</i>		1:1	3-2-87
								FINISH					DATE BLUEPRINT
								TOLERANCES					
								DECIMAL ±					
								METRIC ±					
					ISSUED	3-9-87	<i>RF</i>						55093

CH-100(4-78)

CH Cole Hersee Co.
30 OLD COLONY VENUE SOUTH DORSET, MA. U.S.A. 01927
 SWITCH,
 TOGGLE 3 POS