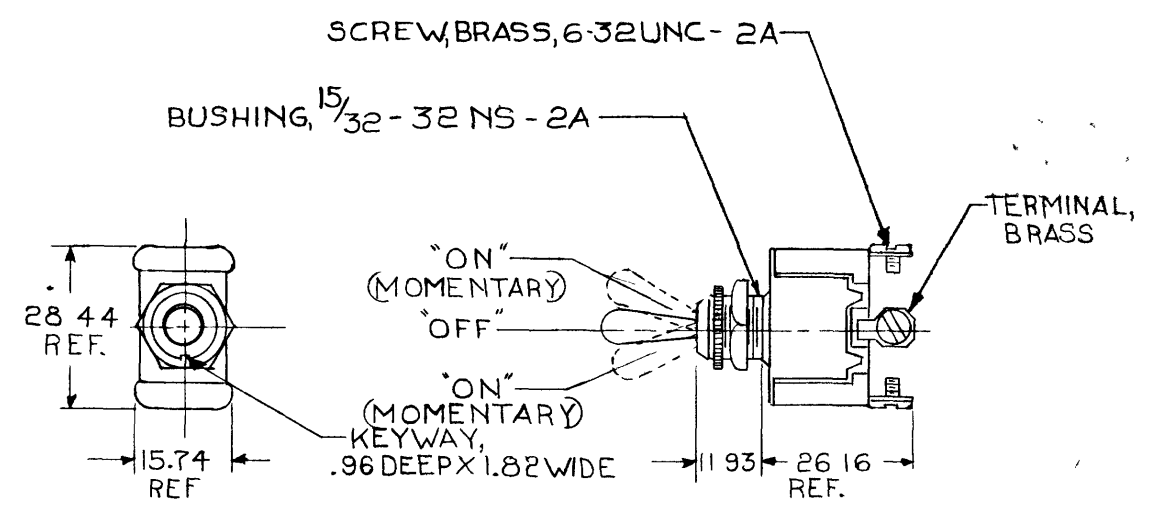


MM-IN  
 .96 - 038  
 1.52 - 060  
 1.82 - 072  
 11.93 - 470  
 14.98 - 590  
 15.74 - 620  
 26.16 - 1.030  
 28.44 - 1.120

55021

NOTE:  
 Ⓞ SILVER CONTACT SURFACES

BLAOR  
 55033-01



METRIC

RATING: 25A @ 12V DC  
 10A @ 24V DC

DO NOT SCALE

LET	WAS	DATE	BY	LET	WAS	DATE	BY	MATERIAL	DRAWN	CHECKED	APPRV'D	SCALE	DATE DRAWN
								FINISH	WD	3-5-80		1:1	1-22-59
				E	ECR # 09805	11/21/13	CM		<b>Cole Hersee Co</b> CO 0000 1 E US 80 10M U 0 2				DATE BLUEPRINT
				D	ADD NOTE 95432	9/15/93	TJH	TOLERANCES	SPDT TOGGLE SWITCH (MOMENTARY)				55021
				C	REDRAWN	11/80	DS	DECIMAL ± METRIC ±					

CH 188(4 78)

Confidential Property of Cole Hersee