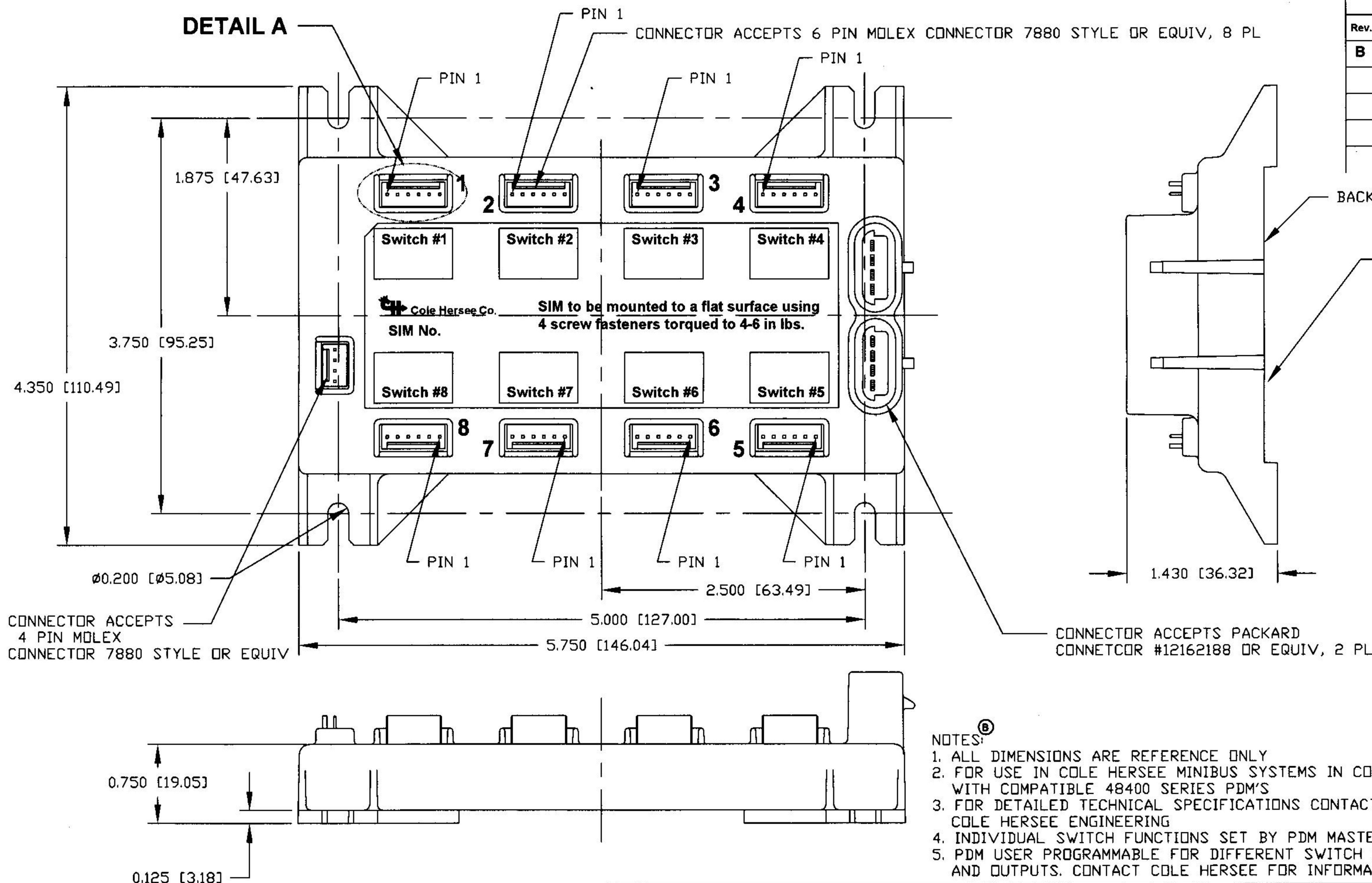


**Revision Control Record**

Rev.	Description of Change	ECN No.	Date
B	ADD NOTES	04415	10/22/04

**DETAIL A**



BACK HENCOL #47 SEALED

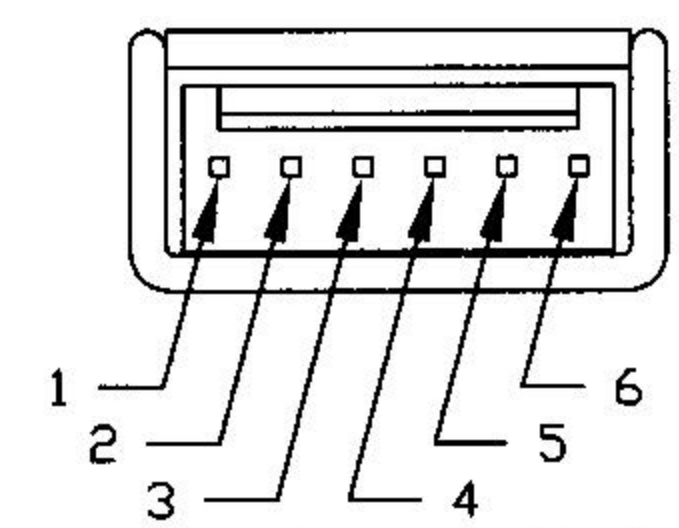
HOUSING, PLASTIC, BLUE

**DETAIL A**

SCALE 2:1  
TYP 8 PL

PIN	LEGEND
1	+5 VDC
2 *	LED, NO BUMPS SIDE
3 *	LED, BUMPS SIDE
4	SW., COMMON
5 *	SW., NO BUMPS SIDE
6 *	SW., BUMPS SIDE

\* REFERENCE TO COLE HERSEE'S DS ROCKER SWITCH



- NOTES: <sup>(B)</sup>
1. ALL DIMENSIONS ARE REFERENCE ONLY
  2. FOR USE IN COLE HERSEE MINIBUS SYSTEMS IN CONJUNCTION WITH COMPATIBLE 48400 SERIES PDM'S
  3. FOR DETAILED TECHNICAL SPECIFICATIONS CONTACT COLE HERSEE ENGINEERING
  4. INDIVIDUAL SWITCH FUNCTIONS SET BY PDM MASTER PROGRAM.
  5. PDM USER PROGRAMMABLE FOR DIFFERENT SWITCH CONFIGURATIONS AND OUTPUTS. CONTACT COLE HERSEE FOR INFORMATION

**Tolerances.** Unless otherwise specifically noted, the following are default tolerances:  
 • 2-place Decimal Dimensions  $\pm .02^\circ$   
 • 3-place Decimal Dimensions  $\pm .005^\circ$   
 • Angular Dimensions  $\pm 1.0^\circ$   
 • Metric: Refer to equivalent English Dimension Tolerance  
 >>> NOTE: All tolerances are Non-Cumulative. <<<

**Dimensional Units.** All dimensions are expressed in inches except those shown in brackets (xxx) are expressed in millimeters

**REF. or an Asterisk (\*)** = Non-Toleranced Reference Dimension, shown for clarification purposes only.

Used On or Ref.: **REX27481A** Scale: **1:1**

**PROPRIETARY INFORMATION.** This Engineering Drawing, and the information contained herein, is proprietary to Cole Hersee Company and may not be disclosed, re-produced, or in any other way transferred or communicated to any other party without the express written consent of an authorized representative of Cole Hersee Company.

**DESIGN CONTROL.** It is the responsibility of the individual using/ referencing this drawing to assure that the noted design revision level agrees with the revision level of the Controlled Document (Master Drawing). This is a NON-CONTROLLED DOCUMENT unless otherwise specifically noted.

DO NOT SCALE - Dimensional variation may occur during printing/ reproduction.

Drawn By: **DPS** Date Drawn: **4/2/02**

**Key for Special Characteristics:**

- Critical Characteristic, relating to Safety and/or Regulatory Compliance
- Significant Characteristic relating to Process Control (SPC)
- Control Dimension relating to Form - Fit - Function as defined by Cole Hersee Company and/or the Customer

(Note that the identification of any Characteristics as being "Special" does not alter the requirement that ALL specified dimensions & tolerances must be met.)

Responsible Engineer: **SAM** Pg. 1 of 1

**Cole Hersee Co.**  
 20 Old Colony Ave., South Boston, MA, 02127  
 Pnri 617-268-2100 Webi www.colehersee.com

Description: **SIM**

Drawing/ Part No.: **48450** Current Rev.: **B**