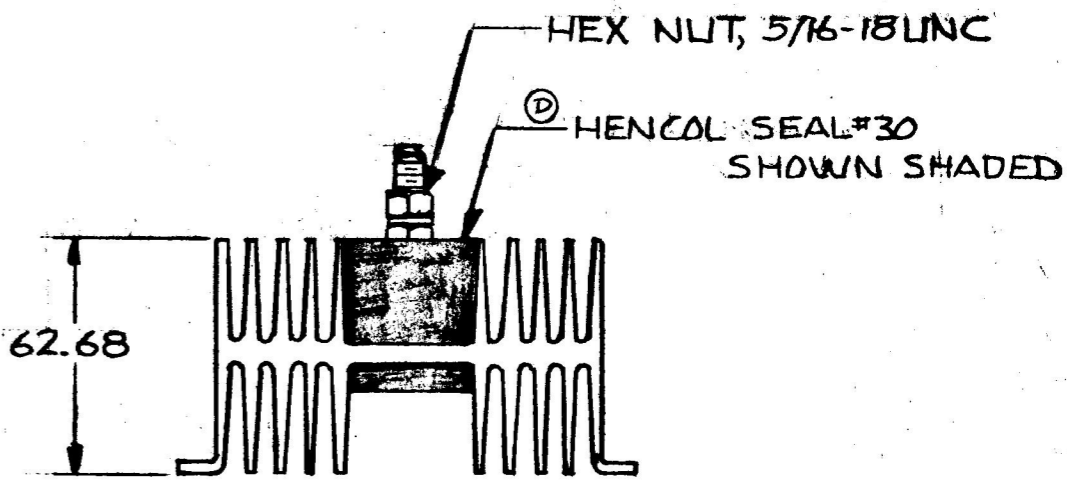
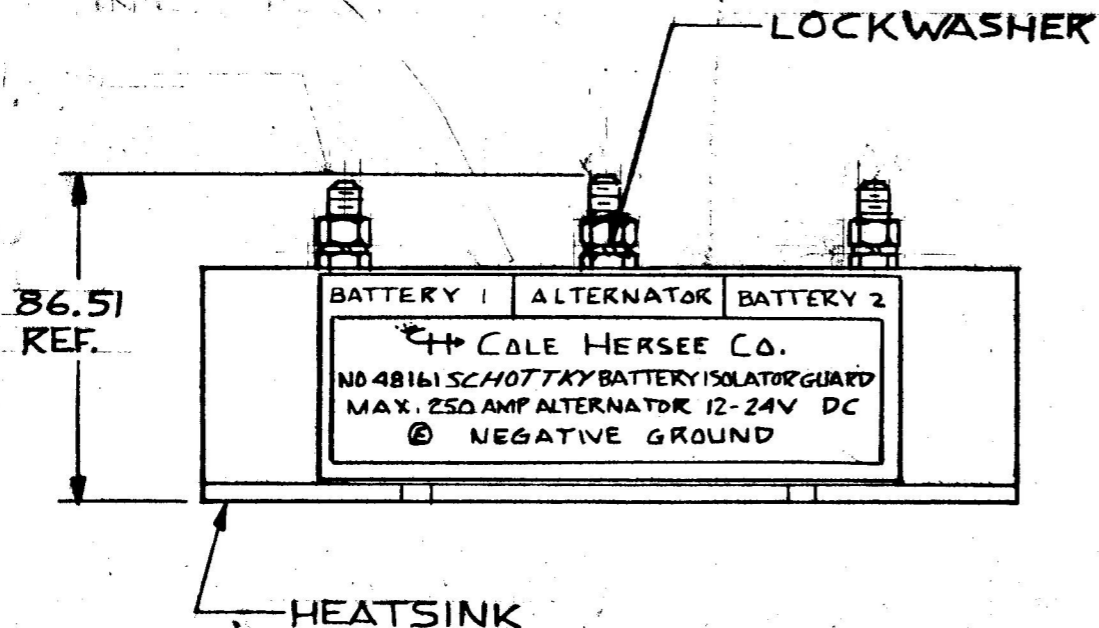
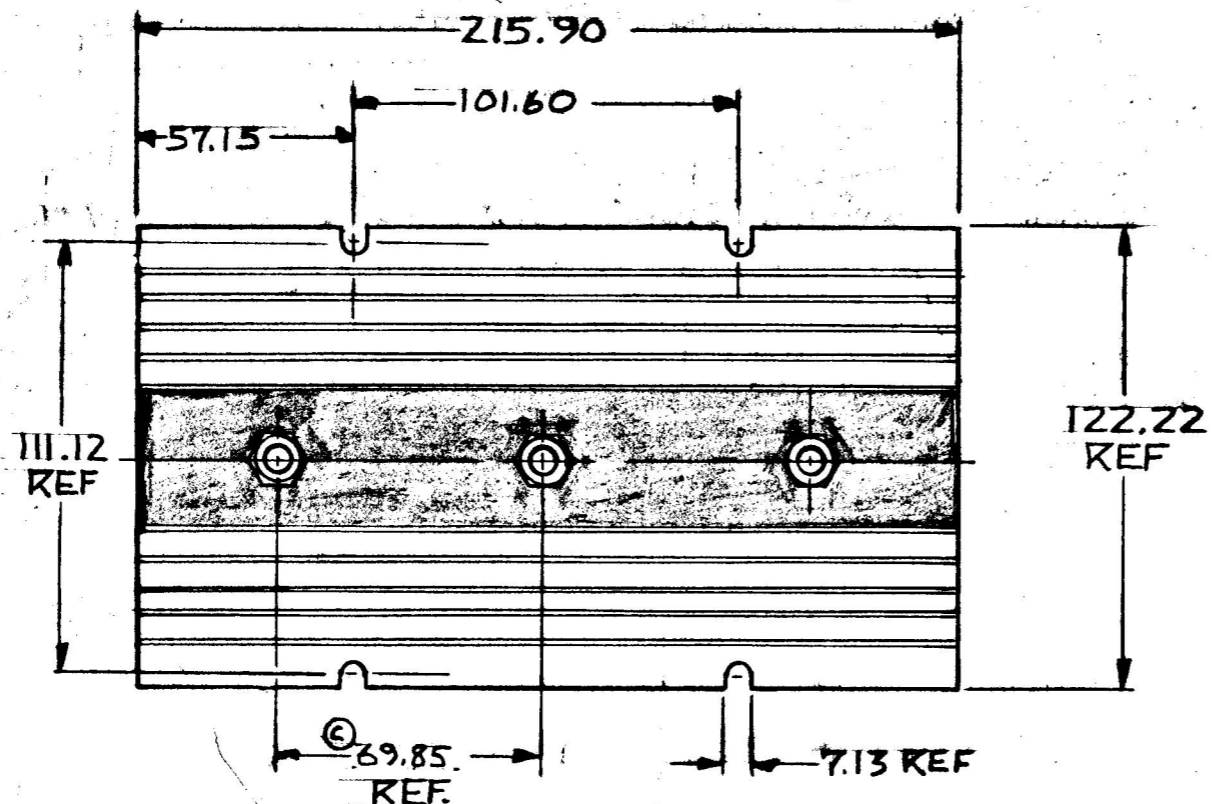


MM 17  
7.13 .281  
57.12 2.290  
62.68 2.468  
86.51 3.406  
101.60 4.000  
122.22 4.812  
215.90 8.500  
69.85 2.750  
111.42 4.375

COLE-HERSEE CO.  
EX19679



NOTE:  
ALL STEEL PARTS PLATED

METRIC

DO NOT SCALE

| LET. | WAS | DATE | BY | LET. | WAS               | DATE    | BY | MATERIAL                     | DRAWN | CHECKED  | APPRVD. | SCALE                                      | DATE DRAWN     |       |
|------|-----|------|----|------|-------------------|---------|----|------------------------------|-------|--|---------|--|----------------|-------|
|      |     |      |    | E    | ECN 23988         | 3-31-89 | JK |                              | PS    | RA   |         | 1/2:1                                      | 8-21-81        |       |
|      |     |      |    | D    | REVISED NOTE      | 1/30/81 | PS | FINISH                       |       |  |         |  | DATE BLUEPRINT |       |
|      |     |      |    | C    | 34.92             | 9-22-82 | PS |                              |       |  |         |  |                |       |
|      |     |      |    |      | ISSUED            | 3-17-82 | RA | TOLERANCES                   |       |  |         |  |                |       |
|      |     |      |    | B    | REVISED & REDRAWN | 3-3-82  | PS | DECIMAL ±.010<br>METRIC ±.25 |       |  |         |  |                |       |
|      |     |      |    |      |                   |         |    |                              |       | <br>20 OLD COLONY AVENUE, SOUTH BOSTON, MA. U.S.A. 02127 |         | 160 AMP SCHOTTKY<br>BATTERY ISOLATOR GUARD |                | 48161 |