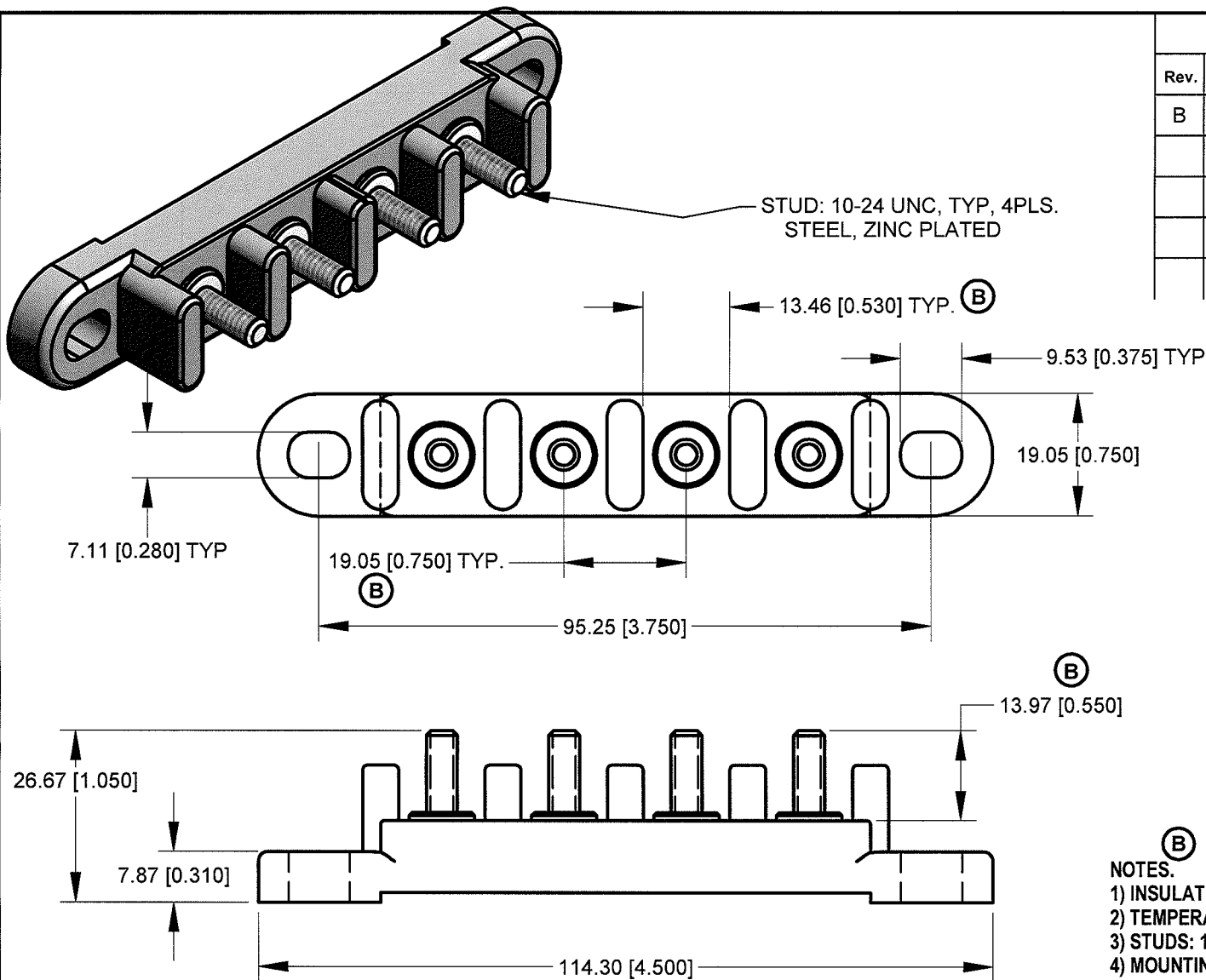


Revision Control Record

Rev.	Description of Change	ECN No.	Date
B	UPDATED DRAWING TO 3D	13094	3/20/13

STUD: 10-24 UNC, TYP, 4PLS.
STEEL, ZINC PLATED



NOTES.

- 1) INSULATOR MATERIAL: THERMOPLASTIC, BLACK
- 2) TEMPERATURE RATING: 250°F (120°C)
- 3) STUDS: 10-24; TORQUE RATING: 25 IN-Lbs (2.8 N.m) MAX.
- 4) MOUNTING TORQUE SPEC: 24 IN-Lbs (2.7 N.m) MAX.
- 5) ELECTRICAL RATING: 30A PER STUD; 600 VOLTS

Note: unless noted otherwise all dimension are **AFTER** plating
Tolerances Unless otherwise specifically noted, the following are default tolerances;

2-places	3-places	Angular
+/- 0.50[0.02]	+/- 0.13[0.005]	+/- 1°

Unless otherwise specified dimensions are in millimeters
Dimensions in brackets [] are in inches
"REF" = Non-Toleranced Reference Dimension, shown for clarification purposes only.
NOTE: All tolerances are Non-Cumulative.

PROPRIETARY INFORMATION
All information contained herein, is proprietary to the Cole Hersee Company. Unauthorized use or reproduction is prohibited.

Special Characteristics:

- CC** Critical Characteristic, relating to Safety and/or Regulatory Compliance
- X** Significant Characteristic relating to Process Control
- CC** Control Dimension relating to Form - Fit - Function as defined by Cole Hersee Company and/or the Customer



Littelfuse[®]

Phn: 617-268-2100 Web: www.colehersee.com

Description: **TERMINAL BLOCK, 4P**

Drawing / Part No.:

4758

Current Rev.

B