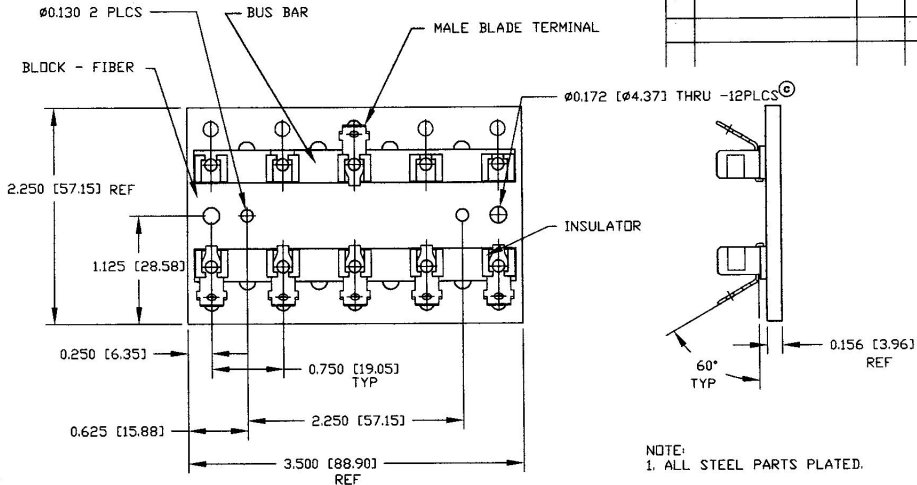


### Revision Control Record

Rev.	Description of Change	ECN No.	Date
C	PUT ON CAD, NOTE CHANGE	03293	02/25/04



NOTE:  
1. ALL STEEL PARTS PLATED.

**TOLERANCES:** Unless otherwise specifically noted, the following are default tolerances:  
 \* 3-place Decimal Dimensions  $\pm .01$   
 \* 2-place Decimal Dimensions  $\pm .005$   
 \* Angular Dimensions  $\pm 1.5$  Deg.  
 \* Holes: Refer to equivalent English Dimension Tolerance  
 \*\*\* NOTE: All tolerances are Non-Cumulative, unless otherwise specified.

**Dimensional Limits:** All dimensions are expressed in inches unless shown in brackets (mm) as expressed in millimeters.

**"REF." or an Asterisk (\*):** Non-Tolerance Reference Dimension, shown for identification purposes only.

**PROPRIETARY INFORMATION:** This Engineering Drawing, and the information contained herein, is proprietary to Cole Horse Company and may not be disclosed, reprinted, or in any other way transferred or communicated to any other party without the express written consent of an authorized representative of Cole Horse Company.

**DRAWING CONTROL:** It is the responsibility of the individual using/referencing this drawing to ensure that the latest design revision level is agreed with the revision level of the Controlled Document (Master Drawing). This is a NON-CONTROLLED DOCUMENT unless otherwise specifically noted.

**DO NOT SCALE:** Dimensional variation may occur during printing/reproduction.

**Special Characteristics:**

- Critical Characteristic, relating to Safety and/or Regulatory Compliance
- Significant Characteristic relating to Process Control (PPC)
- Key Characteristic relating to Form - Fit - Function as defined by Cole Horse Company and/or the Customer

(Note that the Identification of any Characteristics as being "Special" does not alter the requirement that ALL specified dimensions & tolerances must be met.)

**Cole Horse Co.**  
 28 Old Colony Ave., South Boston, MA, 02127  
 Phone: 617-368-2100 Web: www.colehorse.com

**Description:**

## FUSE BLOCK 5P

**Drawing/Part No.:** 46375-01 **Current Rev.:**  
C