

# 460-XXX-SP SERIES

## Single-phase voltage monitor



### Description

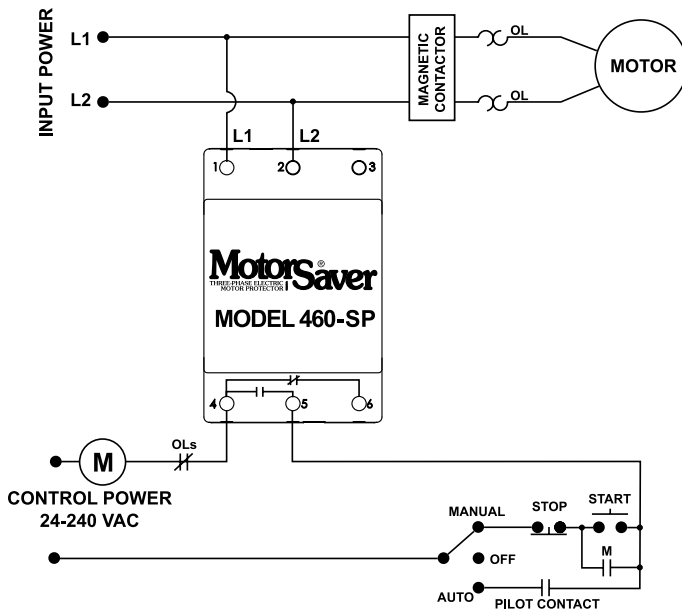
The 460-100-SP is used on 95–120 V ac, 50\*/60 Hz single-phase motors and the 460-200-SP is used on 190–240 V ac, 50\*/60 Hz single-phase motors to protect them from damaging high and low voltage conditions. An adjustment knob allows the user to set a 1–500 second restart delay. The variable restart delay is also a power-up delay and can be utilized to stagger-start motors on the same system.

A unique microcontroller-based, voltage-sensing circuit constantly monitors the voltage to detect harmful power line conditions. When a harmful condition is detected, the MotorSaver's output relay is deactivated after a specified trip delay. The output relay reactivates after power line conditions return to an acceptable level and a specified amount of time has elapsed (restart delay). The trip delay prevents nuisance tripping due to rapidly fluctuating power line conditions.

### Features & Benefits

| FEATURES   | BENEFITS   |
|--|--|
| <b>Proprietary microcontroller based circuitry</b> | Constant monitoring of voltage to detect harmful power line conditions, even before a motor starts |
| <b>Fixed trip delay 4 s</b>                        | Prevents nuisance tripping due to rapidly fluctuating power line conditions                        |
| <b>Adjustable restart delay (1–500s)</b>           | Allows staggered start up of multiple motors on the same system to prevent a low voltage condition |
| <b>Advanced LED indication</b>                     | Provides diagnostics which can be used for troubleshooting and to determine relay status           |
| <b>DIN rail or surface mountable</b>               | Allows flexibility for panel assembly  |

### Wiring Diagram



### Ordering Information

| MODEL      | LINE VOTAGE  |
|------------|--------------|
| 460-100-SP | 95–120 V ac  |
| 460-200-SP | 190–240 V ac |

## 460-XXX-SP SERIES

### Specifications

#### Input Characteristics

##### Line Voltage

**460-100-SP** 95–120 V ac  
**460-200-SP** 190–240 V ac

**Frequency** 50\*/60 Hz

#### Functional Characteristics

##### Low Voltage (% of setpoint):

**Trip** 90 % ±1 %  
**Reset** 93 % ±1 %

##### High Voltage (% of setpoint)

**Trip** 110 % ±1 %  
**Reset** 107 % ±1 %

##### Trip Delay Time

**Low or High Voltage** 4 seconds fixed

##### Restart Delay Time

**After a Fault** 1–500 seconds adjustable

**After a Complete Power Loss** 1–500 seconds adjustable

#### Output Characteristics

##### Output Contact Rating (1 Form C)

**Pilot Duty** 480 VA @ 240 V ac, B300

**General Purpose** 10 A @ 240 V ac

#### General Characteristics

##### Ambient Temperature Range

**Operating** -40° to 70°C (-40° to 158°F)

**Storage** -40° to 80°C (-40° to 176°F)

**Maximum Input Power** 6 W

**Class of Protection** IP20, NEMA 1 (finger safe)

**Relative Humidity** 10–95%, non-condensing per IEC 68-2-3

**Terminal Torque** 4.5 in.-lbs.

**Wire Type** Stranded or solid 12–20 AWG, one per terminal

#### Standards Passed

**Electrostatic Discharge (ESD)** IEC 61000-4-2, Level 3, 6 kV contact, 8 kV air

##### Radio Frequency Immunity,

**Radiated** 150 MHz, 10 V/m

**Fast Transient Burst** IEC 61000-4-4, Level 3, 3.5 kV input power and controls

##### Surge

##### IEC

IEC 61000-4-5, Level 3, 4 kV line-to-line;  
Level 4, 4 kV line-to-ground

##### ANSI/IEEE

C62.41 Surge and Ring Wave Compliance to a level of 6 kV line-to-line

##### Hi-potential Test

Meets UL 508 (2 x rated V +1000 V for 1 min)

##### Safety Marks

##### UL

UL 508 (File #E68520)

##### Enclosure

Polycarbonate

##### Dimensions

**H** 88.9 mm (3.5"); **W** 52.93 mm (2.084");

**D** 59.69 mm (2.35")

##### Weight

0.9 lb. (14.4 oz., 408.23 g)

##### Mounting Method

35 mm DIN rail or Surface Mount  
(#6 or #8 screws)

\*Note: 50 Hz will increase all delay timers by 20 %