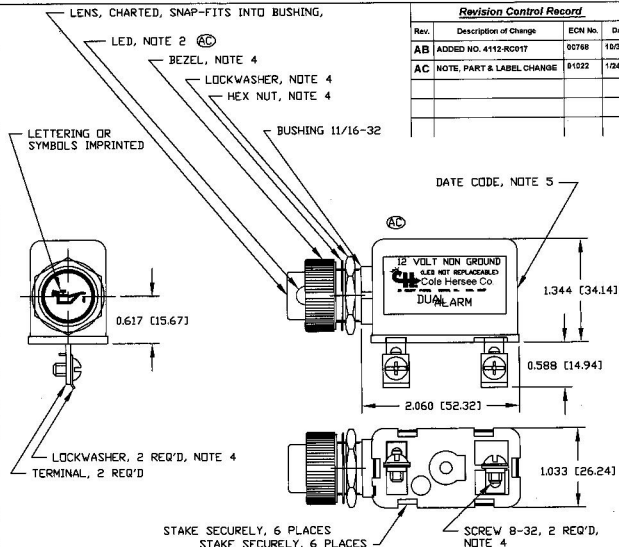


4112-RC017	RED	---	---	YES
^{AC} 4112-RC016	RED		WHITE	NO
4112-RC015	RED		WHITE	NO
4112-RC014	RED	CHECK ENGINE	BLACK	NO
4112-RC013	RED		WHITE	NO
4112-RC012	RED		WHITE	NO
4112-RC011	RED	OIL WATER	WHITE	NO
4112-RC010	RED	OIL	WHITE	NO
4112-RC009	RED	WATER	WHITE	NO
4112-RC007	RED		BLACK	NO
4112-RC006	RED	LOW AIR	BLACK	NO
4112-RC000	RED	---	---	NO
4112-AC001	AMBER	LOW OIL	BLACK	NO
4112-AC000	AMBER	---	---	NO
PART NO	LENS COLOR	IMPRINT	IMP COLOR	HARDWARE ASSEMBLED

12 VOLTS



- NOTES:
1. ALL STEEL PARTS PLATED
 2. LED NOT REMOVEABLE
 3. ALL DIMENSIONS REFERENCE
 4. PARTS MAY BE ASSEMBLED OR SUPPLIED IN BAG, SEE CHART
 5. MARK CASE AT RANDOM LOCATION AS TO WEEK & YEAR OF MANUFACTURE

Revision Control Record

Rev.	Description of Change	ECN No.	Date
AB	ADDED NO. 4112-RC017	00768	10/20/00
AC	NOTE, PART & LABEL CHANGE	81022	1/24/01

TOLERANCES - Unless otherwise specifically noted, the following are default tolerances:
 * Surface Dimensional Tolerances: $\pm .01$
 * Surface Dimensional Tolerances: $\pm .005$
 * Angular Dimensions: ± 1.0 Deg.
 * Holes: $\pm .005$ for equivalent English Dimensional Tolerance
 *** NOTE: All dimensions are Asia Compliant. ***

DIMENSIONAL DATA - All dimensions are expressed in inches unless noted otherwise. In brackets (inch) are expressed in millimeters.

2D/3D or 2D/3D - Non-Toleranced Reference Dimensions, where for identification purposes only.

QUALITY CONTROL INFORMATION - This Engineering Drawing, and the associated drawings herein, is proprietary to Cole Hersee Company and may not be disclosed, reproduced, or in any way transmitted or communicated to any other party without the express written consent of an authorized representative of Cole Hersee Company.

REVISION CONTROL - It is the responsibility of the individual using/interpreting this drawing to ensure that the correct design revision (as agreed with the technical staff of the Customer Company (Manufacturing)) is used. This is a **WIP-CONTROL** drawing unless otherwise specifically noted.

DO NOT SCALE - Dimensional variation may occur during printing/reproduction.

Key for Special Characteristics:

Critical Characteristics, relating to safety with Regulatory Compliance

Significant Characteristics relating to Process Control (SPC)

Critical Dimension relating to Form, Fit, Function as defined by Cole Hersee Company and/or the Customer

Parts that the identification of any Characteristics as being "Reorder" does not affect the requirement that ALL specified dimensions & tolerances must be met.

Reorderable N/A
 Engineer

**Cole Hersee Co.**

20 Old Colony Ave., South Boston, MA, 02127
 Phone: 917-255-2100 Web: www.colehersee.com

Description:

DUAL ALARM 12 VDrawing/
Part No.**4112**

Current Rev.

AC