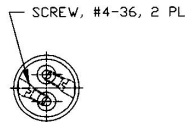
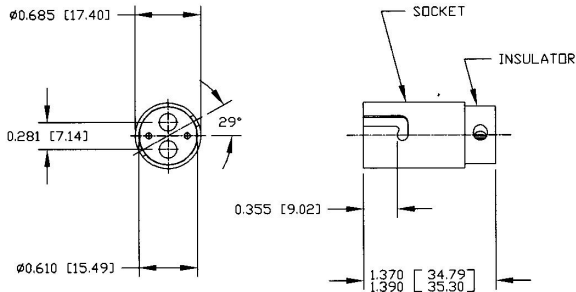


Revision Control Record

Rev.	Description of Change	ECN No.	Date
M	REVISED DRAWING	03716	12/29/03



NOTES:

1. ALL STEEL PARTS PLATED
2. ALL DIMENSIONS ARE REFERENCE ONLY UNLESS NOTED OTHERWISE
3. SOCKET ACCEPTS BA15d BASE BULB (DOUBLE CONTACT BAYONET BASE)

Tolerances: Unless otherwise specifically noted, the following are default tolerances:

- 2-place Decimal Dimensions $\pm .02$ "
- 3-place Decimal Dimensions $\pm .005$ "
- Angular Dimensions ± 1.0 Deg.
- Metric: Refer to equivalent English Dimension Tolerance
- >>> NOTE: All tolerances are Non-Cumulative. <<<

Dimensional Units: All dimensions are expressed in inches except those shown in brackets (xxx) are expressed in millimeters

"SPEC." or an Asterisk (*) is Non-Toleranced Reference Dimension, shown for clarificative purposes only.

Used On
or Ref:

Scale: **1:1**

Drawn **RG**
By:

Date **2/13/47**
Drawn:

Responsible **NA**
Engineer:

Pg. 1 of 1

Special Characteristics:

- Critical Characteristic, relating to Safety and/or Regulatory Compliance
- Significant Characteristic relating to Process Control (SPC)
- Key Characteristic relating to Form - Fit - Function as defined by Cole Hersee Company and/or the Customer

(Note that the identification of any Characteristics as being "Special" does not alter the requirement that ALL specified dimensions & tolerances must be met.)

DO NOT SCALE - Dimensional variation may occur during printing / reproduction.



Cole Hersee Co.

20 Old Colony Ave., South Boston, MA, 02127
Phn 617-268-2100 Web: www.colehersee.com

Description:

LAMP SOCKET, DC

Drawing /
Part No.:

2006

Current Rev.

M