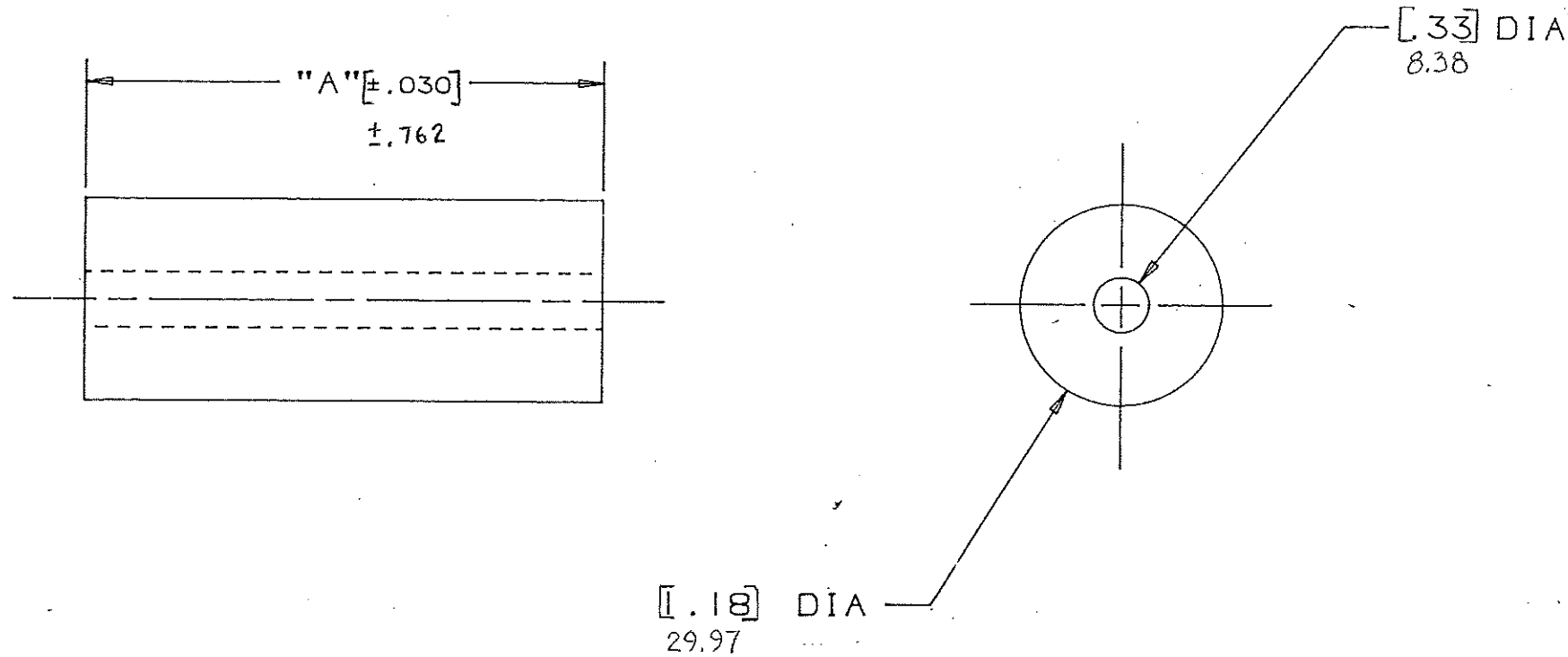


354517		[1.25]	31.75
354516		[1.00]	25.4
354515		[0.75]	19.05
L/F PART N ^o		"A" DIM.	METRIC



CERTIFICATION OF
 COUNTRY OF ORIGIN
 REQUIRED

COPIES TO	18	MAT'L. SPEC.	POLYETHYLENE	Color: Black
	9			
10	19	FINISH	SCALE	SUPER. DR.
12	20			
13	21	DR. <i>Ges. Apr. 7, 94</i>	CHK. <i>Ges.</i>	RAW STK. WT. LBS./M
14	22	APPD. <i>A. Hobbles</i>	DATE <i>10-11-94</i>	
15	23	TOLERANCE UNLESS OTHERWISE SPECIFIED		
16	24	TWO PLACE DEC. ± .50mm [$\pm .020$] FRACTION ±		
17	25	THREE PLACE DEC. ± .25mm [$\pm .010$] ANGULAR ±		
18	26	TITLE		
19	27	Mounting Stand OFF		
20	28	DRWG. # 03540515Z		
21	29	THRU		
22	30	D- 03540517Z		

LTR	REVISION	CHK.	APP.
A	06534 - RELEASED October 10, 94	<i>Ges.</i>	<i>AB</i>
B	36982C - ADD METRIC DIMS 7-19-95	<i>G</i>	<i>G</i>
C	37055D - CHG TITLE 8-19-95	<i>JCU</i>	<i>G</i>
D	000807ER - RE-INSTATE 10/09/09		

DRAWING NO.

NOTE: ALL DIMENSIONS ARE IN MILLIMETERS.
 ENGLISH DIMENSIONS IN [].

UNLESS OTHERWISE SPECIFIED, ALL DIMENSIONS ARE TO BE HIDDEN BY SUPPLIER AND
 REFERRED TO DRAWING.