

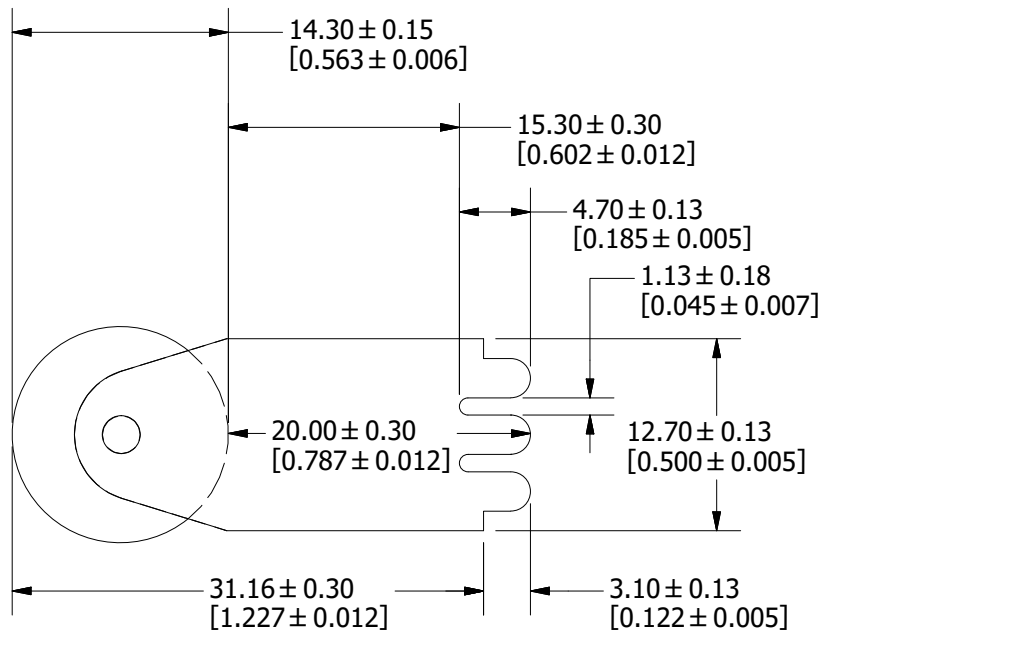
| REVISION |          |                                     |
|----------|----------|-------------------------------------|
| REV      | DATE     | DESCRIPTION                         |
| A        | 4/17/18  | 519174GCP - RELEASE MRY             |
| B        | 11/19/20 | 523066ECP/B - UPDATE DIMENSIONS MRY |

**NOTE:**  
1. MEASUREMENT TAKEN AT END OF TERMINALS.

**LEAD FREE SOLDERING PROFILE:**

PRE-HEAT: ABOVE 130°C FOR 75 SECONDS MAX  
 REFLOW: 278°C FOR 8 SECONDS MAX  
 TIME: 250 SECONDS MAX.  
 MAX TEMP: 280°C

**PAD LAYOUT**

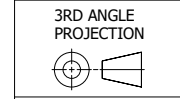


|     |  |
|-----|--|
| ●   | DENOTES CRITICAL CHARACTERISTICS.  |
| CPK | DENOTES CPK DIMENSIONS, -MINIMUM CPK VALUE   |
| ⊠   | DENOTES A CHARACTERISTIC THAT PROVIDES AN INDICATION OF PROCESS PERFORMANCE. PROCEDURE FOR MEASUREMENT AND TRACKING TO BE DEFINED IN LITTELFUSE INSPECTION INSTRUCTIONS. |
| CP  | DENOTES CP DIMENSIONS, -MINIMUM CP VALUE MUST BE WITHIN THE DIMENSIONAL LIMITATIONS SHOWN ON DRAWING AND INITIALLY LOCATED TO ALLOW FOR MAXIMUM TOOL LIFE.               |

**A**

|           |               |           |                            |
|-----------|---------------|-----------|----------------------------|
| MATL SPEC |               | FINISH    |                            |
| DRW myork | DATE 4/4/2018 | SCALE NTS | FINISH GOOD WT GRAMS/PIECE |

UNLESS OTHERWISE SPECIFIED, DIMENSIONS ARE IN MILLIMETERS, DIMENSIONS IN BRACKETS [ ] ARE INCHES DIMENSIONING AND DO NOT INCLUDE PLATING. TOLERANCING TO BE INTERPRETED IN ACCORDANCE WITH ANSI Y14.5M-1994



|              |                               |
|--------------|-------------------------------|
| <b>TITLE</b> | TLS-SLSA OUTLINE & PAD LAYOUT |
|--------------|-------------------------------|

|                             |          |                |              |
|-----------------------------|----------|----------------|--------------|
| <br>CHICAGO, ILLINOIS 60631 | REVISION | DRWG NO.       | SHEET 1 OF 1 |
|                             | B        | OL-0TLS000SLSA |              |