

PART NUMBER

OLD4553ZX

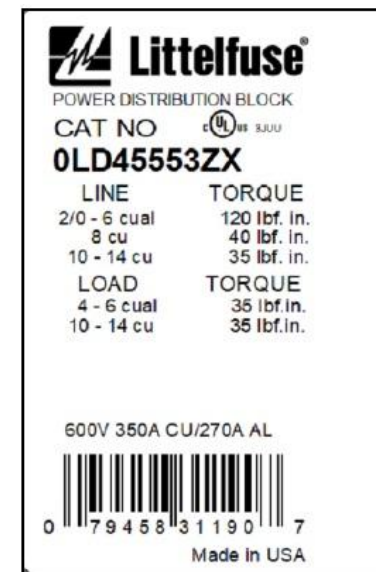
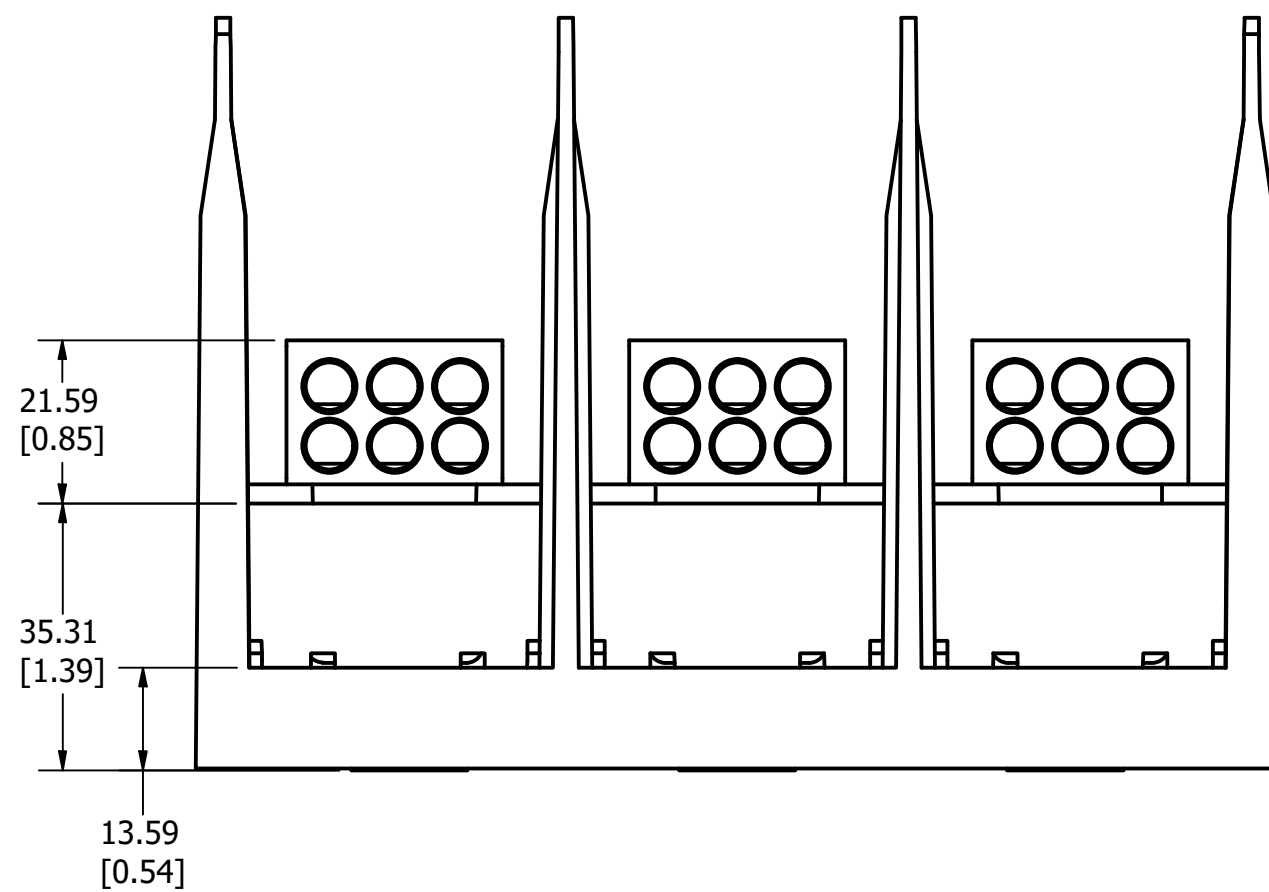
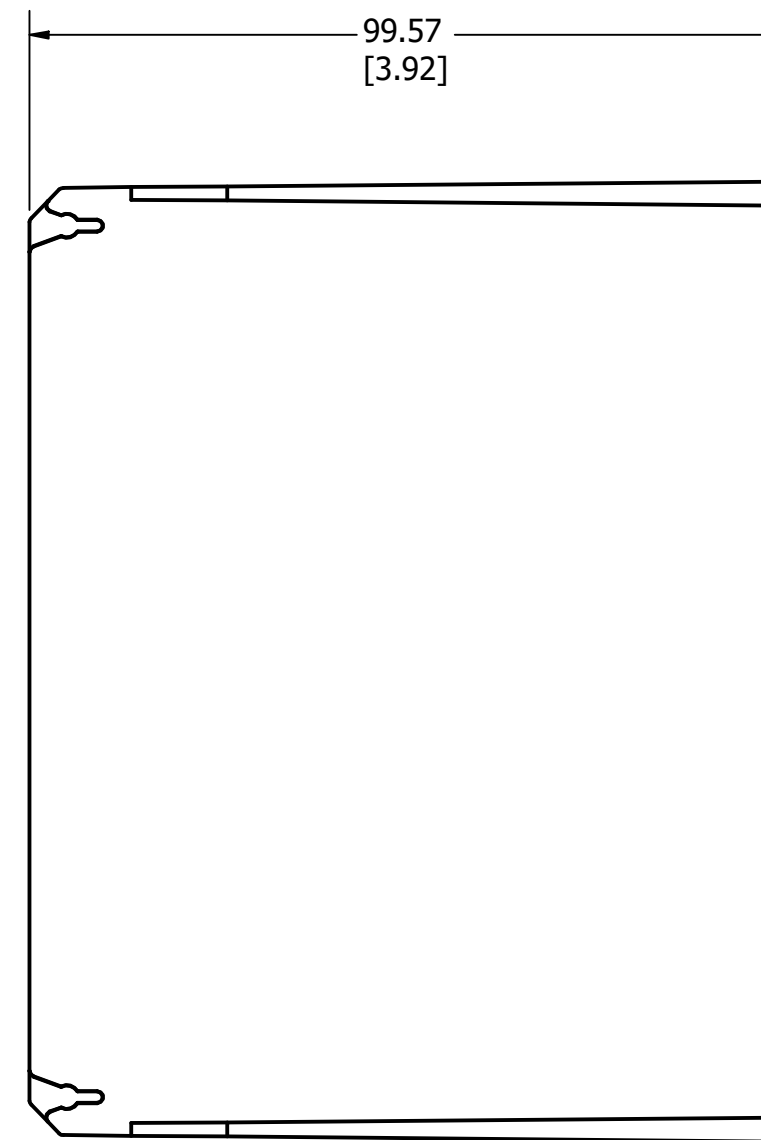
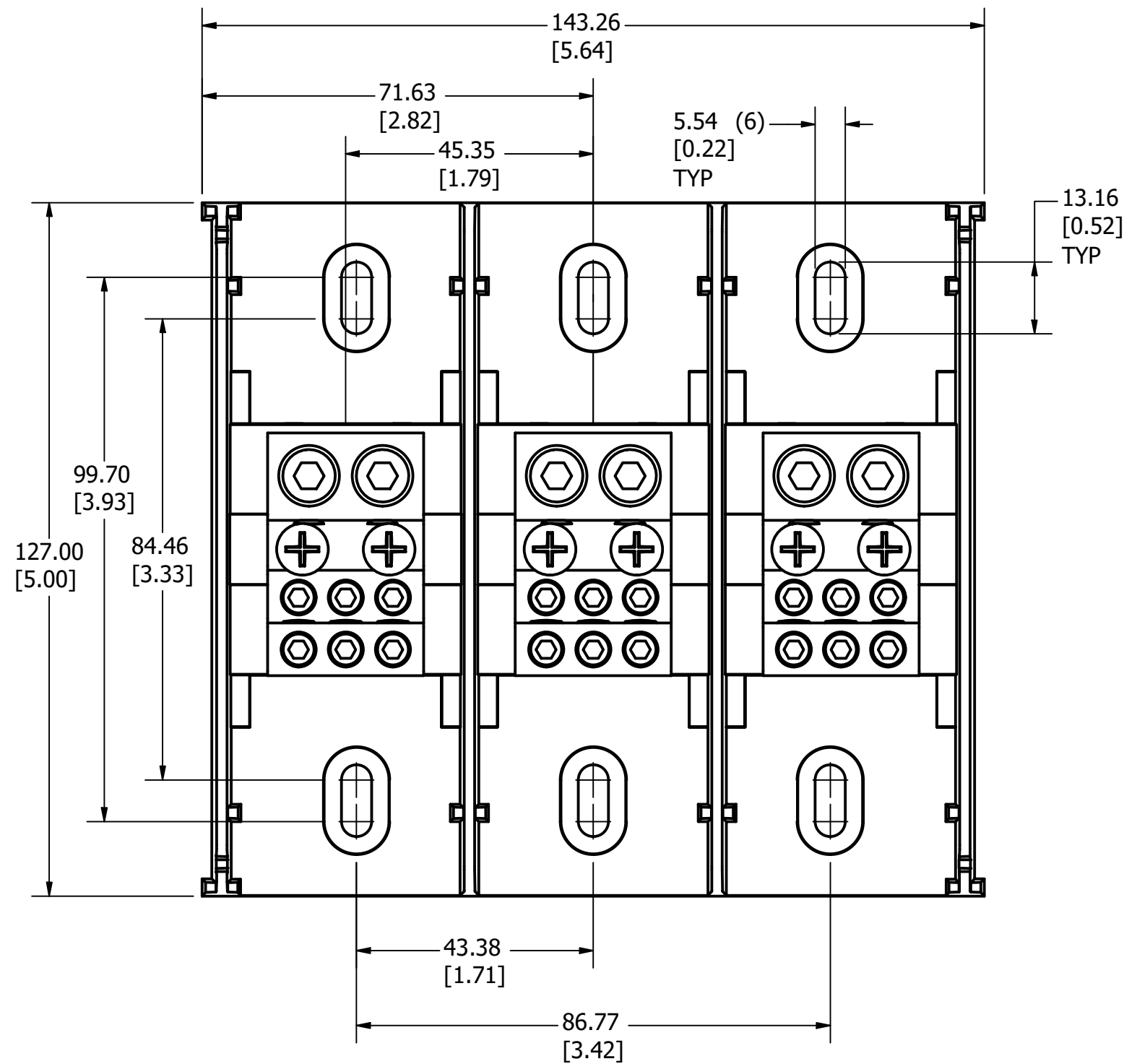
| REVISION | | DESCRIPTION |
|----------|---------|------------------------------------|
| REV | DATE | |
| A | 3/11/24 | 527585GCP - RELEASE PER EM3406 MRY |

NOTES:

1. AGENCY INFORMATION: cULus - UL LISTED TO UL 1953
UL EVALUATED TO CSA 22.2 NO. 158
2. MATERIALS: INSULATOR BASE: HIGH IMPACT THERMOPLASTIC
FLAMMABILITY RATING UL94V0
TEMP RATING: -40°C TO 125°C (UL RTI)
CONNECTOR: ALUMINUM, TIN PLATED
LINE TERMINAL SCREWS: ALUMINUM, TIN PLATED
LOAD TERMINAL SCREWS: ALUMINUM, NICKEL PLATED
CONNECTOR MOUNTING SCREWS: STEEL, ZINC PLATED
3. TERMINATION: LINE: COPPER STRANDED, 2/0 - #14 AWG
SOLID COPPER, #10 - 14 AWG
ALUMINUM, #2 - 6 AWG
LOAD: COPPER STRANDED, #4 - 14 AWG
SOLID COPPER, #10 - 14 AWG
ALUMINUM, #2 - 6 AWG
4. MAXIMUM AMP RATING PER POLE: 350A
BASED ON NEC WIRE RATING CODE, 75°C WIRE
PROVIDES SPACING FOR USE IN FEEDER CIRCUITS
AT 251-600V PER UL508A
5. TORQUE: LINE: 2/0 - #6: 13.6 N-m (120 lbf-in)
#8: 4.5 N-m (40 lbf-in)
#10 - 14: 4 N-m (35 lbf-in)
LOAD: #4 - 14: 4 N-m (35 lbf-in)
6. MOUNTING: USE #10 FASTENER. TORQUE NOT TO EXCEED
3.4 N-m (30 lbf-in).

TOLERANCE (UNLESS OTHERWISE SPECIFIED):

- 1 PLACE ± 2.5mm [0.10]
- 2 PLACE ± 0.76mm [0.03]
- 3 PLACE ± 0.381mm [0.015]



| CLASS | LINE | LOAD | Over-Current Protection Fuse Required | | | | | | SCCR/RMS Sym. Amps 600V Max |
|-------|--------|------|---------------------------------------|-----|-----|-----|----|----|-----------------------------|
| | | | J | T | RK1 | RK5 | G | CC | |
| B-C | 2/0-2 | 4-8 | 400 | 400 | 400 | 100 | 80 | 30 | 100,000 |
| | 2/0-6 | 4-10 | 200 | 200 | 200 | 100 | 80 | 30 | 100,000 |
| G,H,I | 1-6 | 8-10 | 150 | 150 | 100 | 100 | 80 | 30 | 100,000 |
| | 2/0-14 | 4-14 | None | | | | | | 10,000 |

| NO | COMPONENT NO | DESCRIPTION | QTY/M | U/M |
|---|---------------|--|----------------------------|--------------|
| BILL OF MATERIAL | | | | |
| <S> | | CRITICAL CHARACTERISTIC FOR PART SAFETY/COMPLIANCE | | |
| ● | | DENOTES CRITICAL CHARACTERISTICS. | | |
| CPK | | DENOTES CPK DIMENSIONS, -MINIMUM CPK VALUE | | |
| (ST) | | DENOTES A CHARACTERISTIC THAT PROVIDES AN INDICATION OF PROCESS PERFORMANCE. PROCEDURE FOR MEASUREMENT AND TRACKING TO BE DEFINED IN LITTELFUSE INSPECTION INSTRUCTIONS. | | |
| CP | | DENOTES CP DIMENSIONS, -MINIMUM CP VALUE MUST BE WITHIN THE DIMENSIONAL LIMITATIONS SHOWN ON DRAWING AND INITIALLY LOCATED TO ALLOW FOR MAXIMUM TOOL LIFE. | | C |
| MATL SPEC | | FINISH | | |
| DRW myork | DATE 3/2/2023 | SCALE NTS | FINISH GOOD WT GRAMS/PIECE | |
| UNLESS OTHERWISE SPECIFIED, DIMENSIONS ARE IN MILLIMETERS, DIMENSIONS IN BRACKETS [] ARE INCHES DIMENSIONING AND DO NOT INCLUDE PLATING. TOLERANCING TO BE INTERPRETED IN ACCORDANCE WITH ANSI Y14.5M-1994 | | | | |
| 3RD ANGLE PROJECTION | | | | |
| TITLE DISTRIBUTION BLOCK 600V, 350A, 3 POLE OUTLINE | | | | |
| Littelfuse CHICAGO, ILLINOIS 60631 | | REVISION A | DRWG NO. OL-LD4553 | SHEET 1 OF 1 |