

MM IN.  
 25 010  
 317 125  
 19.43 765  
 20.57 810  
 22.86 900  
 48.51 1910  
 36.57 1.440  
 61.97 2.440

M-95502

APPLICABLE SAE  
 STANDARD OR  
 RECOMMENDED PRACTICE  
 SAE J259

LOCK & 2 KEYS

FACE NUT, ALUMINUM

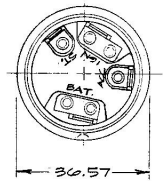
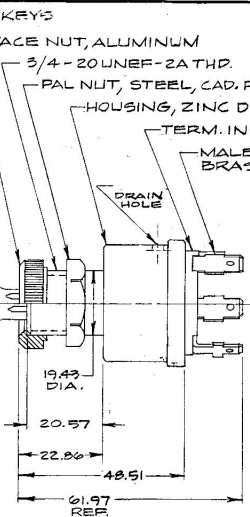
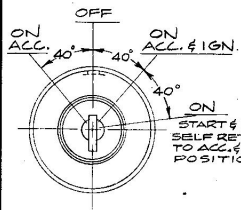
3/4 - 20 UNEF - 2A THD.

PAL NUT, STEEL, CAD. PLT.

HOUSING, ZINC DIE CAST

TERM. INSUL., BAKELITE

MALE BLADE TERMINALS,  
 BRASS



Confidential property of Cole Hersee

METRIC

NOTE:  
 ADAPTER FACE NUT PERMITS ASSEMBLY  
 OF SWITCH TO 3/4 & 7/8 DIA. PANEL HOLES.

DO NOT SCALE

LET	WAS	DATE	BY	LET	WAS	DATE	BY	MATERIAL	DRAWN	CHECKED	APPR'D.	SCALE	DATE DRAWN
								#	EA			1:1	5-11-62
								FINISH	<b>COLE-HERSEE COMPANY</b> BOSTON, MASS. 02127, U.S.A.				DATE BLUEPRINT
							#	TOLERANCES					<b>4 POSITION</b> <b>IGN. &amp; START SW.</b>
								FRACTIONAL ±					
								DECIMAL ±					

COLE-HERSEE CO.