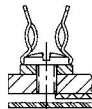
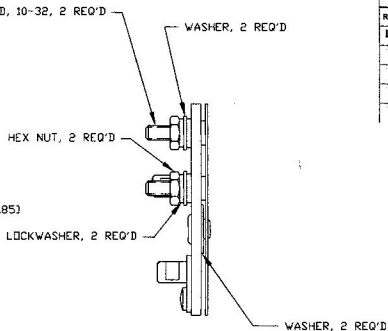
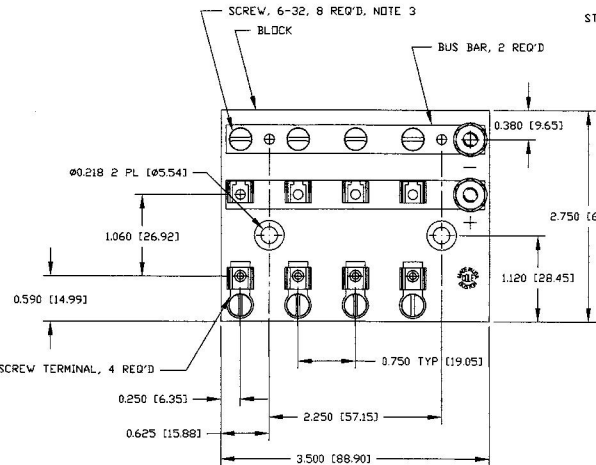


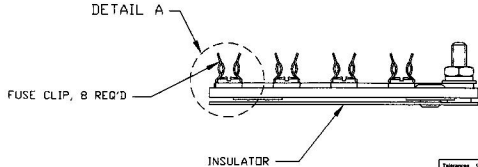
**Revision Control Record**

Rev.	Description of Change	ECN No.	Date
L	ADDED + & -	01029	6/6/01



DETAIL A  
 SCALE 2:1

- NOTES:  
 1. ALL STEEL PARTS PLATED  
 2. RATING: 20 AMPS PER CIRCUIT, 50 AMPS MAX  
 3. PARTS MAY BE ASSEMBLED OR SHIPPED LOOSE



**Tolerances:** Unless otherwise specifically noted, the following are standard tolerances:  
 • 1 place Decimal Dimensions: ±.01"  
 • 2 place Decimal Dimensions: ±.005"  
 • Angular Dimensions: ±1/2 Deg.  
 • Holes: ±.004 to maximum English Dimension Tolerance  
 \*\*\* NOTE: All dimensions are Non-Cumulative. \*\*\*

**Dimensional Units:** All dimensions are expressed in inches unless shown in brackets [ ] are expressed in millimeters.

**UNIT \* as an Abbrev. (U) = Unit-Tolerance of Reference Dimension, as shown for clarification purposes only.**

Drawn By: **Scale: 1:1**

**DESIGNER'S RESPONSIBILITY:** This Engineering Drawing, and the information contained herein, is property of Coile Hersee Company and may not be disclosed, reproduced, or in any other way fabricated or constructed to any other party without the express written consent of an authorized representative of Coile Hersee Company.

**DESIGNER'S CONTROL:** It is the responsibility of the individual using INFORMATION ONLY Working to ensure that the initial design includes legal approval with the revision level of the Contract Document (Master Drawing). This is a NON-CONTROLLED DOCUMENT unless otherwise specifically noted.

**DO NOT SCALE:** Dimensional notation may occur during printing/ reproduction.

Drawn By: **DPS** Date: **8/22/97**

**Rev for Special Characteristics:**

- ⊕ Critical Characteristics, relating to Safety and/or Regulatory Compliance
- Ⓜ Significant Characteristics (relating to Process Control)
- ⊖ Control Dimension relating to Form - Fit - Function as defined by Coile Hersee Company and/or the Customer.

Note that the identification of any Characteristics as being "Special" does not alter the requirement that ALL specified dimensions & tolerances must be met.

Responsible: **N/A** Pg. 1 of 1

**Coile Hersee Co.**  
 30 Old Colony Ave., South Boston, MA, 02127  
 Phone: 617-288-2100 Fax: www.coilehersee.com

Description: **FUSE BLOCK, 4 POL**

Drawing / Part No.: **M-674**

Current Rev.: **L**