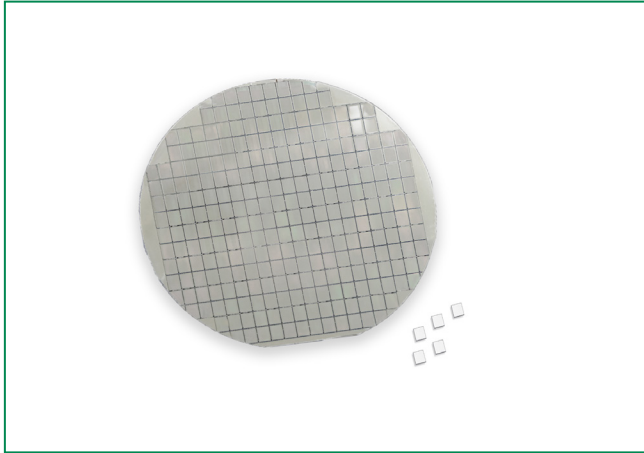


SZW200 / SZD200 Series

5 kW 200 Mil Planar TVS Wafer / Die for Automotive and High Reliability



Description

The new SZW200/SZD200 wafer/die is designed for automotive and high reliability applications of vehicles (ISO7637-2 / ISO16750) and avionics (DO-160), to provide 5kW (10x1000 μs) power rating over voltage protection.

Features

- 5kWTVS in wafer or die form
- Double sides Ti / Ni / Ag metalization
- Manufactured by Automotive / High Reliability production line with good traceability

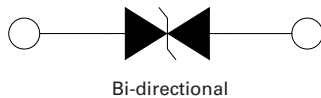
Absolute Maximum Ratings

Symbol	Parameter	Condition
T_J	Operating Temperature	150 °C
T_{STOR}	Storage Temperature	Vacuum seal: 25 °C ± 5 °C, ≤ 75 % RH, store in nitrogen gas holder for six months. Notice: Need to finish assembly and packaging within 5 days (120 hours) after open the packing.

Applications

- Power Train and other high power protection in Electrical Vehicles
- Airplane Power Train, and other DO-160 protections

Functional Diagram



Electrical Characteristics ($T_{OP}=25\text{ °C}$)

Part Number (Wafer)	Part Number (Bare Die)	Reverse Stand off Voltage V_R (Volts)	Breakdown Voltage V_{BR} (Volts) @ I_{BR}		Breakdown Current I_{BR} (mA)	Maximum standby current I_D @ V_R (μA)	Peak Pulse Current I_{PP} (10/1000μs) (A)	Maximum Clamping Voltage V_C @ I_{PP} (10/1000μs) (V)	Peak Pulse Power P_{PPM} (W)	Typical Temperature coefficient of V_{BR} (%/C)
			MIN	MAX						
SZW200PTT024BB	SZD200PTT024B	24	26.80	29.70	1	1	128.30	39.0	5000	0.1
SZW200PTT026BB	SZD200PTT026B	26	28.90	31.90	1	1	119.00	42.1	5000	0.1
SZW200PTT028BB	SZD200PTT028B	28	31.30	34.59	1	1	110.50	45.3	5000	0.1
SZW200PTT030BB	SZD200PTT030B	30	33.50	37.10	1	1	102.80	48.7	5000	0.1
SZW200PTT033BB	SZD200PTT033B	33	36.90	40.70	1	1	93.60	53.5	5000	0.1
SZW200PTT036BB	SZD200PTT036B	36	40.30	44.50	1	1	85.60	58.5	5000	0.1

Note: Parameter is guaranteed by package characterization

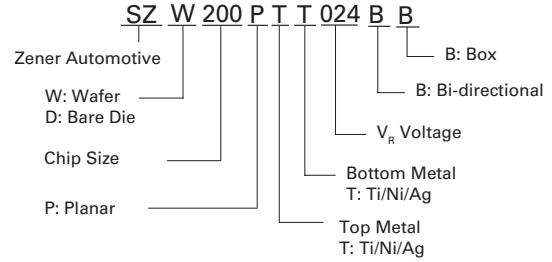
SZW200 / SZD200 Series

5 kW 200 Mil Planar TVS Wafer / Die for Automotive and High Reliability

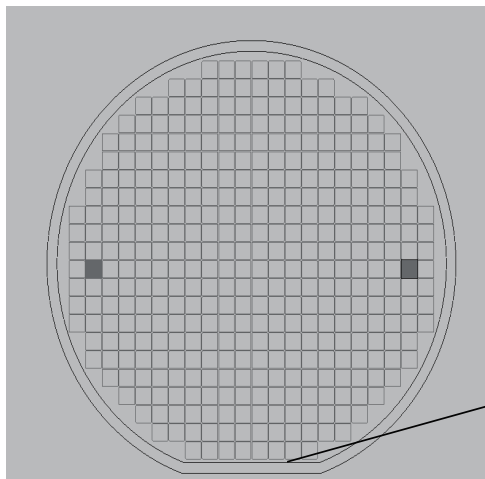
Packaging

Component Package	Packaging Option
Wafer	Box

Part Numbering



Physical Dimensions- Wafer



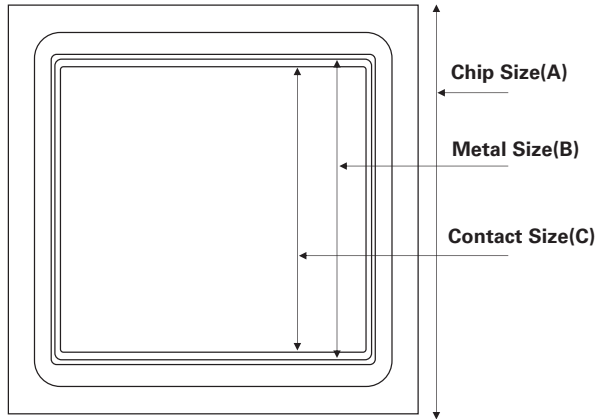
Effective area
Invalid area

5" wafer size	125.0 ± 0.2 mm
Primary Flat length	42.5 ± 2.5 mm

SZW200 / SZD200 Series

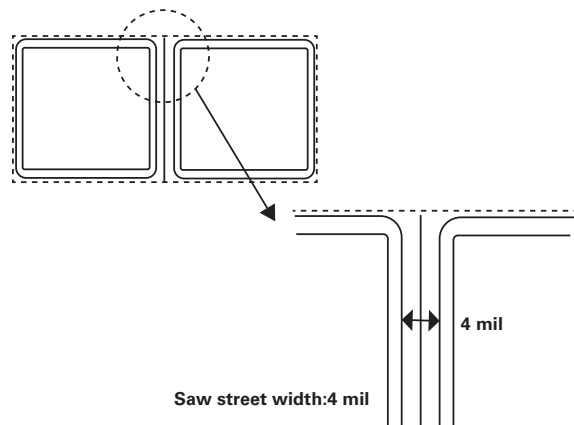
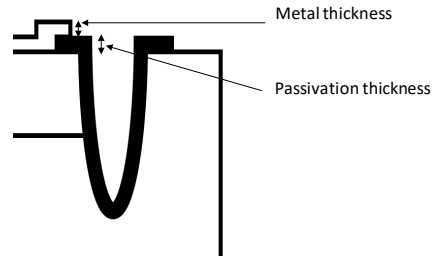
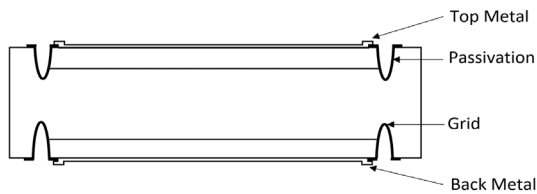
5 kW 200 Mil Planar TVS Wafer / Die for Automotive and High Reliability

Physical Dimensions - Bare Die



Die size (Ax, Ay)	200 x 200 mil
Metal size (Bx, By)	186 x 186 mil
Contact size (Cx, Cy)	183 x 183 mil
Grid depth	27 μm
Die thickness	300 μm
Passivation thickness	1.9 μm
Top metalization	Ti / Ni / Ag
Top metal thickness	1.1 μm
Back metalization	Ti / Ni / Ag
Back metal thickness	1.1 μm

Note: Parameter is guaranteed by package characterization



Packing Specification

For detail packing size or specification, please contact with Littelfuse®.

Disclaimer Notice - Information furnished is believed to be accurate and reliable. However, users should independently evaluate the suitability of and test each product selected for their own applications. Littelfuse products are not designed for, and may not be used in, all applications.

Read complete Disclaimer Notice at <http://www.littelfuse.com/disclaimer-electronics>.