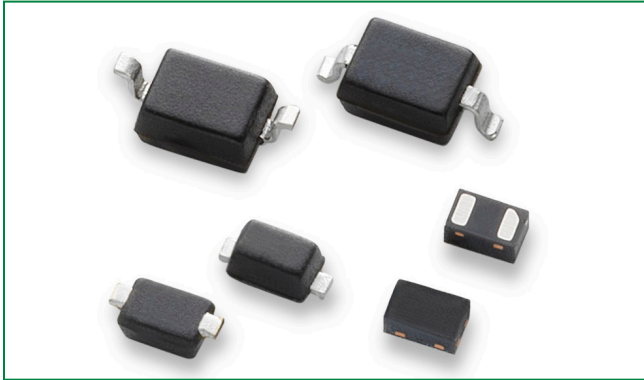


AQ24COM-01 Series

24 V Bidirectional 250 W TVS Diode Array Discrete, General Purpose ESD Protection

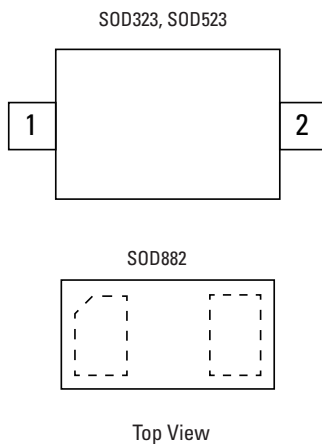


Description

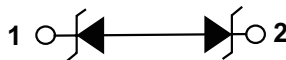
The AQ24COM-01 series bidirectional TVS is fabricated in a proprietary silicon avalanche technology. These diodes provide a high ESD (electrostatic discharge) protection level for electronic equipment.

The AQ24COM-01 series TVS can safely absorb repetitive ESD strikes of ± 30 kV (contact and air discharge as defined in IEC 61000-4-2) without any performance degradation. In addition, it can safely dissipate a 5 A 8/20 μ s surge event as defined in IEC 61000-4-5, 2nd edition.

Pinout



Functional Block Diagram



Features

- ESD, IEC 61000-4-2, ± 30 kV contact/air
- ESD, ISO 10605, 330 pF 330 Ω , ± 30 kV contact/air
- EFT, IEC 61000-4-4, 40 A (5/50 ns)
- Maximum surge tolerance, IEC 61000-4-5 2nd edition, 5 A (8/20 μ s)
- Halogen free, lead free and RoHS compliant
- Moisture sensitivity level (MSL-1)
- AEC-Q101 qualified and PPAP capable

Applications

- Automotive Applications
- ADAS Control Units
- Body Control Units
- CAN/LIN Bus
- Electronic Control Units
- Factory Automation
- Lighting Control (DALI)
- PowerTrain Control Units

Life Support Note:

Not Intended for Use in Life Support or Life Saving Applications

The products shown herein are not designed for use in life sustaining or life saving applications unless otherwise expressly indicated.

AQ24COM-01 Series

24 V Bidirectional 250 W TVS Diode Array Discrete, General Purpose ESD Protection

Absolute Maximum Ratings

Symbol	Parameter	Value	Units
P_{PK}	Peak Pulse Power ($t_p = 8/20 \mu s$)	250	W
I_{PP}	Peak Current ($t_p = 8/20 \mu s$)	5.0	A
T_{OP}	Operating Temperature	-40 to 150	°C
T_{STOR}	Storage Temperature	-55 to 150	°C

CAUTION: Stresses above those listed in "Absolute Maximum Ratings" may cause permanent damage to the component. This is a stress only rating and operation of the component at these or any other conditions above those indicated in the operational sections of this specification is not implied.

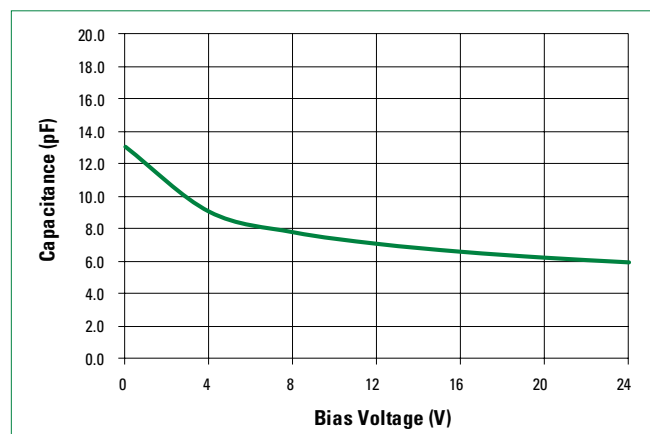
Electrical Characteristics ($T_{OP} = 25 \text{ }^\circ\text{C}$)

Parameter	Symbol	Test Conditions	Min	Typ	Max	Units
Reverse Standoff Voltage	V_{RWM}				24	V
Breakdown Voltage	V_{BR}	$I_R = 1 \text{ mA}$, I/O to GND	26		33	V
Reverse Leakage Current	I_{LEAK}	$V_R = 24 \text{ V}$, I/O to GND		1	50	nA
Clamp Voltage ¹	V_C	$I_{PP} = 1 \text{ A}$, $t_p = 8/20 \mu s$, I/O to GND		38.5		V
		$I_{PP} = 5 \text{ A}$, $t_p = 8/20 \mu s$, I/O to GND		50		V
Dynamic Resistance ²	R_{DYN}	TLP, $t_p = 100 \text{ ns}$, I/O to GND		0.42		Ω
ESD Withstand Voltage ^{1,3}	V_{ESD}	IEC 61000-4-2 (Contact discharge)	± 30			kV
		IEC 61000-4-2 (Air discharge)	± 30			kV
		ISO10605 (Contact discharge)	± 30			kV
		ISO10605 (Air discharge)	± 30			kV
Diode Capacitance ¹	$C_{I/O-GND}$	Reverse Bias = 0 V, $f = 1 \text{ MHz}$; I/O to GND		13		pF

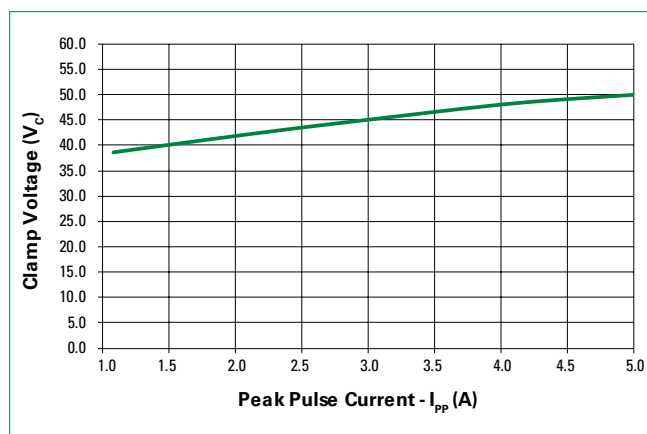
Notes:

- Parameter is guaranteed by design and/or component characterization.
- Transmission Line Pulse (TLP) with 100ns width, 0.2 ns rise time, and average window $t_1 = 70 \text{ ns}$ to $t_2 = 90 \text{ ns}$.
- Device stressed with ten non-repetitive ESD pulses.

Capacitance vs. Reverse Bias



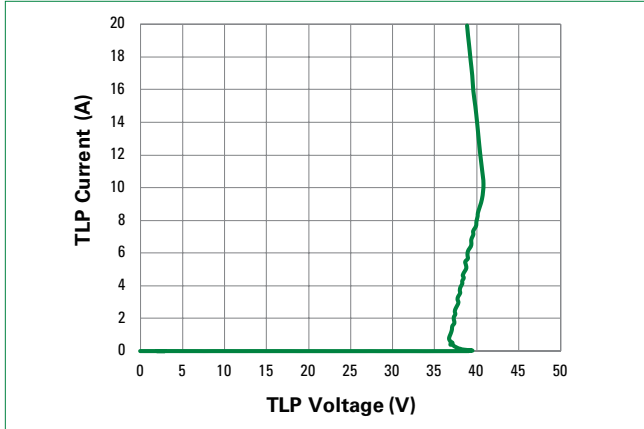
Clamping Voltage vs I_{PP}



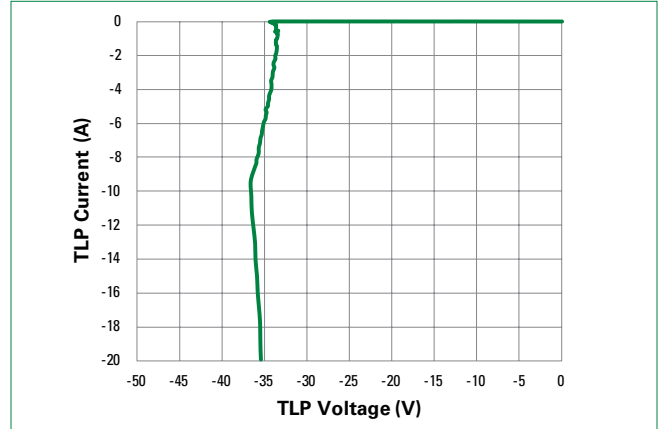
AQ24COM-01 Series

24 V Bidirectional 250 W TVS Diode Array Discrete, General Purpose ESD Protection

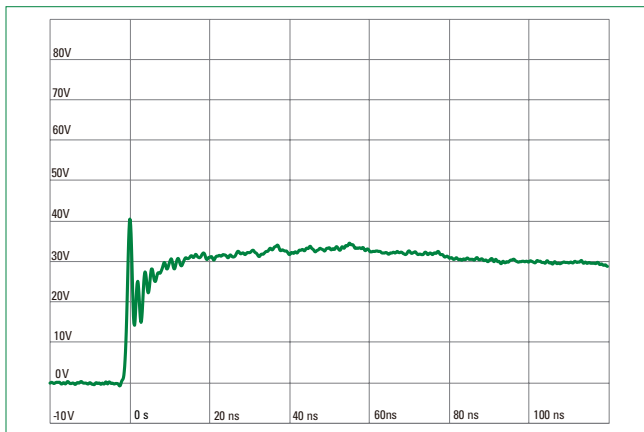
Positive Transmission Line Pulsing (TLP) Plot



Negative Transmission Line Pulsing (TLP) Plot



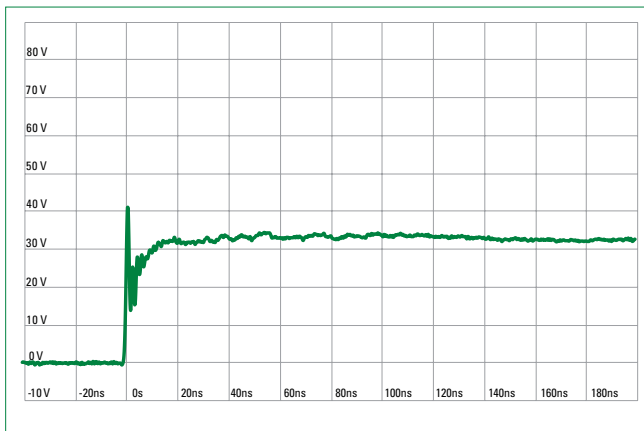
IEC 61000-4-2 +8 kV Contact ESD Clamping Voltage



IEC 61000-4-2 -8 kV Contact ESD Clamping Voltage



ISO10605 Contact Discharge Plot at +8 kV



ISO10605 Contact Discharge Plot at -8 kV

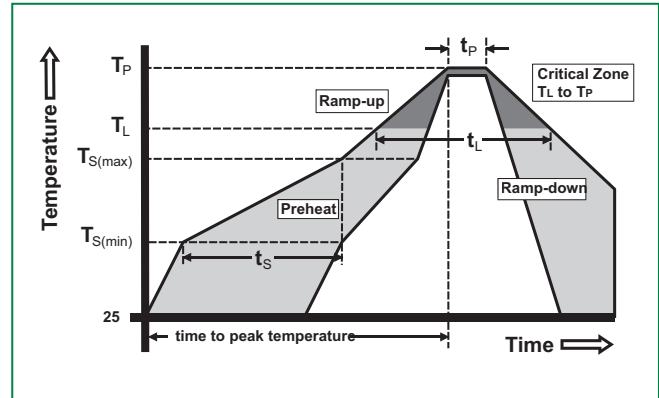


AQ24COM-01 Series

24 V Bidirectional 250 W TVS Diode Array Discrete, General Purpose ESD Protection

Soldering Parameters

Reflow condition		Pb – Free assembly
Pre Heat	- Temperature min ($T_{s(min)}$)	150 °C
	- Temperature max ($T_{s(max)}$)	200 °C
	- Time (min to max) (t_s)	60 – 120 secs
Average ramp up rate (Liquidus) temp (T_L) to peak		3 °C/second max
$T_{s(max)}$ to T_L - Ramp-up rate		3 °C/second max
Reflow	- Temperature (T_L) (Liquidus)	217 °C
	- Temperature (t_L)	60 – 150 seconds
Peak temperature (T_p)		260 ^{+0/-5} °C
Time within 5°C of actual peak temperature (t_p)		30 seconds
Ramp-down rate		6 °C/second max
Time 25°C to peak temperature (T_p)		8 minutes max
Do not exceed		260 °C



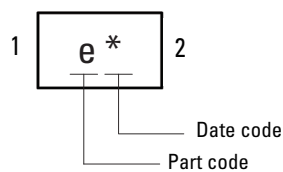
Ordering Information

Part number	Package	Min. order qty.
AQ24COM-01ETG	SOD882	10,000
AQ24COM-01FTG	SOD323	3,000
AQ24COM-01LTG	SOD523	5,000

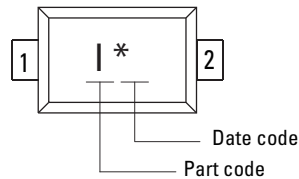
Product Characteristics

Lead plating	Matte tin
Lead material	Copper alloy
Body material	Molded compound
Flammability	UL recognized compound meeting flammability rating V-0

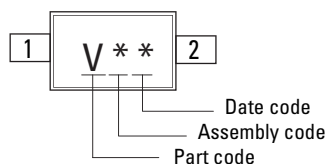
Part Marking System



AQ24COM-01ETG

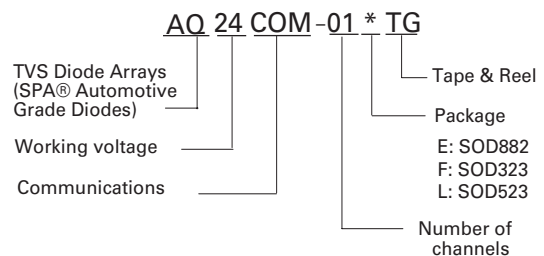


AQ24COM-01LTG



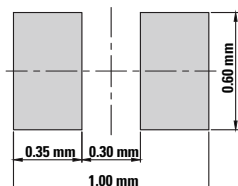
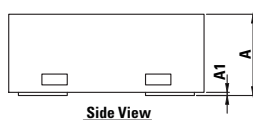
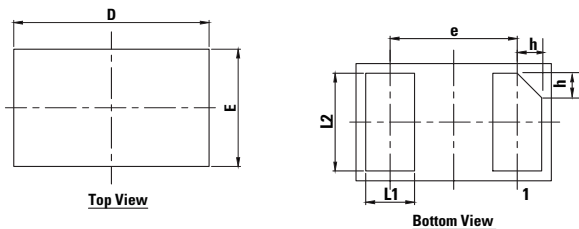
AQ24COM-01FTG

Part Numbering System



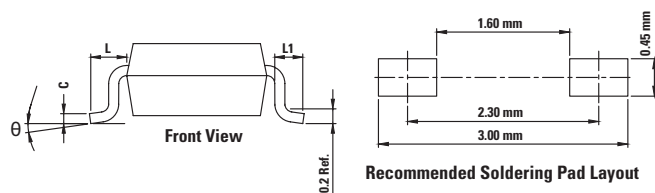
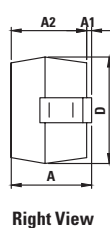
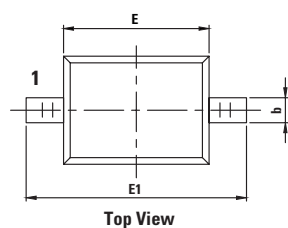
AQ24COM-01 Series

24 V Bidirectional 250 W TVS Diode Array Discrete, General Purpose ESD Protection

Package Dimensions — SOD882

Recommended Soldering Pad Layout

Symbol	SOD882					
	Millimeters			Inches		
	Min	Typ	Max	Min	Typ	Max
A	0.40	0.50	0.55	0.016	0.020	0.022
A1	0.00	0.02	0.05	0.000	0.001	0.002
L1	0.20	0.25	0.30	0.008	0.010	0.012
L2	0.45	0.50	0.55	0.018	0.020	0.022
D	0.95	1.00	1.05	0.037	0.039	0.041
E	0.55	0.60	0.65	0.022	0.024	0.026
e	0.65 BSC			0.026 BSC		
h	0.07	0.12	0.17	0.003	0.005	0.007

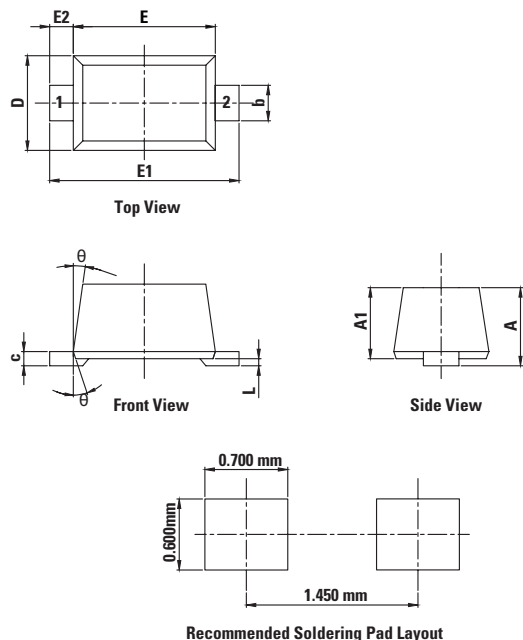
Package Dimensions — SOD323

Recommended Soldering Pad Layout

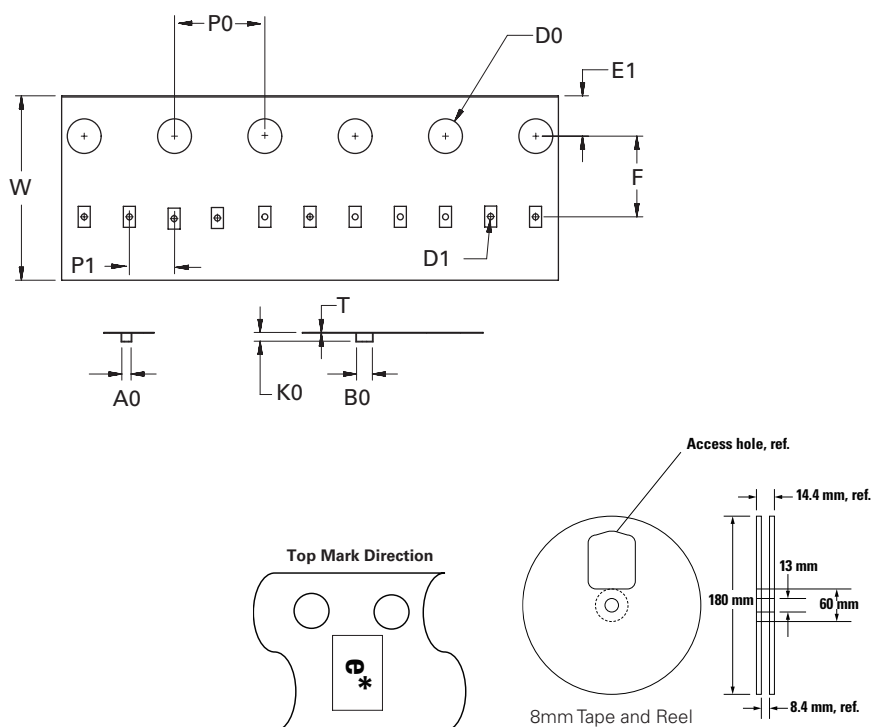
Symbol	Millimeters		Inches	
	Min	Max	Min	Max
A	0.80	1.00	0.031	0.039
A1	0.00	0.10	0.000	0.004
A2	0.80	0.90	0.031	0.035
b	0.25	0.35	0.010	0.014
c	0.08	0.15	0.003	0.006
D	1.20	1.40	0.047	0.055
E	1.60	1.80	0.063	0.071
E1	2.50	2.75	0.098	0.108
L1	0.25	0.40	0.010	0.016
L	0.475 Ref		0.019 Ref	
θ	0°	8°	7°	8°

AQ24COM-01 Series

24 V Bidirectional 250 W TVS Diode Array Discrete, General Purpose ESD Protection

Package Dimensions — SOD523

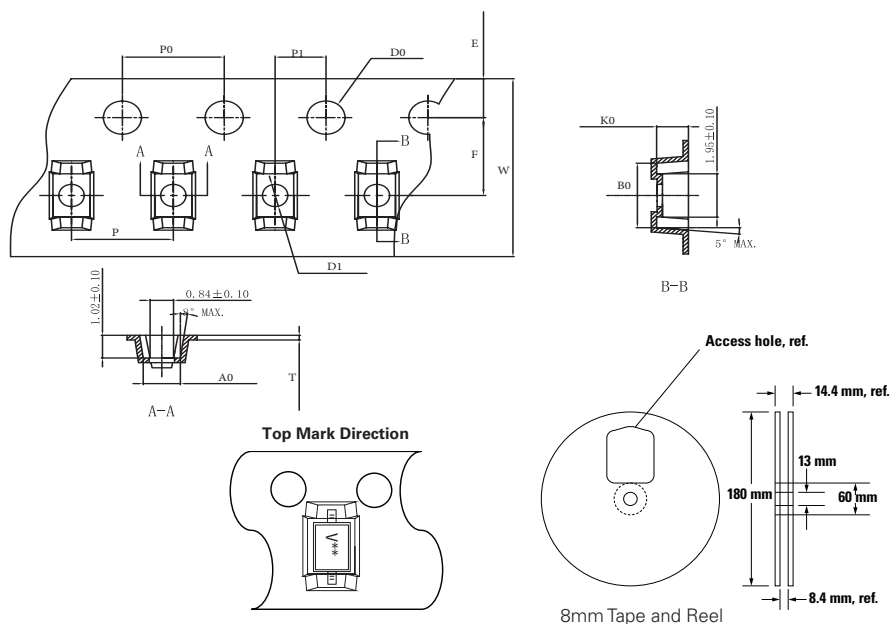
Symbol	Millimeters		Inches	
	Min	Max	Min	Max
A	0.51	0.77	0.020	0.030
A1	0.50	0.70	0.020	0.028
b	0.25	0.35	0.010	0.014
c	0.08	0.15	0.003	0.006
D	0.70	0.90	0.028	0.035
E	1.10	1.30	0.043	0.051
E1	1.50	1.70	0.059	0.067
E2	0.20 Ref		0.001 Ref	
L	0.01	0.07	0.000	0.003
θ	7° Ref		7° Ref	

Embossed Carrier Tape & Reel Specification — SOD882

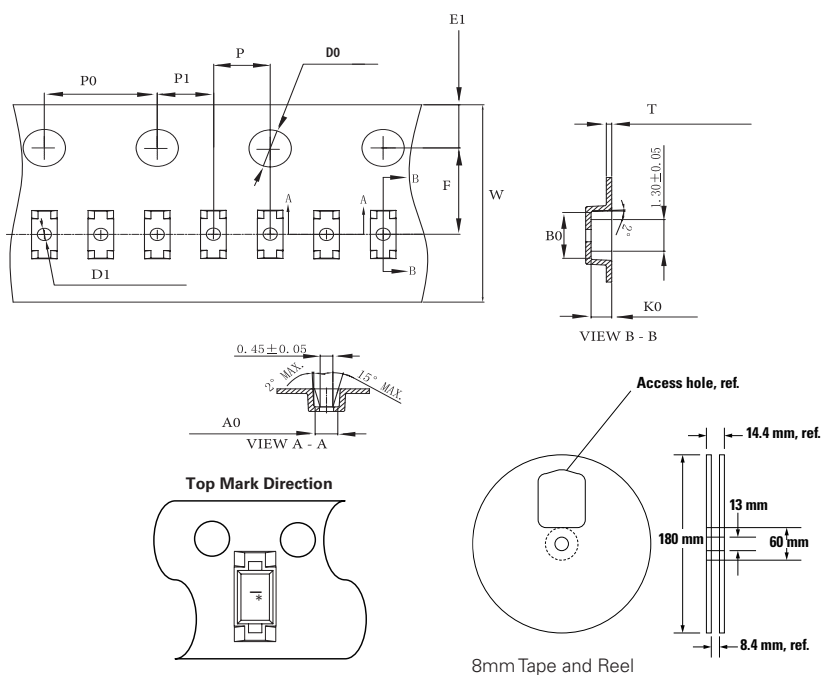
Symbol	Millimeters
A0	0.70+/-0.045
B0	1.10+/-0.045
D0	1.55+0.05
D1	0.40+/-0.05
E1	1.75+/-0.10
F	3.50+/-0.05
K0	0.65+/-0.045
P0	4.00+/-0.10
P1	2.00+/-0.10
T	0.20+/-0.05
W	8.00+0.30/-0.10

AQ24COM-01 Series

24 V Bidirectional 250 W TVS Diode Array Discrete, General Purpose ESD Protection

Embossed Carrier Tape & Reel Specification — SOD323

Symbol	Millimeters
A0	1.36 min/1.62 max
B0	2.85 min/3.40 max
W	8.0+0.3/-0.10
D0	1.40 min/1.60 max
D1	∅0.95 min/∅1.25 max
E	1.75+/-0.10
F	3.50+/-0.10
P0	4.00+/-0.10
P	4.00+/-0.10
P1	2.00+/-0.10
K0	1.15 min/1.45 max
T	0.254+/-0.02

Embossed Carrier Tape & Reel Specification — SOD523

Symbol	Millimeters
A0	0.85 min/1.01 max
B0	1.91+/-0.08
W	8.0+0.3/-0.10
D0	1.50+0.10
D1	∅0.25 min/∅0.60 max
E1	1.75+/-0.10
F	3.50+/-0.10
P0	4.00+/-0.10
P	2.00+/-0.05
P1	2.00+/-0.05
K0	0.68 min/0.78 max
T	0.20+/-0.03

Product Disclaimer: Littelfuse products are not designed for, and shall not be used for, any purpose (including, without limitation, automotive, military, aerospace, medical, life-saving, life-sustaining or nuclear facility applications, devices intended for surgical implant into the body, or any other application in which the failure or lack of desired operation of the product may result in personal injury, death, or property damage) other than those expressly set forth in applicable Littelfuse product documentation. Warranties granted by Littelfuse shall be deemed void for products used for any purpose not expressly set forth in applicable Littelfuse documentation. Littelfuse shall not be liable for any claims or damages arising out of products used in applications not expressly intended by Littelfuse as set forth in applicable Littelfuse documentation. The sale and use of Littelfuse products is subject to Littelfuse Terms and Conditions of Sale, unless otherwise agreed by Littelfuse. "Littelfuse" includes Littelfuse, Inc., and all of its affiliate entities. <http://www.littelfuse.com/disclaimer-electronics>.