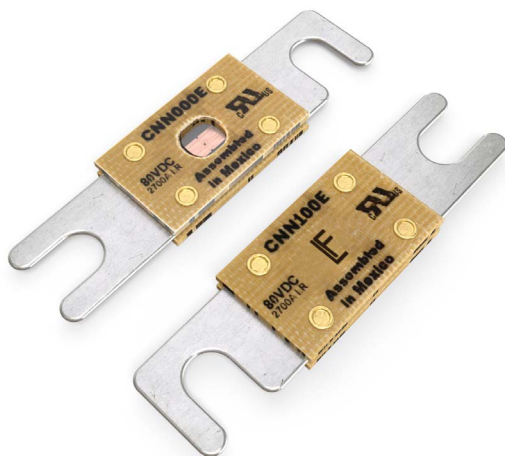


# POWR-GARD® Fuses

## CNN\_E Series Lift Truck

80 V dc • Very Fast-Acting • 35 - 800 A



### Description

CNN\_E fuses are rated for applications up to 80 V dc. As fork lift trucks and electrical vehicle system voltages increase, circuit protection needs to be rated higher than the standard CNN products to handle the increased voltage. The CNN\_E is considered very fast-acting for quicker reaction time.

### Features & Benefits

- Up to 80 V dc protection
- Up to 2,700 A interrupting rating
- Compact size saves space
- RoHS compliant and lead (Pb) free

### Applications

- Lift trucks
- Scissor lifts
- Pallet movers
- Low voltage battery powered equipment
- Data center

### Specifications

|                          |                                |
|--------------------------|--------------------------------|
| <b>Voltage Rating</b>    | 80 V dc                        |
| <b>Ampere Ratings</b>    | 35 - 800 A                     |
| <b>Max. Interrupting</b> | 2,700 A                        |
| <b>Environmental</b>     | RoHS Compliant, Lead (Pb) Free |
| <b>Country of Origin</b> | Mexico                         |

### Certification & Compliance

cURus

cURus (File E71611)

# POWR-GARD® Fuses

## CNN\_E Series Lift Truck

### Ordering Information

| AMPERE RATING (A) | CATALOG NUMBER | PRODUCT MARKING | PACKING QUANTITY | ORDERING NUMBER | UPC CODE    |
|-------------------|----------------|-----------------|------------------|-----------------|-------------|
| 35                | CNN035E        | CNN035E         | 5                | OCNN035E.V      | 07945818319 |
| 40                | CNN040E        | CNN040E         | 5                | OCNN040E.V      | 07945818320 |
| 50                | CNN050E        | CNN050E         | 5                | OCNN050E.V      | 07945818321 |
| 60                | CNN060E        | CNN060E         | 5                | OCNN060E.V      | 07945818322 |
|                   |                |                 | 100              | OCNN060E.H      | 07945824328 |
| 80                | CNN080E        | CNN080E         | 5                | OCNN080E.V      | 07945818323 |
|                   |                |                 | 100              | OCNN080E.H      | 07945824329 |
| 90                | CNN090E        | CNN090E         | 5                | OCNN090E.V      | 07945818324 |
|                   |                |                 | 100              | OCNN090.H       | 07945824330 |
| 100               | CNN100E        | CNN100E         | 5                | OCNN100E.V      | 07945818325 |
|                   |                |                 | 100              | OCNN100E.H      | 07945824331 |
| 125               | CNN125E        | CNN125E         | 5                | OCNN125E.V      | 07945818326 |
|                   |                |                 | 100              | OCNN125E.H      | 07945824332 |
| 150               | CNN150E        | CNN150E         | 5                | OCNN150E.V      | 07945818327 |
|                   |                |                 | 100              | OCNN150E.H      | 07945824333 |
| 175               | CNN175E        | CNN175E         | 5                | OCNN175E.V      | 07945818328 |
|                   |                |                 | 100              | OCNN175E.H      | 07945824334 |
| 200               | CNN200E        | CNN200E         | 5                | OCNN200E.V      | 07945818329 |
|                   |                |                 | 100              | OCNN200E.H      | 07945824335 |
| 225               | CNN225E        | CNN225E         | 5                | OCNN225E.V      | 07945818330 |
|                   |                |                 | 100              | OCNN225E.H      | 07945824336 |
| 250               | CNN250E        | CNN250E         | 5                | OCNN250E.V      | 07945818331 |
|                   |                |                 | 100              | OCNN250E.H      | 07945824337 |
| 275               | CNN275E        | CNN275E         | 5                | OCNN275E.V      | 07945818332 |
|                   |                |                 | 100              | OCNN275E.H      | 07945824338 |
| 300               | CNN300E        | CNN300E         | 5                | OCNN300E.V      | 07945818333 |
|                   |                |                 | 100              | OCNN300E.H      | 07945824339 |
| 325               | CNN325E        | CNN325E         | 5                | OCNN325E.V      | 07945818334 |
| 350               | CNN350E        | CNN350E         | 5                | OCNN350E.V      | 07945818335 |
| 400               | CNN400E        | CNN400E         | 5                | OCNN400E.V      | 07945818336 |
|                   |                |                 | 100              | OCNN400E.H      | 07945829772 |
| 500               | CNN500E        | CNN500E         | 5                | OCNN500E.V      | 07945818337 |
| 600               | CNN600E        | CNN600E         | 5                | OCNN600E.V      | 07945818338 |
| 700               | CNN700E        | CNN700E         | 5                | OCNN700E.V      | 07945818339 |
| 800               | CNN800E        | CNN800E         | 5                | OCNN800E.V      | 07945818340 |

# POWR-GARD® Fuses

## CNN\_E Series Lift Truck

### Dimensions Inches (mm)

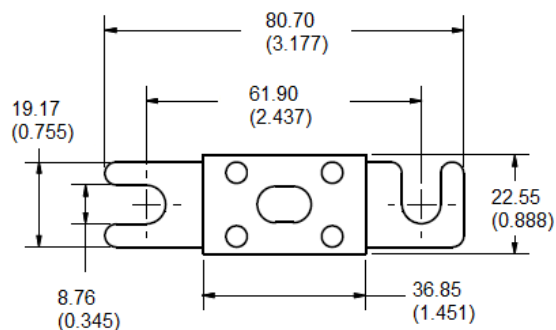


FIGURE 1

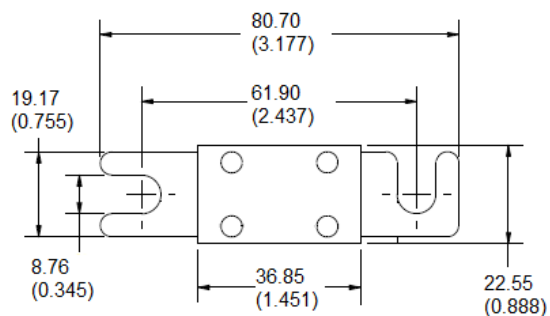


FIGURE 2

| AMPERE RATING (A) | FIGURE |
|-------------------|--------|
| 35                | 1      |
| 40                | 1      |
| 50                | 1      |
| 60                | 1      |
| 80                | 1      |
| 90                | 1      |
| 100               | 2      |
| 125               | 1      |
| 150               | 2      |
| 175               | 1      |
| 200               | 1      |
| 225               | 1      |
| 250               | 1      |
| 275               | 1      |
| 300               | 1      |
| 325               | 2      |
| 350               | 2      |
| 400               | 2      |
| 500               | 2      |
| 600               | 2      |
| 700               | 1      |
| 800               | 1      |

**Disclaimer Notice** – Information furnished is believed to be accurate and reliable. However, users should independently evaluate the suitability of and test each product selected for their own applications. Littelfuse products are not designed for, and may not be used in, all applications. Read complete Disclaimer Notice at [www.littelfuse.com/product-disclaimer](http://www.littelfuse.com/product-disclaimer).