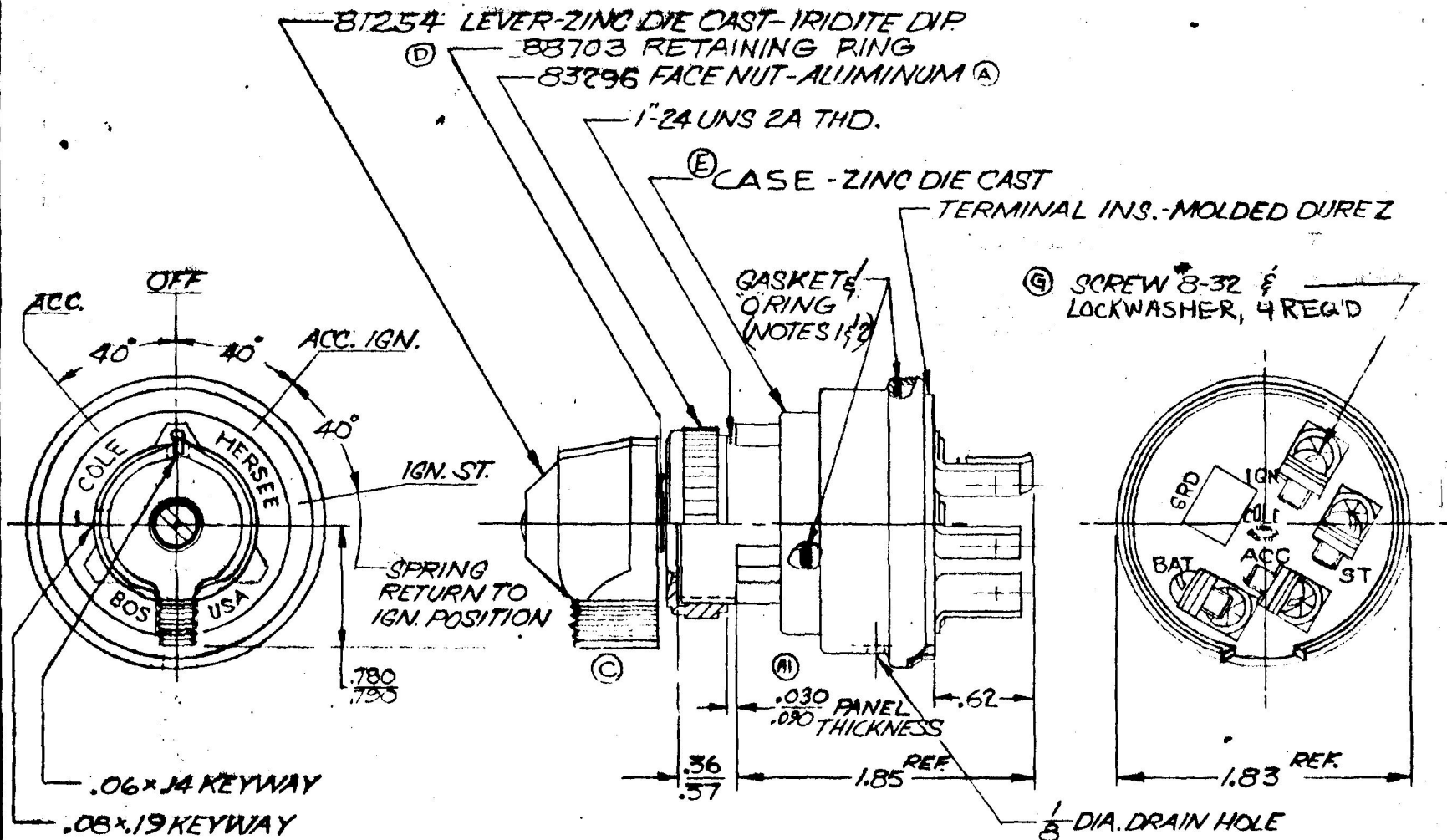


APPLICABLE SAE STANDARD OR RECOMMENDED PRACTICE SAEJ259

956-4124

NPM. 1-10-72

EX NONE



RATINGS AT 12V D.C.	
ACC. CIRCUIT	10 AMPS
IGN.	10
BT.	5

- NOTES:
1. SHAFT O-RING SEALED TO HOUSING.
  2. TERMINAL INSULATOR GASKET SEALED.
  3. ALL STEEL PARTS PLATED

DO NOT SCALE

LET	WAS	DATE	BY	LET	WAS	DATE	BY	MATERIAL	DRAWN	CHECKED	APPR'D	SCALE	Blk. 956 4111	DATE DRAWN
				C	81254 LEVER / 19843	4-6-77	RMT	—	CT	REC		FULL		1-12-72
G	ECN #00138	3/1/00	KE	B	SAE SPEC ADDED	3-5-74	3W	FINISH	<b>COLE-HERSEE COMPANY</b> BOSTON, MASS. 02127, U.S.A.					DATE BLUEPRINT
F	NOT ADDED / 25234	12/22/92	JH	A1	.060 / .110	17877	LY	—						
E	HOUSING	8-6-86	P	A	83344	17877	B	TOLERANCES FRACTIONAL ±	4 POSITION IGN. & START SWITCH					956-4124
D	RING / 20329	10-18-78	R		ISSUE	(1-12-77)		DECIMAL ±0.010						

SPAULDING CO., INC.

COLE-HERSEE CO.