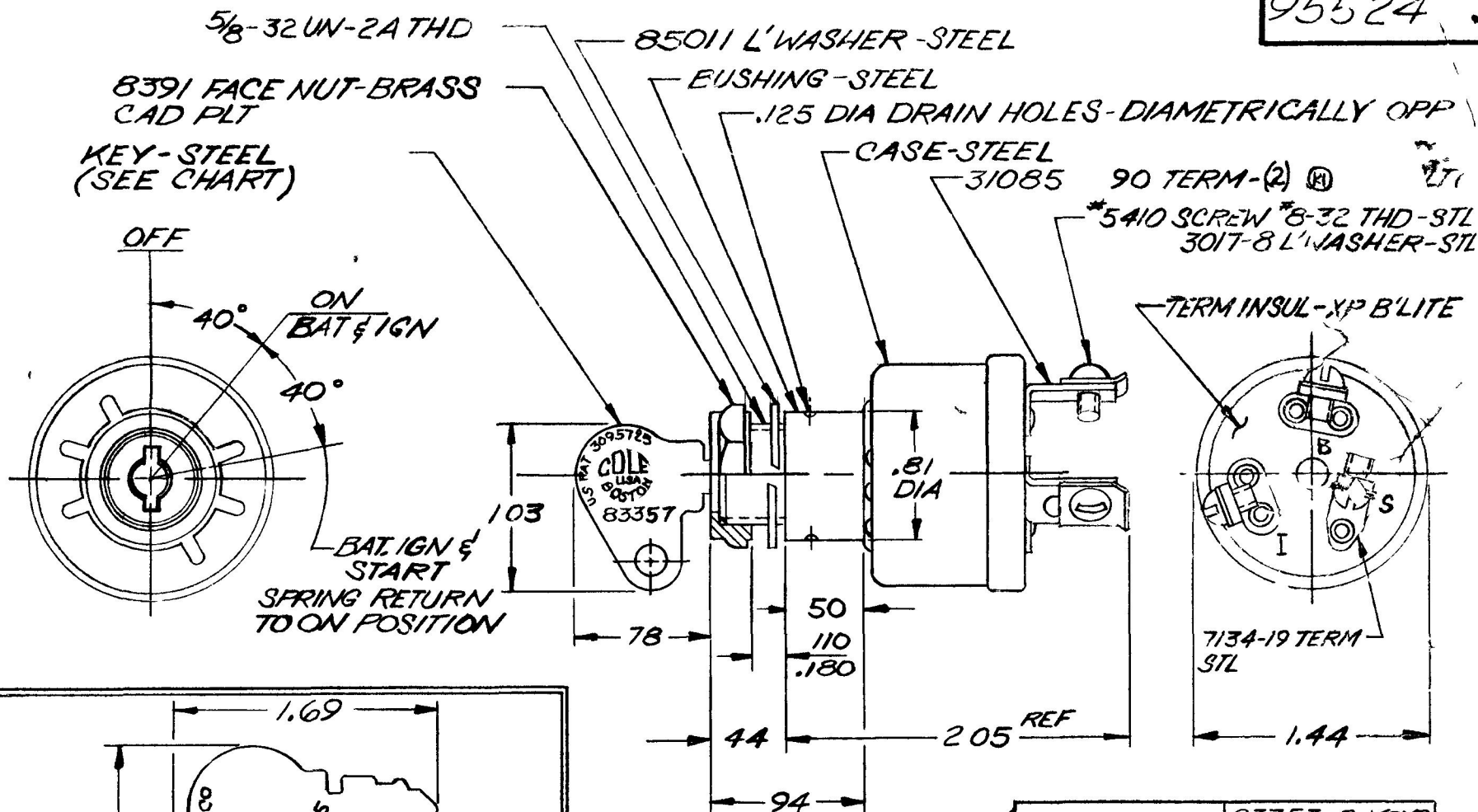


COLE-HERSEE CO.

95524



NOTES:
 (R) 1 ALL STEEL PARTS PLATED
 2 O RING SEALED AT BUSHING

APPLICABLE SAE STANDARD OR RECOMMENDED PRACTICE SAE J259

95524 B	83353-2 KEYS RINGED
95524 A	83357-2 KEYS RINGED
95524 BASIC	_____
SWITCH NO	KEY PART NO.

DO NOT SCALE

LET	WAS	DATE	BY	LET	WAS	DATE	BY	MATERIAL	DRAWN	CHECKED	APPRV D	SCALE	DATE DRAWN
								✓	EA	✓		FULL	12-13-62
								FINISH	COLE-HERSEE COMPANY				DATE BLUEPRINT
									BOSTON MASS 02127 U.S.A.				
								TOLERANCES	WEATHER PROOF				95524
								FRACTIONAL ±	IGN & START SWITCH				
								DECIMAL ± 01					

SPAULDING CO INC 47570