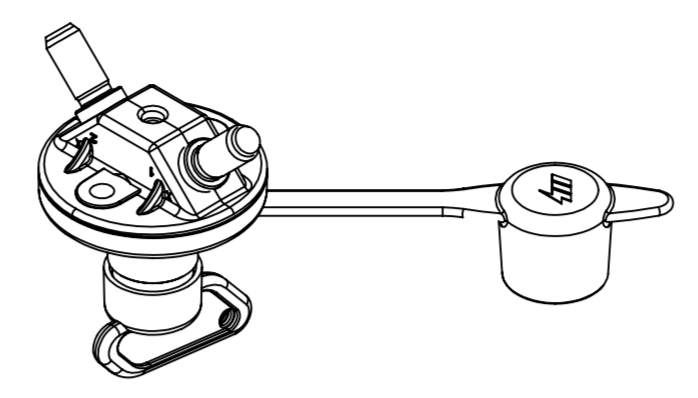
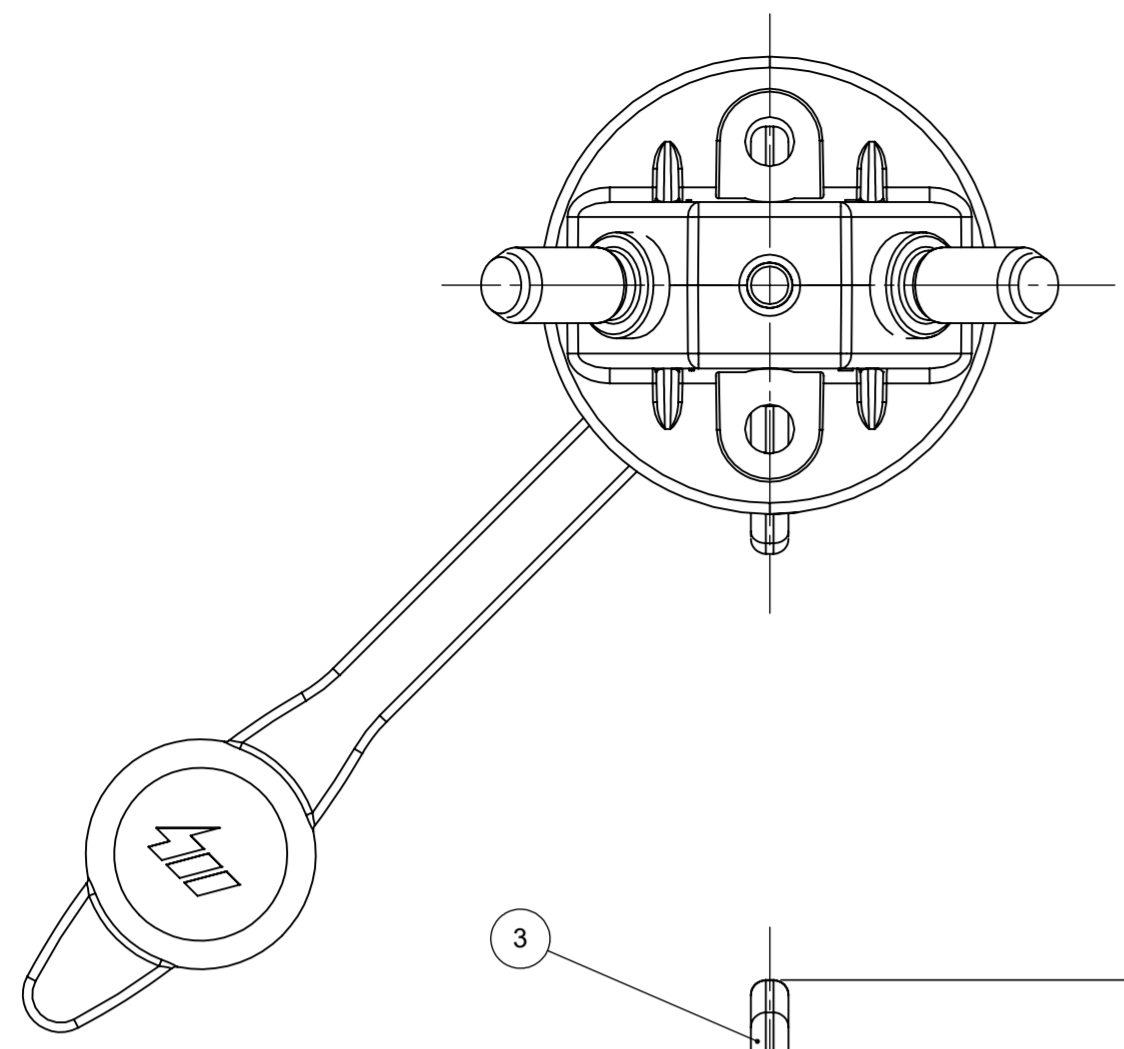


THIS DRAWING AND THE INFORMATION CONTAINED WITHIN IT ARE CONFIDENTIAL AND MAY NOT BE COPIED OR DISCLOSED WITHOUT THE WRITTEN PERMISSION OF LITTELFUSE.

REVISIONS				
REV.	DESCRIPTION	DATE	DESIGNED	APPROVED
A	First issue of outline drawing	20-May-20	L.Dal Molin	M.Tinto



SCALE 1:2

FEATURES

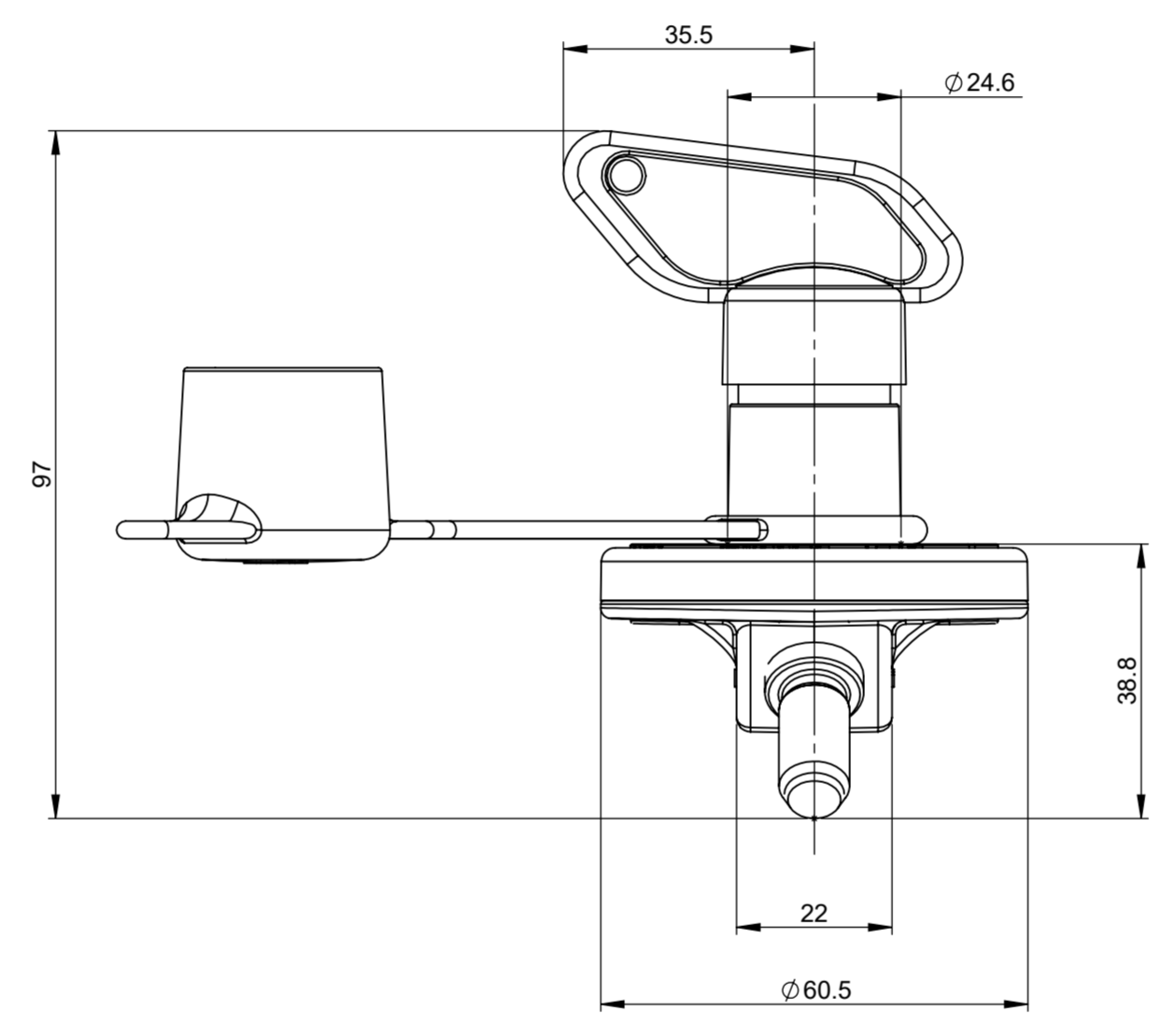
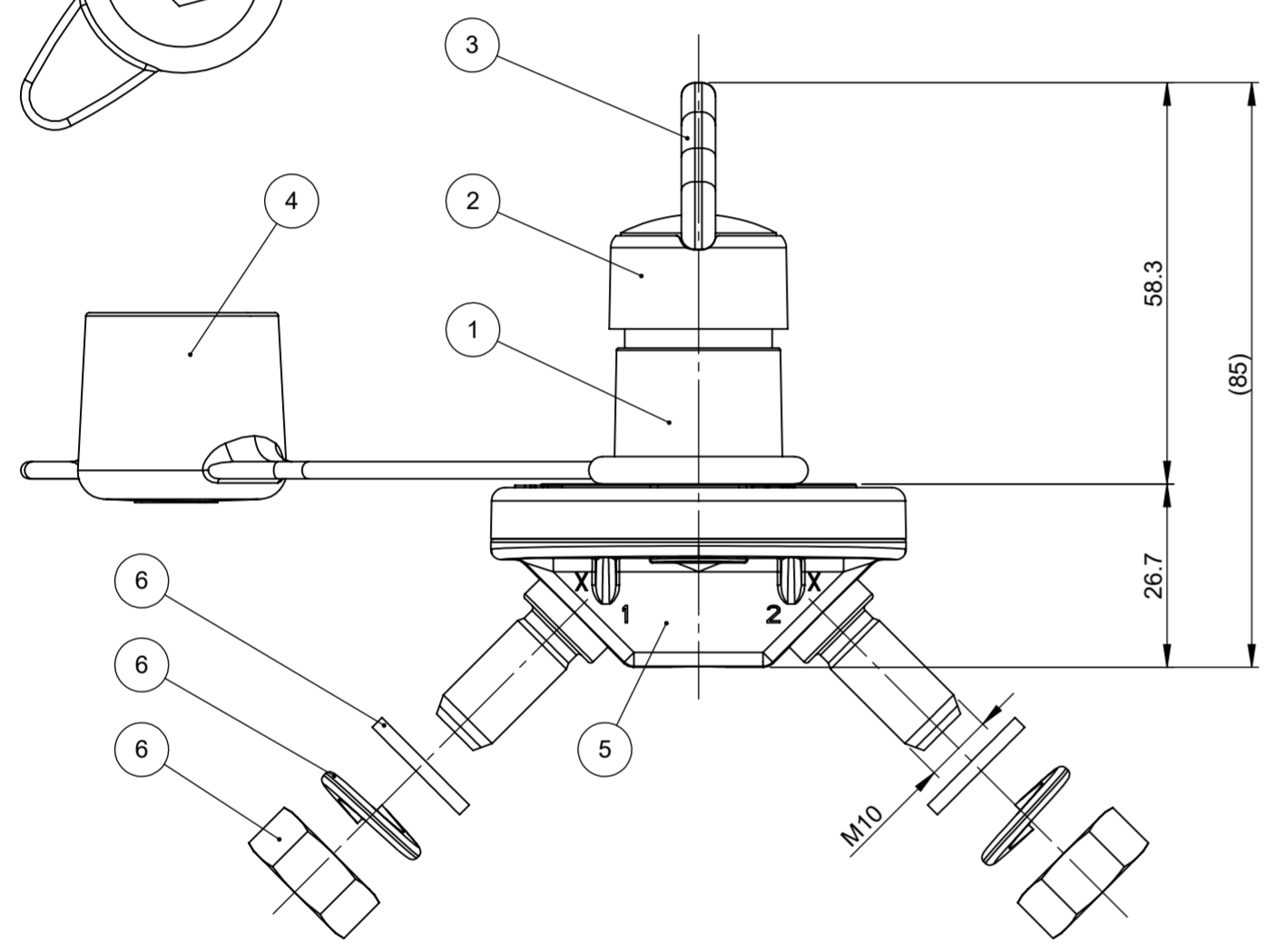
- Nominal voltage: 12V-24V
- Maximum direct current: 150A
- Maximum short time current: 1200 A for 5s at 23±5°C
- Number of electrical operations: 5000
- Number of mechanical operations: 5000
- M10 nuts tightening torque: 20±2 Nm
- Fixing on the bracket by screws and nuts M6 and tightening torque 3.3±0.2 Nm (only with cover or protection mounted)
- Components supplied not assembled: key, 2 M10 nuts, 2 flat washers and 2 washer springs

ASSEMBLY KEY

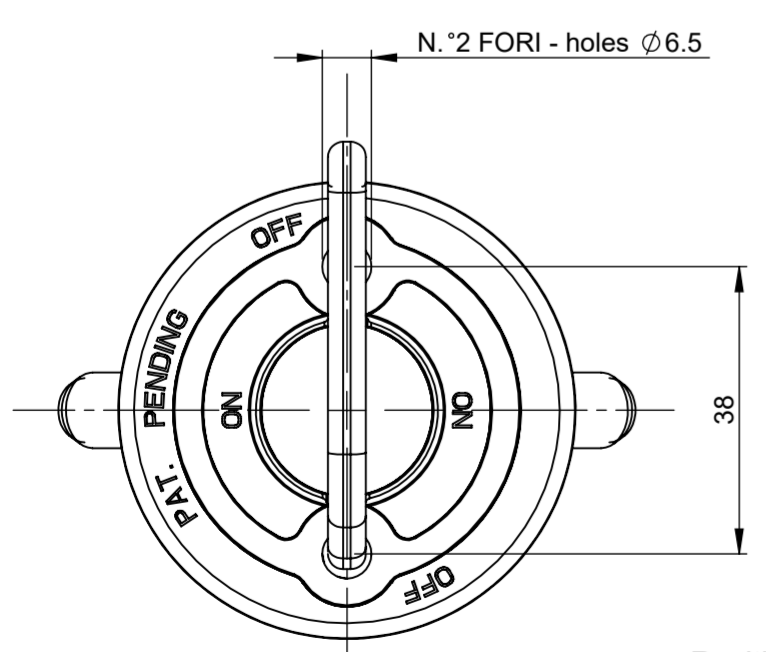
- To assemble the key, insert it and turn it clockwise of 15° taking the device in state Switched OFF; to remove it, with the device in state Switched OFF turn it counterclockwise of 15° and extraxt it

OPERATION

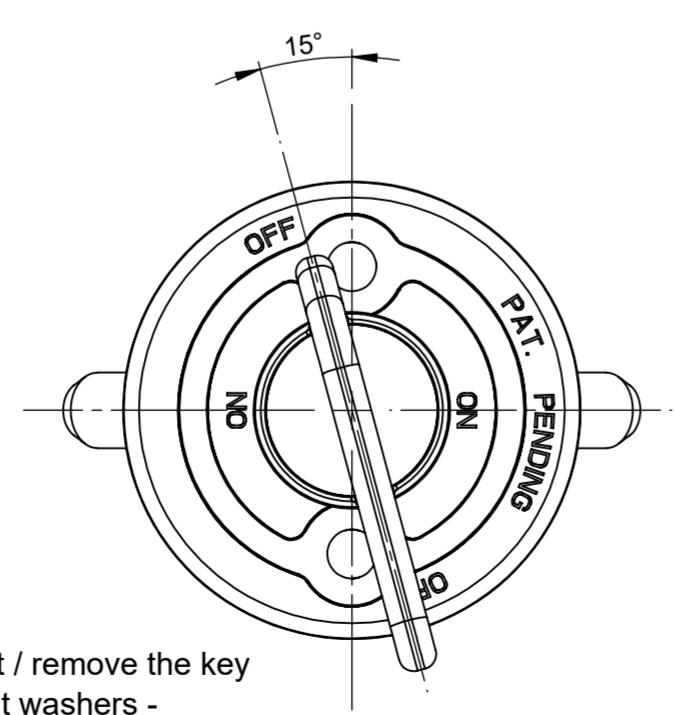
- To close the contacts: turn clockwise the key of 90°
- To open the contacts: turn counterclockwise the key of 90°



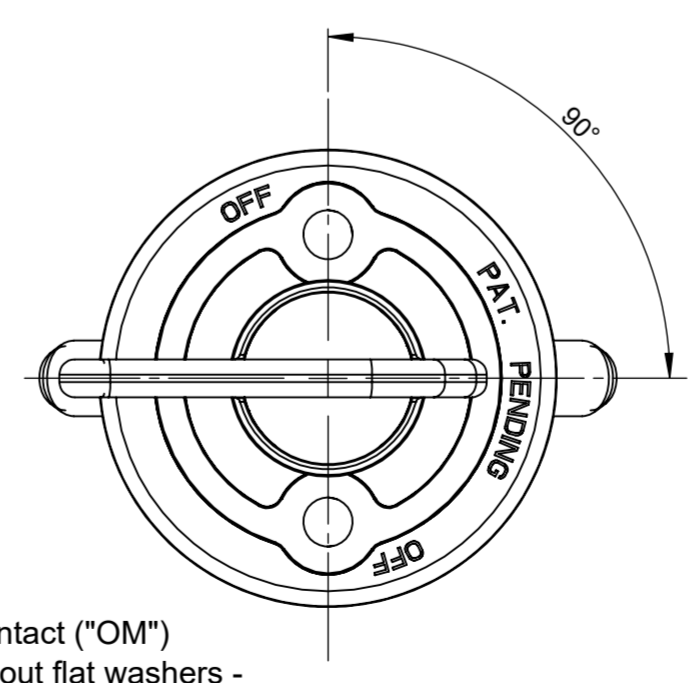
POS.	DESCRIPTION	MATERIAL	Q.TY	U/M
6	Kit for Bms Igc/175		1	EA
5	Lower body comoulded		1	EA
4	Cap eyelet for key	Rubber	1	EA
3	Ring protection key	Polyamide	1	EA
2	Key	Polyamide	1	EA
1	Upper body with key	Polyamide	1	EA



Open contact ("OFF")
(View without flat washers - washer springs - nuts)



Position to insert / remove the key
(View without flat washers - washer springs - nuts, and protection cap)



Closed contact ("ON")
(View without flat washers - washer springs - nuts and protection cap)

SAP drawing number:

Material and treatments:

DIMENSIONS AND TOLERANCES IN MILLIMETERS, DEFINED ACCORDING TO ISO 1101-2017.						
linear dimensions						
0,5	>3	>6	>30	>120	>400	>1000
3	6	30	120	400	1000	2000
±0,2	±0,3	±0,5	±0,8	±1,2	±2	±3
angle (for range of lengths)						
up to 10	>10	>50	>120	>400	>1200	>2000
±1°30'	±1°	±0°30'	±0°15'			
●	FIT/ FUNCTION CRITICAL CHARACTERISTICS SYMBOL					
<S>	SAFETY/ COMPLIANCE CRITICAL CHARACTERISTICS SYMBOL					
CPK	DENOTES CPK DIMENSIONS MINIMUM CPK VALUE					
ST	DENOTES A CHARACTERISTIC THAT PROVIDES AN INDICATION OF PROCESS PERFORMANCE.PROCEDURE FOR MEASUREMENT AND TRACKING TO BE DEFINED IN LITTELFUSE INSPECTION INSTRUCTIONS					
CP	DENOTES CP DIMENSIONS. -MINIMUM CP VALUE MUST BE WITHIN THE DIMENSIONAL LIMITATIONS SHOWN ON DRAWING AND INITIALLY LOCATED TO ALLOW FOR MAXIMUM TOOL LIFE					
NAME		DATE				
DRAWN	L. Dal Molin	02-Apr-19				
CHECKED	-	-				
 Expertise Applied Answers Delivered						
FORM NO. CVP-PE40-0013 REV A						
FIRST ANGLE PROJECTION						
TITLE MANUAL BDS IGC/175-C						
SIZE:	A2	DWG. NO.:	OL-08080381	OUTLINE REV.:	A	
DO NOT SCALE DRAWING						
SCALE 1:1		SHEET 1 OF 1				