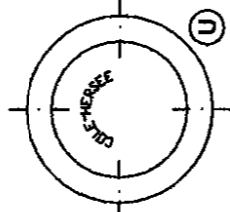
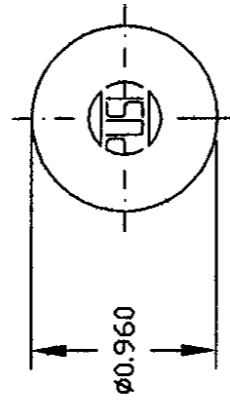
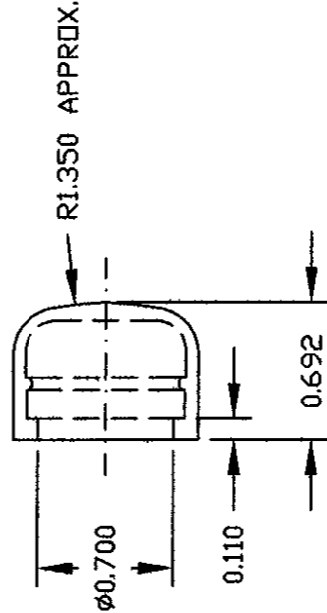


Revision Control Record

Rev.	Description of Change	ECN No.	Date
S	407-02	03280	7/30/03
T	MATERIAL WAS 3C A15A25	03383	8/13/03
U	REMOVE U.S.A. NOTE CHANGE	04069	02/13/04



407-06	BRICK RED	SILICONE RUBBER	SEE NOTE 2	U
407-05	BROWN	HYDRIN	SEE NOTE 2	U
407-03	BLACK	EPDM	SEE NOTE 2	U
407-02	RED	EPDM	SEE NOTE 1 & 2	S
407-01	GRAY	EPDM	SEE NOTE 2	U

PART NO.	COLOR	TYPE	SAE SPEC	MATERIAL

NOTES:
 1. MATERIAL: SAE J200, 3C A515A25, B44C32 & F17
 2. MATERIAL UV PROTECTED

TOLERANCES - Unless otherwise specifically noted, the following are default tolerances:
 • 2-place Decimal Dimensions $\pm .02$ "
 • 3-place Decimal Dimensions $\pm .005$ "
 • Angular Dimensions ± 1.0 Deg.
 • Metric: Refer to equivalent English Dimension Tolerances
 >>> NOTE: All tolerances are *Non-Cumulative*, etc

Dimensional Units - All dimensions are expressed in inches except those shown in brackets (mm) are expressed in millimeters

SCALE - 1:1

DATE - 1/26/66

Drawn By: EA **Date:** 1/26/66

Used On: EX27841 **Scale:** 1:1

Drawn: EA **Date:** 1/26/66

Responsible Engineer: Pg. 1 of 1

Key for Special Characteristics
 Critical Characteristics, relating to safety and/or Regulatory Compliance
 Significant Characteristics relating to Process Control (SPC)
 Key Characteristics relating to Form - Fit - Function as defined by Cole Hersee Company and/or the Customer
 (Note that the identification of any Characteristics as being "Special" does not alter the requirement that ALL specified dimensions & tolerances must be met.)

Cole Hersee Co.
 28 Old Colony Ave., South Boston, MA, 02127
 Phone 617-268-2100 Web: www.colehersee.com

Description: CAP

Drawing / Part No.: 407-CHART

Current Rev.: U