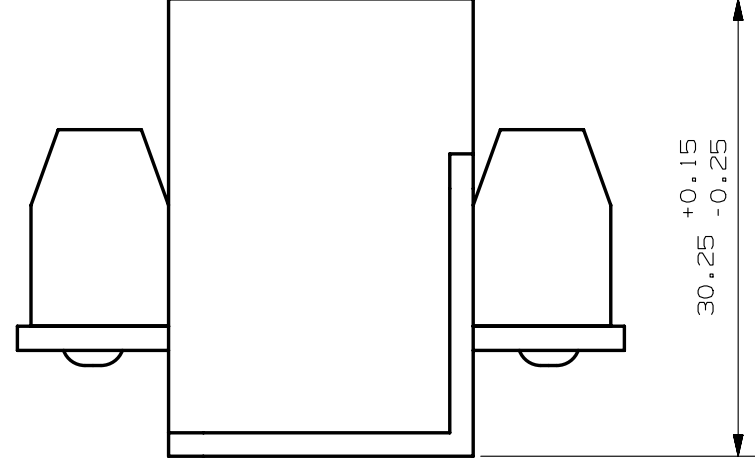
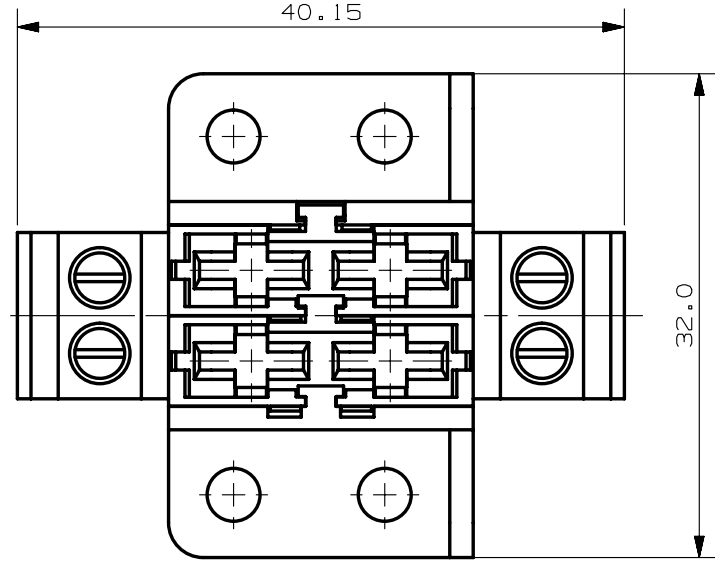
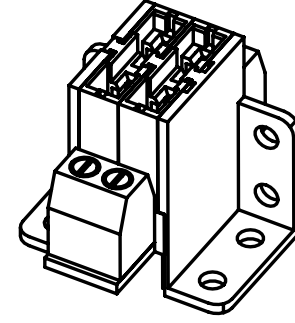


Art.Nr.	Description	NOTE
178.6152.0020	CAR FUSEHOLDER FOURFOLD	-



3D VIEW  
SCALE 1:1



**METRIC**  
ASSEMBLY

UNLESS OTHERWISE SPECIFIED, DIMENSIONS ARE IN MILLIMETERS.  
DIMENSIONS IN BRACKETS [ ] ARE INCHES  
UNLESS OTHERWISE SPECIFIED, DIMENSIONS DO NOT INCLUDE PLATING.  
**◎** DENOTES CRITICAL CHARACTERISTICS.  
CPK DENOTES CPK DIMENSIONS, -MINIMUM CPK VALUE  
**⊞** DENOTES A CHARACTERISTIC THAT PROVIDES AN INDICATION OF PROCESS PERFORMANCE. PROCEDURE FOR MEASUREMENT AND TRACKING TO BE DEFINED IN LITTELFUSE INSPECTION INSTRUCTIONS  
CP DENOTES CP DIMENSIONS, -MINIMUM CP VALUE MUST BE WITHIN THE DIMENSIONAL LIMITATIONS SHOWN ON DRAWING AND INITIALLY LOCATED TO ALLOW FOR MAXIMUM TOOL LIFE

NO	COMPONENT NO	DESCRIPTION	QTY/M	U/M
BILL OF MATERIAL				

LTR	DATE	REVISION	CHK	APD
A	10/04/99	RELEASE (ULB)		
B	11/29/99	CHANGE ARTICLE NO. (ULB)		
C	06/17/04	AEND.NR.478/292 (HOEP)		
D	07/30/12	505821ECA - REDRAW (PJ)		

COPIES TO	MATL SPEC
1 9 18	-
2 10 19	FINISH -
3 12 20	DRW Pascal Jung DATE 07/30/12 SCALE 2:1
4 13 21	CHK DATE SUPER DR
5 14 23	APPD DATE FINISH GOOD WT
6 15 33	TOLERANCES UNLESS OTHERWISE SPECIFIED (REF. ISO 2768-mk)
7 16 43	DIMENSION 0.5 - 3 UP TO OVER UP TO OVER UP TO OVER
8 17 53	TOLERANCE +0.1 ±0.1 ±0.2 ±0.3 ±0.5
3RD ANGLE PROJECTION	
TITLE CAR FUSEHOLDER TWOFOLD COMBINATION	
CHICAGO, USA 773-628-1000	
REVISION DRWG. NO. 178.6152.0020	