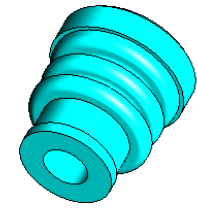
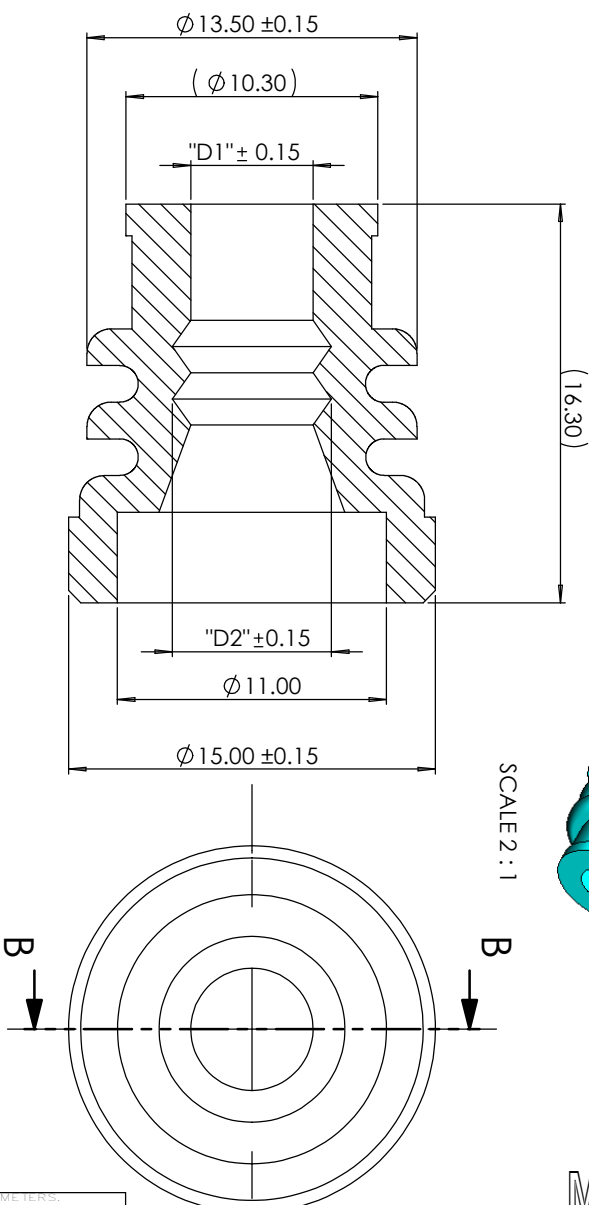


CAD GENERATED DRAWING - NO PENCIL CHANGES ALLOWED (rev A)



SCALE 2 : 1

METRIC
COMPONENT

SECTION B-B

CABLE SEAL FOR OUTPUT WIRE

PART NAME	PART NUMBER	D1	D2	COLOR
Cable Seal -10 ~16 mm sq	0HBFA001SEALB	5.0	7.1	BLUE
Cable Seal -6~10 mm sq	0HBFA001SEALY	3.3	5.7	YELLOW
Cable Seal -BLIND	0HBFA001SEALC	N/A	N/A	GREY

UNLESS OTHERWISE SPECIFIED, DIMENSIONS ARE IN MILLIMETERS. DIMENSIONS IN BRACKETS [] ARE INCHES

UNLESS OTHERWISE SPECIFIED, DIMENSIONS DO NOT INCLUDE PLATING.

⊙	DENOTES CRITICAL CHARACTERISTICS.
CPK	DENOTES CPK DIMENSIONS, -MINIMUM CPK VALUE
<S>	DENOTES A CHARACTERISTIC THAT PROVIDES AN INDICATION OF PROCESS PERFORMANCE. PROCEDURE FOR MEASUREMENT AND TRACKING TO BE DEFINED IN LITTELFUSE INSPECTION INSTRUCTIONS
CP	DENOTES CP DIMENSIONS, -MINIMUM CP VALUE MUST BE WITHIN THE DIMENSIONAL LIMITATIONS SHOWN ON DRAWING AND INITIALLY LOCATED TO ALLOW FOR MAXIMUM TOOL LIFE

NO	COMPONENT NO	DESCRIPTION	QTY/M	U/M
----	--------------	-------------	-------	-----

BILL OF MATERIAL

REV	DATE	REVISION	CH	AP	DESCRIPTION
A	3/19/15	FORM 871514F CAD INITIAL ALPHA RELEASE SVU	K	D	

COPIES TO		MATERIAL SPEC	
1	9	Silicone Rubber, BLUE	
2	10	FINISH	
3	12	DRW	xxx
4	13	DATE	3/19/15
5	14	SCALE	1:1
6	15	CHK	
7	16	DATE	
8	17	APPD	
		DATE	
		FINISH GOOD WT	
TOLERANCES UNLESS OTHERWISE SPECIFIED (REF. ISO 2768-FH)			
DIMENSION	0.5 - 3	3 - 6	6 - 30
TOLERANCE	±0.05	±0.03	±0.1
		30 - 120	120 - 400
		±0.15	±0.2
TITLE			
Cable seal 10-16 mm2 (BLUE)			
Littelfuse		REVISION	DRWG. NO.
		A	OL-0HBFA001SEALB