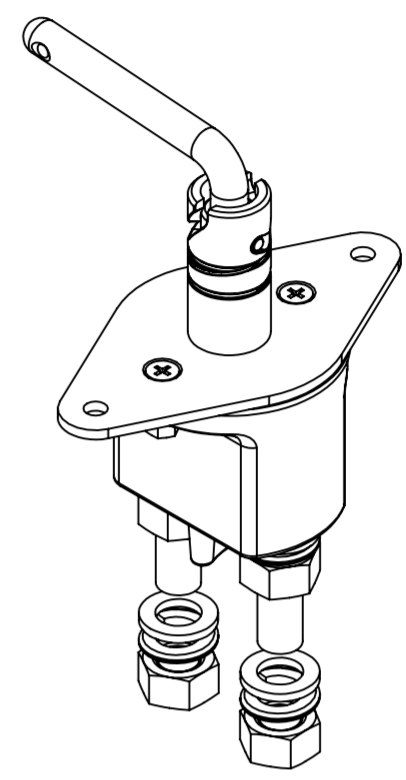
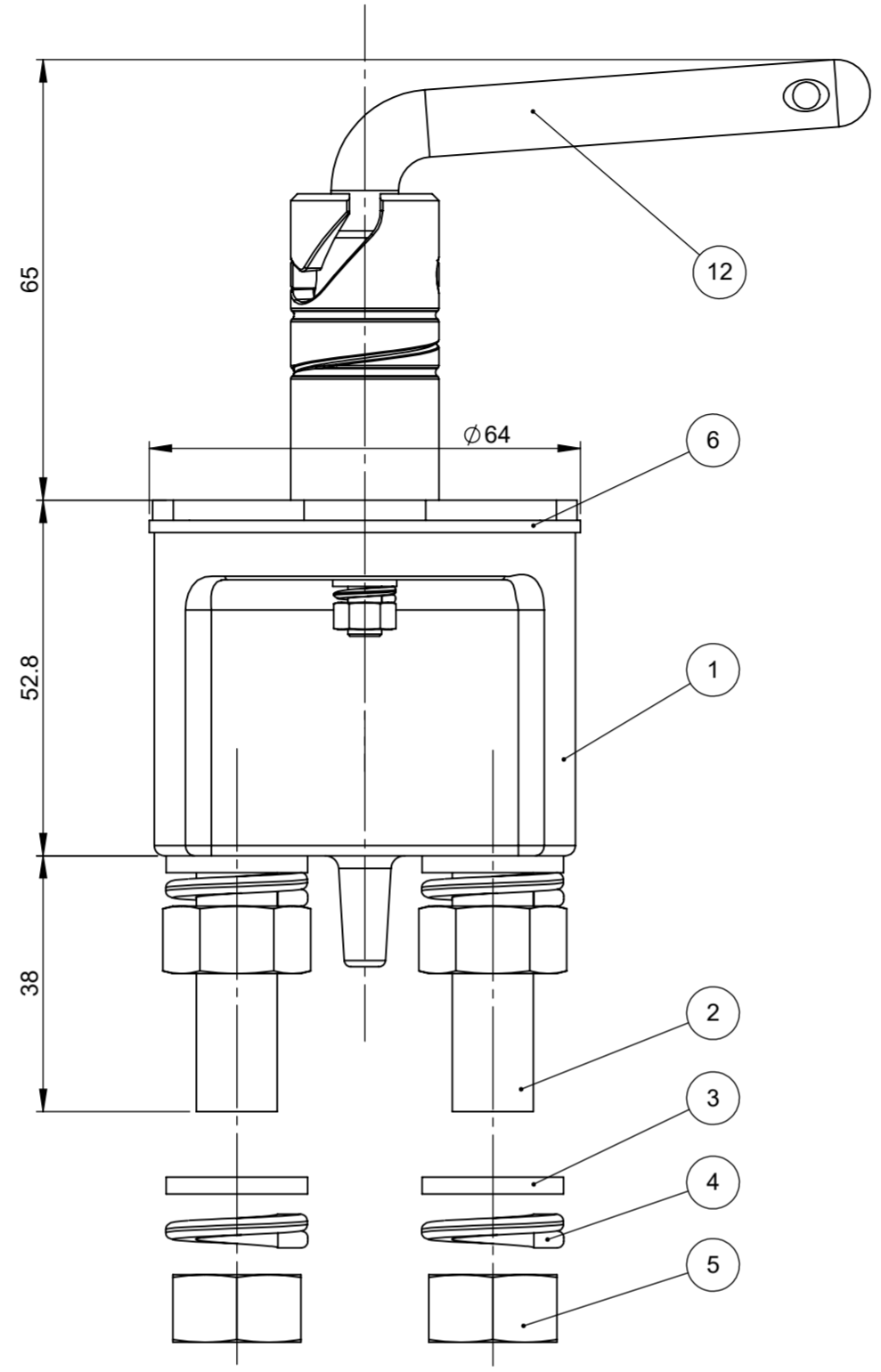
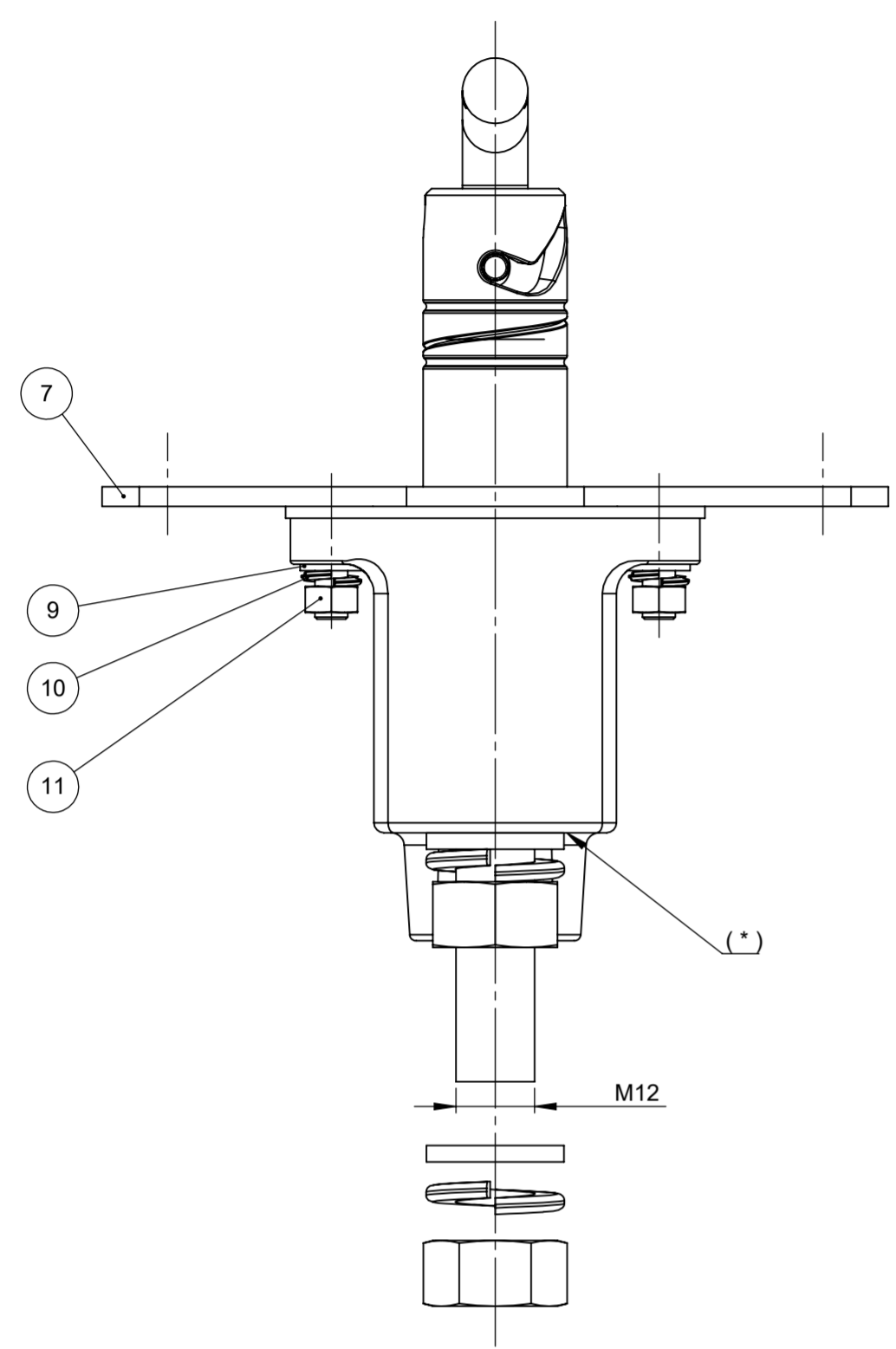


THIS DRAWING AND THE INFORMATION CONTAINED WITHIN IT ARE CONFIDENTIAL AND MAY NOT BE COPIED OR DISCLOSED WITHOUT THE WRITTEN PERMISSION OF LITTELFUSE.

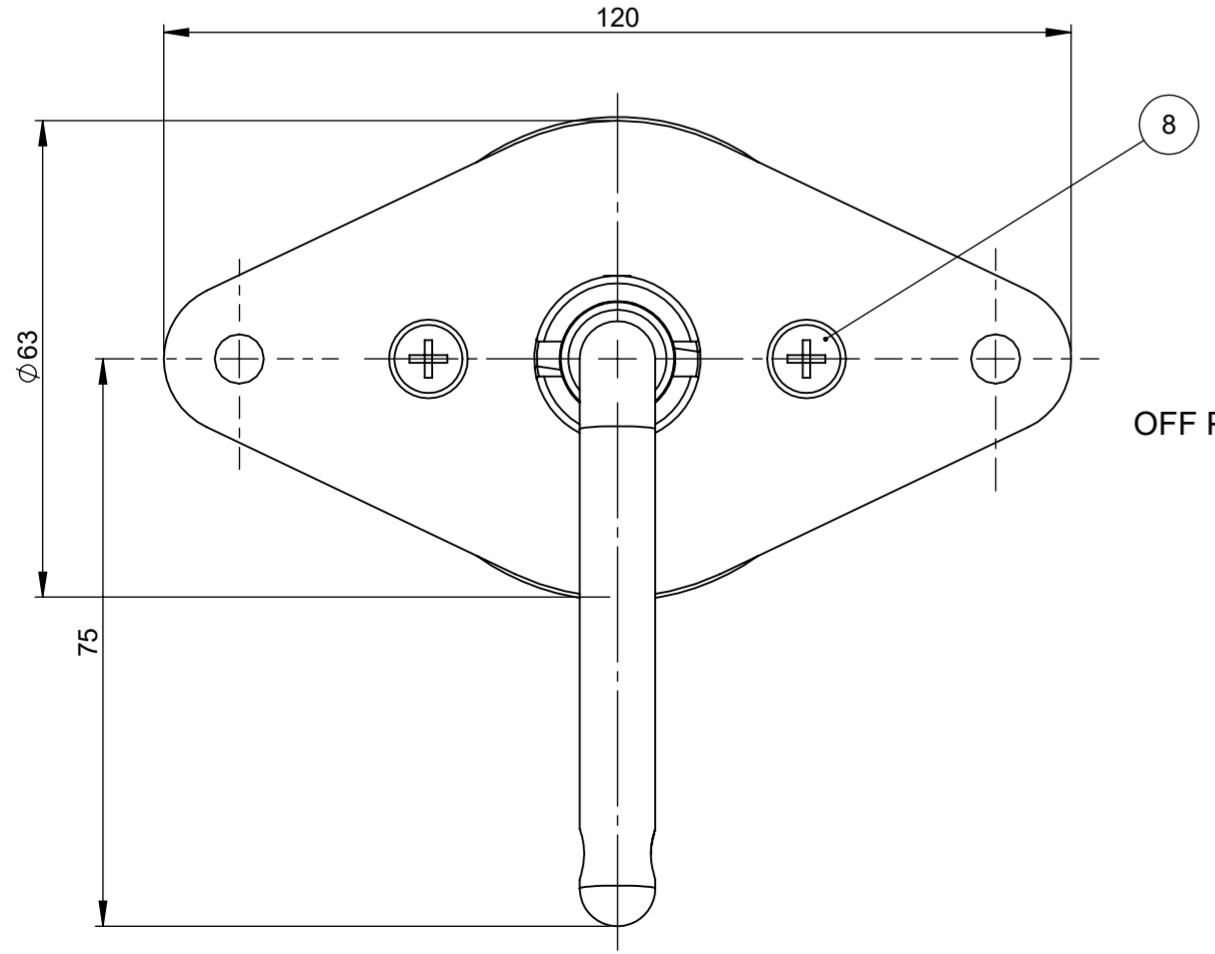
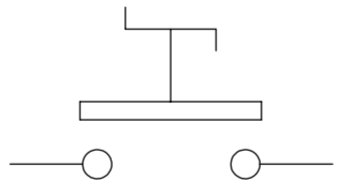
REVISIONS				
REV.	DESCRIPTION	DATE	DESIGNED	APPROVED
A	First issue of outline drawing	28-May-20	L.Dal Molin	M.Tinto



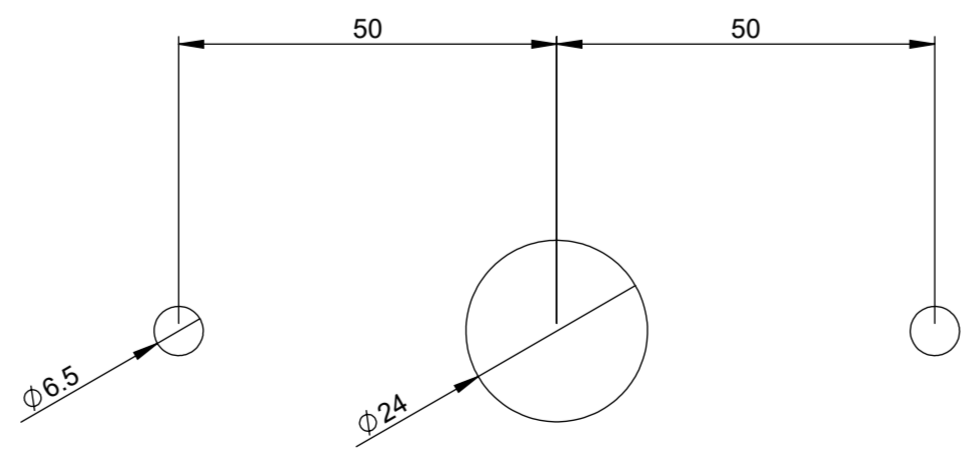
SCALE 1:2

POS.	P/N	DESCRIPTION	MATERIAL	Q.TY	U/M
12	08099800	Lever complete	Steel	1	EA
11		Nut M5	Steel	2	EA
10		Spring washer To 5	Steel	2	EA
9		Plain washer Tc 5.3x9	Steel	2	EA
8		Screw M5x20	Steel	2	EA
7		Upper body cam	Steel	1	EA
6		Gasket	Silicone rubber	1	EA
5		Nut M12x1.25	Steel	4	EA
4		Spring washer To 12	Steel	4	EA
3		Plain washer 13x21x2.5	Steel	4	EA
2		Screw fixed contact M12x1.25	Copper	2	EA
1		Cont.-holder 2xM12 long flame	Phenolic resin	1	EA

ELECTRICAL DIAGRAM



FIXING HOLES



PRESCRIPTIONS

- (*) Marking of date of manufacturing
- Torque of handle 3.5 ± 2 Nm at 23°C
- Currents:
350A continuously
2000A for 30seconds at 23°C
2500A for 5seconds (short circuit) at 23°C
- Nominal tension: 12V ÷ 24V
- Number of electrical operations: 5000
- Number of mechanical operations: 5000

SAP drawing number:

Material and treatments:

DIMENSIONS AND TOLERANCES IN MILLIMETERS, DEFINED ACCORDING TO ISO 1101-2017.						
linear dimensions						
0,5	>3	>6	>30	>120	>400	>1000
3	6	30	120	400	1000	2000
±0,2	±0,3	±0,5	±0,8	±1,2	±2	±3
angle (for range of lengths)						
up to	>10	>50	>120	>400	>1200	>2000
10'	50'	120'	400'	1200'	2000'	
±1°30'	±1°	±0°30'	±0°15'			
●	FIT/ FUNCTION CRITICAL CHARACTERISTICS SYMBOL					
<S>	SAFETY/ COMPLIANCE CRITICAL CHARACTERISTICS SYMBOL					
CPK	DENOTES CPK DIMENSIONS MINIMUM CPK VALUE					
ST	DENOTES A CHARACTERISTIC THAT PROVIDES AN INDICATION OF PROCESS PERFORMANCE.PROCEDURE FOR MEASUREMENT AND TRACKING TO BE DEFINED IN LITTELFUSE INSPECTION INSTRUCTIONS					
CP	DENOTES CP DIMENSIONS. MINIMUM CP VALUE MUST BE WITHIN THE DIMENSIONAL LIMITATIONS SHOWN ON DRAWING AND INITIALLY LOCATED TO ALLOW FOR MAXIMUM TOOL LIFE					
NAME		DATE		 Expertise Applied Answers Delivered		
DRAWN		L. Dal Molin 09-Apr-19				
CHECKED		-		TITLE		
-		-		MANUAL MAIN SWITCH IGC/350F		
-		-		FORM NO: CVP-PE40-0013 REV A		
-		-		FIRST ANGLE PROJECTION		
-		-		SIZE: A2		
-		-		DWG. NO. OL-08098900		
-		-		OUTLINE REV. A		
-		-		DO NOT SCALE DRAWING		
-		-		SCALE 1:1		
-		-		SHEET 1 OF 1		