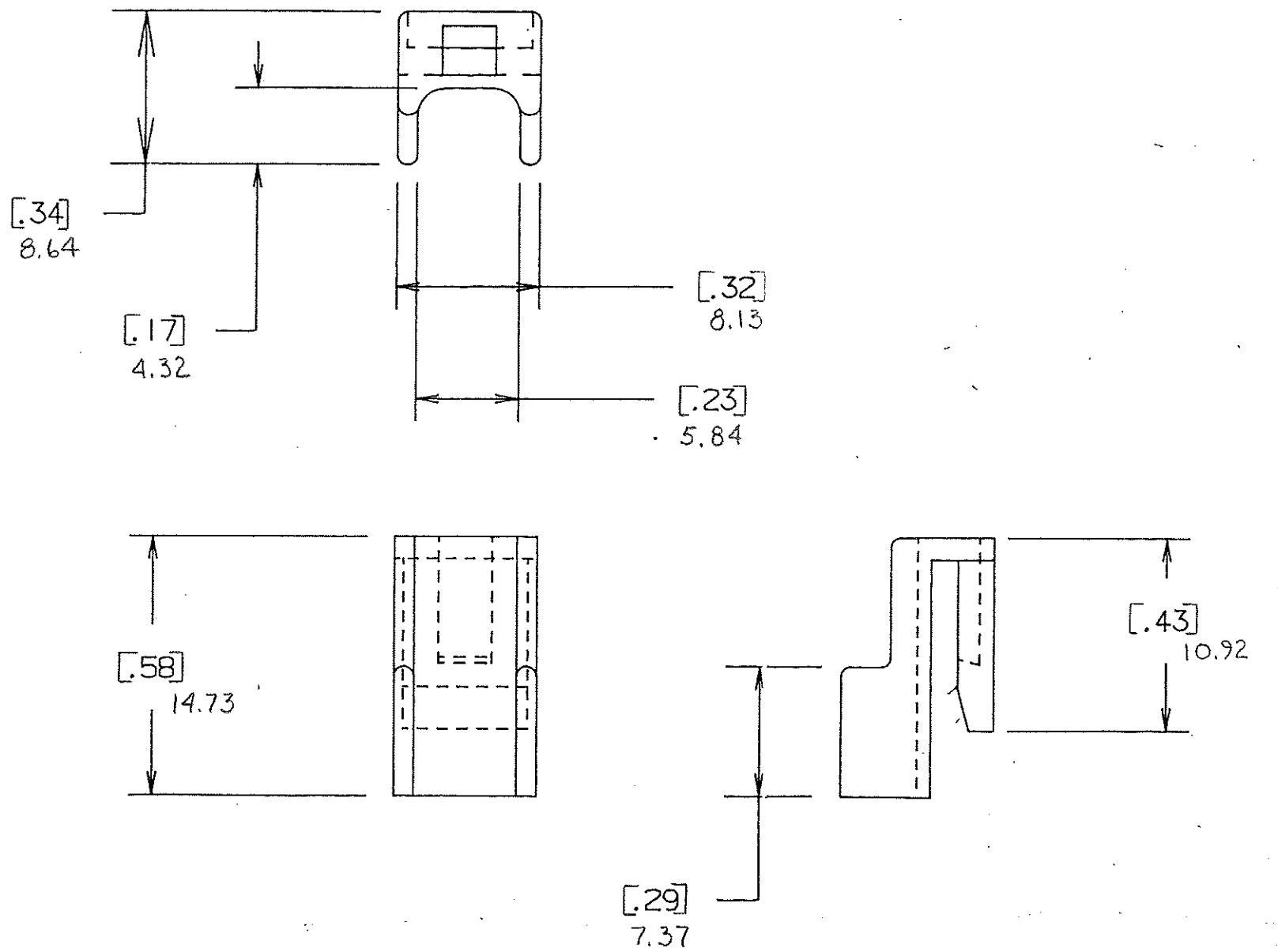


DRAWING NO.



NOTE:

ALL DIMENSION ARE IN MILLIMETERS,  
ENGLISH DIMENSIONS IN [ ]

CERTIFICATION OF  
COUNTRY OF ORIGIN  
REQUIRED

COPIES TO	18	19	20	21	23	33	43	53
	9	10	12	13	14	15	16	17
MAT'L. SPEC.		Nylon Color: Green		FINISH		SCALE		SUPER. DR.
DR.		GES. Oct. 7, 94		CHK.		DATE		RAW STK. WT.
APPD.		A. Husley		10-11-94		TOLERANCE UNLESS OTHERWISE SPECIFIED		LBS./M
TITLE		TERMINAL LOCKS		TWO PLACE DEC. ± .50mm [.020]		THREE PLACE DEC. ± .25mm [.010]		ANGULAR ±
LITTELFUSE		800 E. NORTHWEST HIGHWAY		DES PLAINES, ILLINOIS 60016		DRWG. NO.		03540528Z

LTR	REVISION	CHK.	APD.
A	06534 - RELEASED OCTOBER 10, 94 GES.	GES	AA
B	36980C - ADD METRIC DIM'S 7-19-95 RFR	GES	CS
C	37085D - CHANGE TITLE 8-19-95 JCU	TBB	CS
D	37150D - CHANGE TITLE 11/2/95 GES	GES	CS
E	000807ER - RE-INSTATE 10/09/09 J.U.		