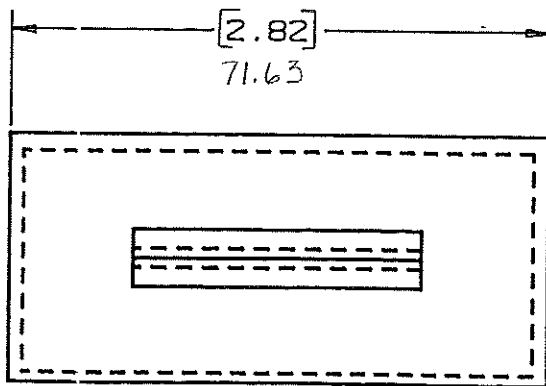
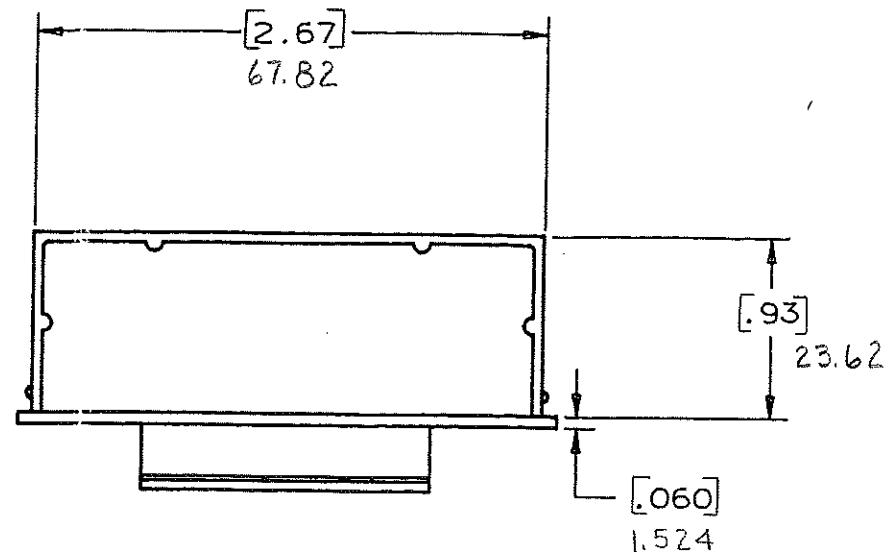
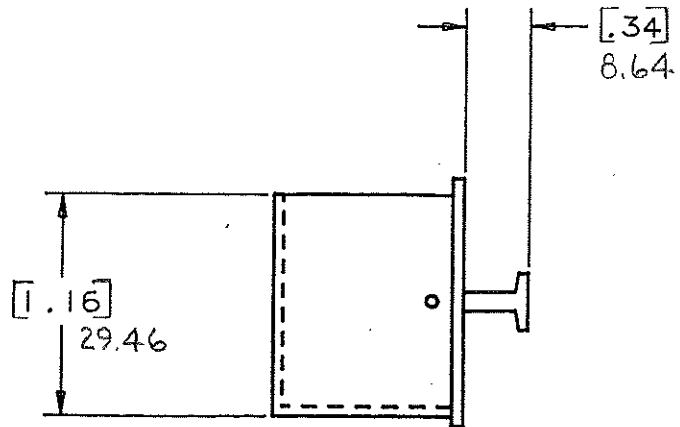


DRAWING NO.



CERTIFICATION OF COUNTRY OF ORIGIN REQUIRED

NOTE:

ALL DIMENSIONS ARE IN MILLIMETERS, ENGLISH DIMENSIONS IN [].

COPIES TO	18	MAT'L. SPEC.	NYLON COLOR: BLACK				
	9		FINISH	SCALE			
2	19	DR.	GES. Oct. 7 94	CHK. <i>ges.</i>	SUPER. DR.		
3	20	APPD.	<i>A. Husley</i>	DATE	10-11-94	RAW STK. WT.	LBS./M
4	21	TOLERANCE UNLESS OTHERWISE SPECIFIED					
5	22	TWO PLACE DEC. ± .50mm [0.020] FRACTION ±					
6	23	THREE PLACE DEC. ± .25mm [0.010] ANGULAR ±					
7	24	TITLE					
8	25	STORAGE DRAWER INSERT					
9	26	Littelfuse					
10	27	800 E. NORTHWEST HIGHWAY					
11	28	DES PLAINES, ILLINOIS 60016					
12	29	DRWG. NO					
13	30	D- 03540522Z					

LTR	REVISION	CHK.	APD.
A	06534 - RELEASED October 10, 94 <i>ges.</i>	<i>ges.</i>	<i>AM</i>
B	36988C - ADD METRIC DIM 7-19-95 <i>RFR</i>	<i>ges.</i>	<i>ges.</i>
C	37033D - CHANGE TITLE 8-19-95 <i>JCU</i>	<i>ges.</i>	<i>ges.</i>
D	000807ER - RE-INSTATE 10/09/09 <i>J.U.</i>		