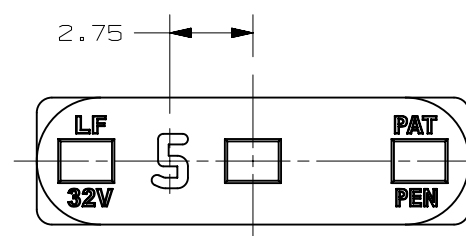


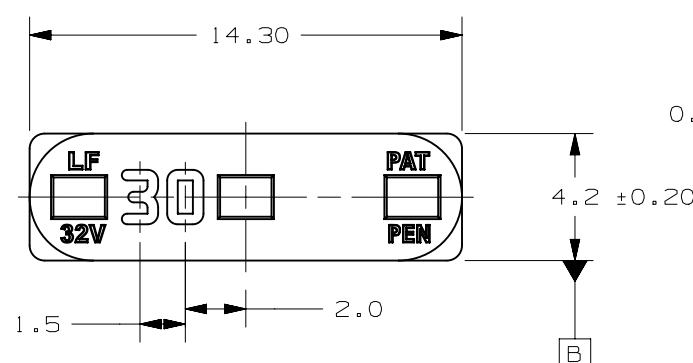
PART NUMBER	CURRENT RATING (A)	VOLTAGE RATING (V)	COLOR CODE	TERMINAL PLATING (SEE NOTE 4)
0337003.PX2S	3	32	VIOLET	SILVER
0337005.PX2S	5	32	TAN	SILVER
033707.5PX2S	7.5	32	BROWN	SILVER
0337010.PX2S	10	32	RED	SILVER
0337015.PX2S	15	32	BLUE	SILVER
0337900.PX2S	SHUNT	N/A	BLACK	SILVER

LTR	DATE	REVISION	DRW
A	1/18/13	50732BERA- RELEASE	JJB
B	5/20/13	508294ECA D- ADD MATL DESC	JJB
C	10/22/13	509673ECA - UPDATE NOTE 1	AGA
D	10SEP18	519681ECA- ADD 3A & CHG TERMINAL ANGLE TO POSITION	JJB
E	29NOV18	520172ECA- REMOVE TERMINAL POSITION AND ADD ANGLE	JJB
F	21/JAN/20	521912ECA- REMOVED SUGGESTED MATING CAVITIES	OPL

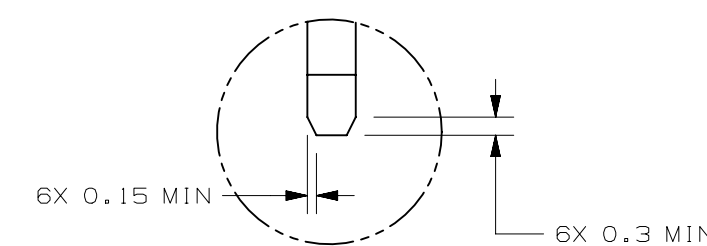
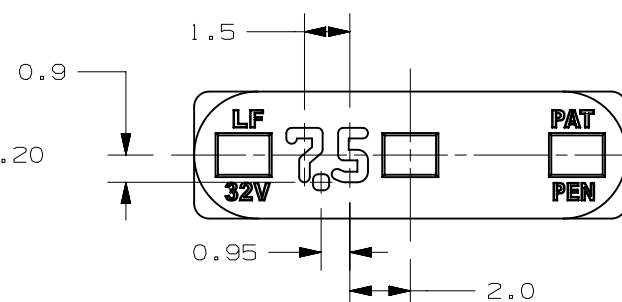
MARKING FOR SINGLE CHARACTER RATING STAMP



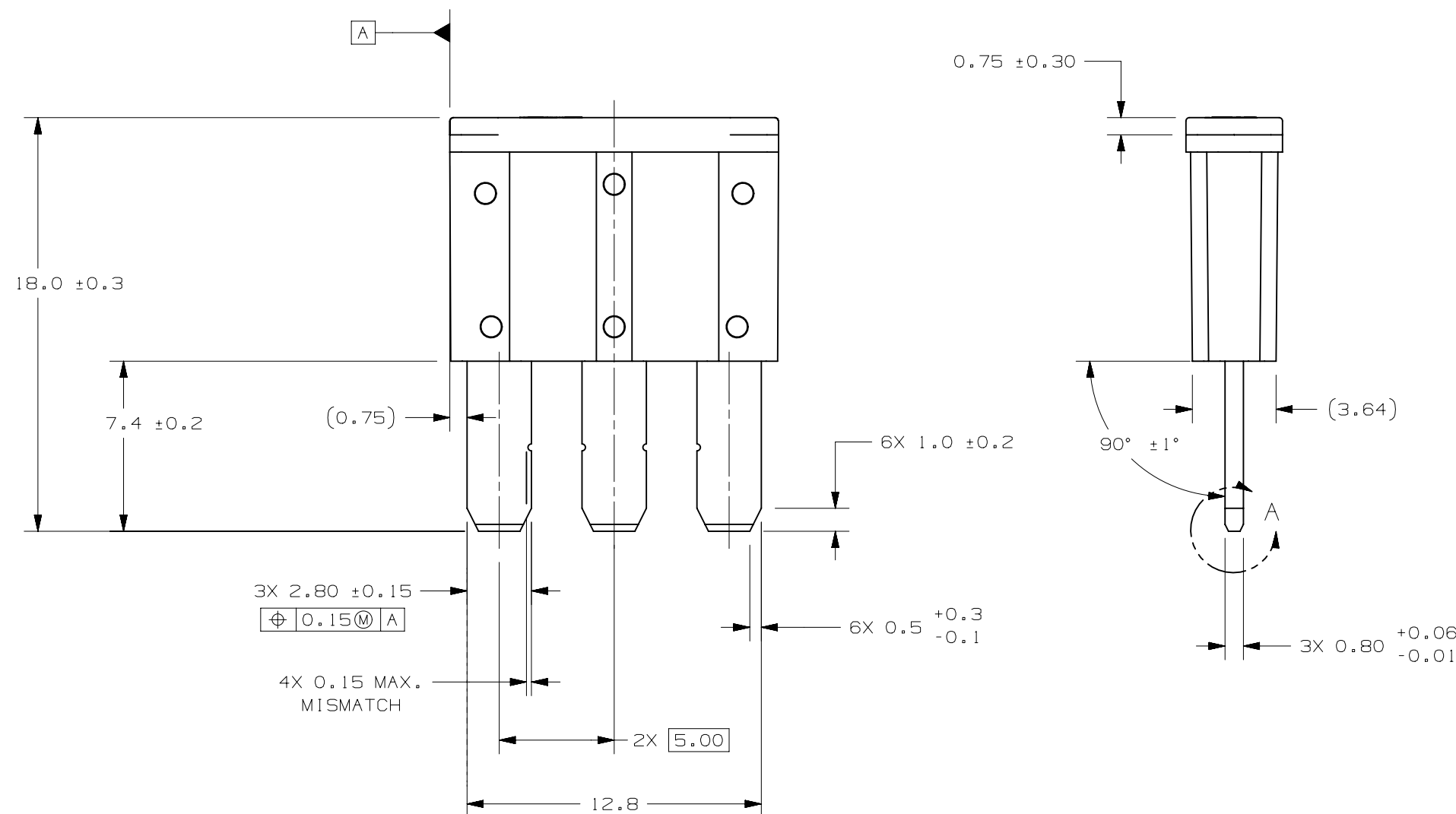
MARKING FOR DOUBLE CHARACTER RATING STAMP



MARKING FOR 7.5A RATING STAMP



DETAIL A SCALE 8:1



NOTES:

- AMPERAGE RATINGS MARKED IN WHITE WITH CUSTOM SIZE OCR CHARACTERS 1.8mm HIGH X 1.2mm WIDE. THE STROKE WIDTH IS 0.35mm. HEIGHT AND WIDTH ARE MEASURED FROM THE CHARACTER OVER ALL. SHUNT IS MARKED "ST".
- BODIES MOLDED IN COLORS PER CHART.
- FUSES SHALL MEET THE OPENING TIME CHARACTERISTICS SHOWN IN THE CHART.
- TERMINALS ARE PLATED SILVER PER CHART. EDGES OF TERMINALS ARE NOT PLATED.

% OF RATING	OPENING TIME (EXCEPT SHUNT)	
	MINIMUM	MAXIMUM
110	100 HOURS	-
135	0.75 SECONDS	120 SECONDS
160	0.30 SECONDS	50 SECONDS
200	0.15 SECONDS	5 SECONDS
350	0.04 SECONDS	0.50 SECONDS
600	0.02 SECONDS	0.10 SECONDS

UNLESS OTHERWISE SPECIFIED, DIMENSIONS ARE IN MILLIMETERS. DIMENSIONS IN BRACKETS [ ] ARE INCHES.					
UNLESS OTHERWISE SPECIFIED, DIMENSIONS DO NOT INCLUDE PLATING.					
⊙	DENOTES CRITICAL CHARACTERISTICS.				
CPK	DENOTES CPK DIMENSIONS, -MINIMUM CPK VALUE				
ST	DENOTES A CHARACTERISTIC THAT PROVIDES AN INDICATION OF PROCESS PERFORMANCE. PROCEDURE FOR MEASUREMENT AND TRACKING TO BE DEFINED IN LITTELFUSE INSPECTION INSTRUCTIONS				
CP	DENOTES CP DIMENSIONS, -MINIMUM CP VALUE MUST BE WITHIN THE DIMENSIONAL LIMITATIONS SHOWN ON DRAWING AND INITIALLY LOCATED TO ALLOW FOR MAXIMUM TOOL LIFE				
COPIES TO	MATL SPEC ELEMENT: Ag-PLATED Zn HOUSING: NYLON				
1 9 18	FINISH				
2 10 19	DRW JJB DATE 1/18/13 SCALE 4:1				
3 12 20	CHK JJB DATE 1/18/13 SUPER DR				
4 13 21					
5 14 23					
6 15 33					
7 16 43					
8 17 53					
TOLERANCES UNLESS OTHERWISE SPECIFIED (REF. ISO 2768-mK)					
DIMENSION	0.5 - 3	3 - 6	6 - 30	30 - 120	120 - 400
TOLERANCE	+0.1	+0.1	+0.2	+0.3	+0.5
3RD ANGLE PROJECTION	TITLE			MICRO3 V2 AUTOMOTIVE BLADE FUSE	
METRIC		Littelfuse		REVISION	DRWG. NO.
				F	OL-0337000.PX2S
		DES PLAINES, ILLINOIS 60016		OUTLINE	

METRIC

Littelfuse

REVISION F DRWG. NO. OL-0337000.PX2S OUTLINE

CAD GENERATED DRAWING - NO PENCIL CHANGES ALLOWED