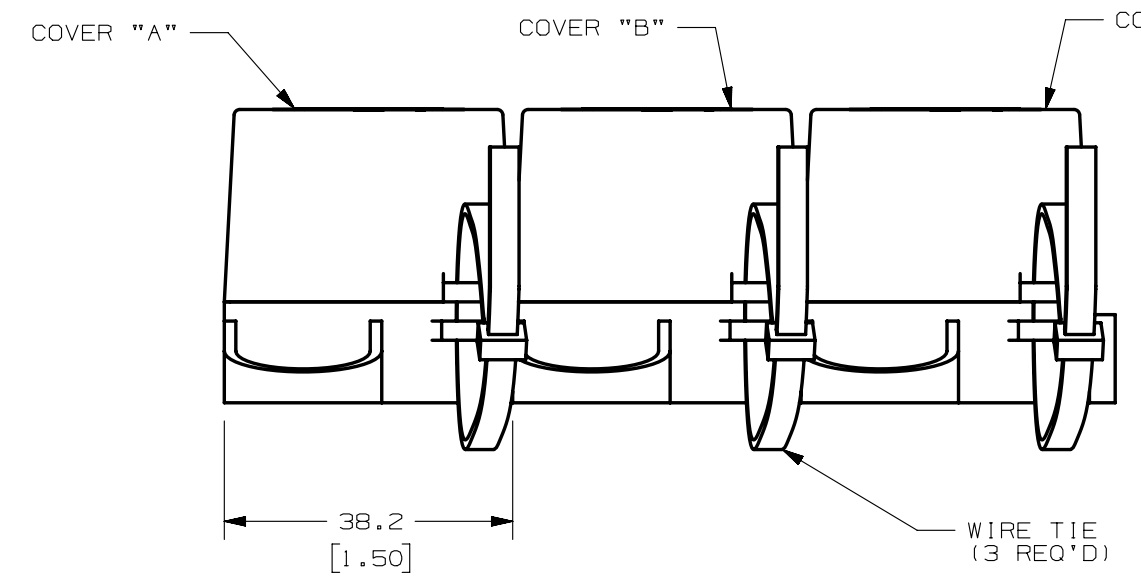
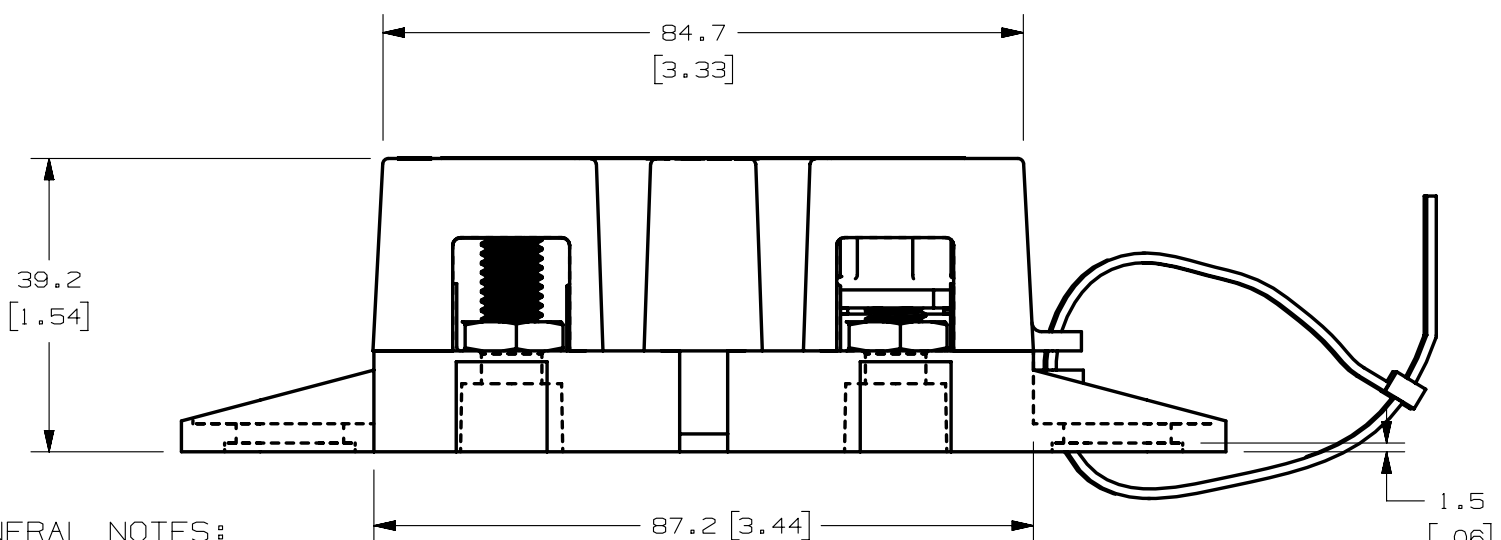
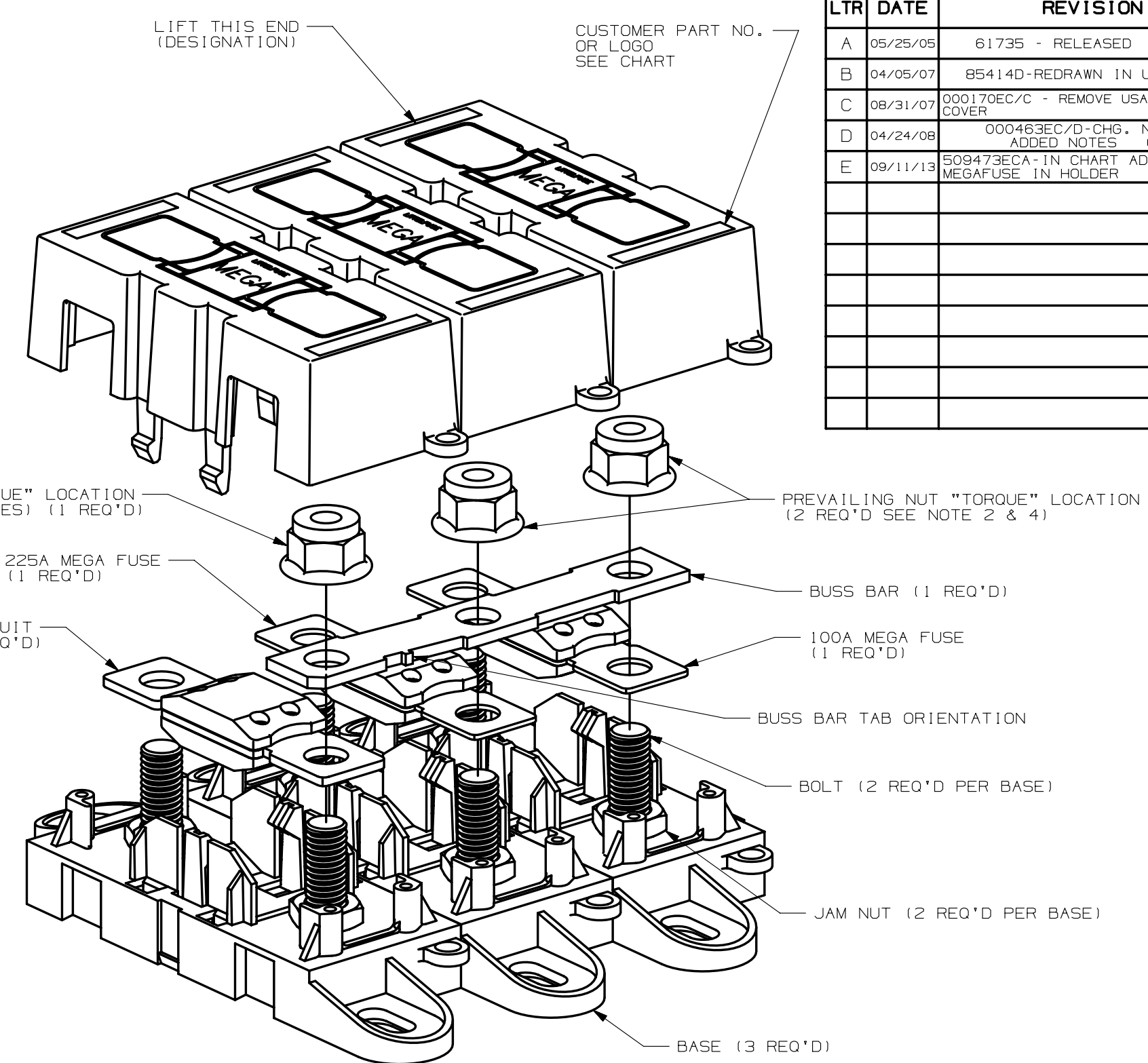
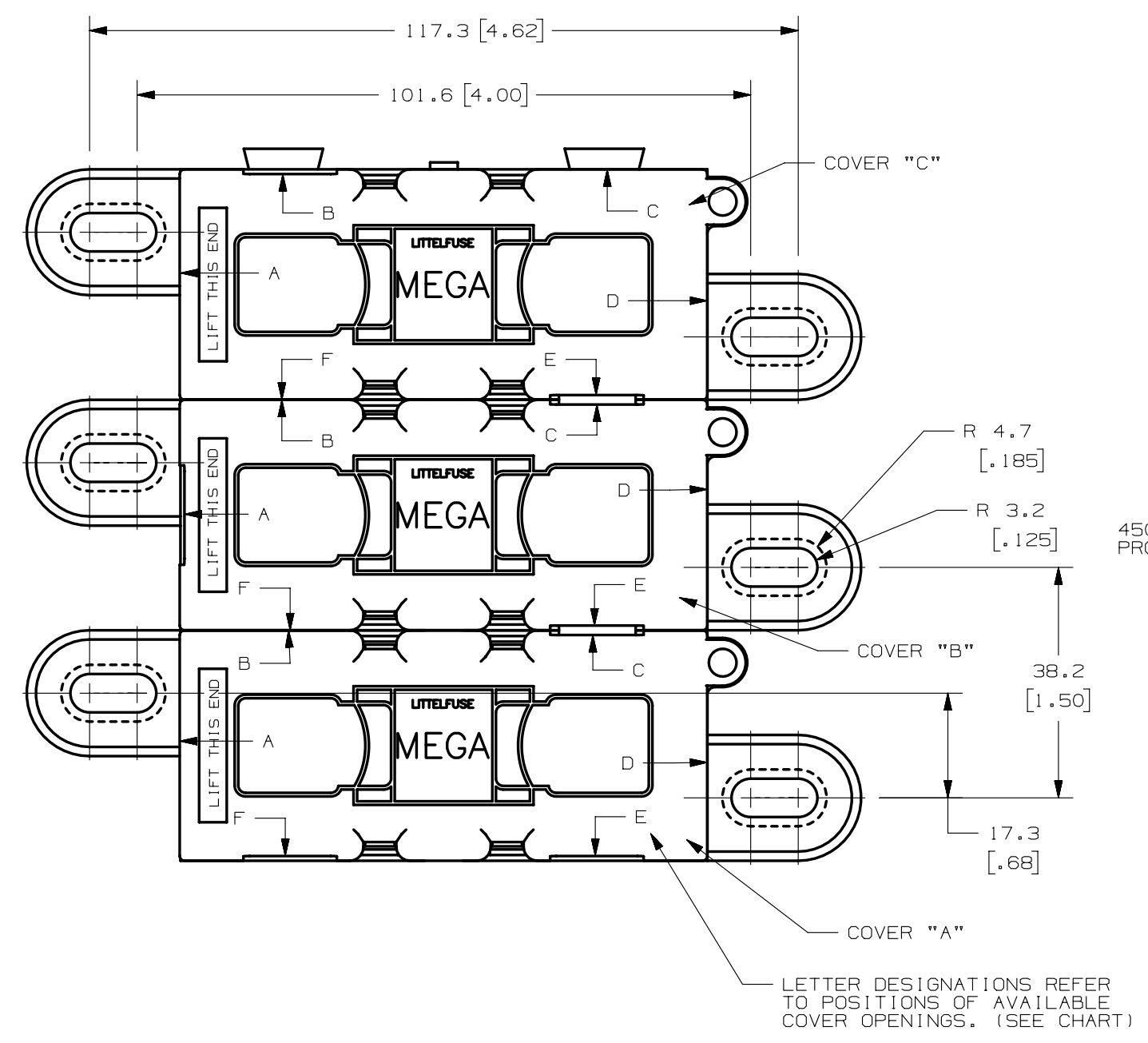


| COVER PART | COVER OPENING POSITION | MEGAFUSE IN HOLDER |
|------------|------------------------|--------------------|
| A | C E F | 0298450.ZXH |
| B | A C E | 0298225.ZXEH |
| C | B E | 0298100.ZXEH |

| LTR | DATE | REVISION | CHK | APD |
|-----|----------|---|------|-----|
| A | 05/25/05 | 61735 - RELEASED | GLAB | |
| B | 04/05/07 | 85414D-REDRAWN IN UG | GMB | |
| C | 08/31/07 | 000170EC/C - REMOVE USA FROM COVER | BRK | |
| D | 04/24/08 | 000463EC/D-CHG. NOTE 2 ADDED NOTES | GMB | |
| E | 09/11/13 | 509473ECA-IN CHART ADD COLUMN: MEGAFUSE IN HOLDER | OPL | |



GENERAL NOTES:

- COVER RETENTION TEST: MINIMUM FORCE OF 2 LBS. IS REQUIRED TO REMOVE COVER WHEN IT IS SUSPENDED UPSIDE DOWN. FORCE SHALL BE APPLIED THROUGH THE INNER HOLES (2) IN BASE. USE FIXTURE #T-C403 TO SUPPORT PART.
- TORQUE APPLIED TO ALL "TORQUE" LOCATIONS TORQUE REQUIREMENTS FOR THE HEX NUT USED TO SECURE THE BUSSBAR OR THE CUSTOMER RING TERMINAL TO THE MEGA FUSE TO BE:
8mm NUT - 12-18 NEWTON METERS [106-159 IN-LBS]
- HOLDER MEETS L/F VALIDATION TEST SPEC. VS-005002.
- FLANGED LOCKNUT TO MEET THE FOLLOWING CRITERIA:
FORD PART NO. W520202
FINISH: S437.

MATERIALS:

- * BODY - GLASS FILLED THERMOPLASTIC
COLOR - BLACK
- * COVER - THERMOPLASTIC
COLOR - BLACK
- * WIRE TIE - THERMOPLASTIC
COLOR - BLACK
- * STUDS & NUTS - M8 X 1.25 STEEL ZINC PLATE WITH TRIVALENT CHROMATE, LEACHED AND SEALED, INTEGRAL TORQUE CONTROL LUBRICANT FINISH, (MEETS 96 HR. ASTM STD. B-117 SALT SPRAY REQ.)

- MANUALLY ASSEMBLE FLANGED PREVAILING NUT ONTO STUD UP TO THE BOTTOM OF THE PLASTIC INSERT IN THE NUT, FOR ALL "NO TORQUE" LOCATIONS.

| NO | COMPONENT NO | DESCRIPTION | QTY/M | U/M |
|--|---|------------------------|-----------------------|----------|
| BILL OF MATERIAL | | | | |
| UNLESS OTHERWISE SPECIFIED, DIMENSIONS ARE IN MILLIMETERS. DIMENSIONS IN BRACKETS [] ARE INCHES | | | | |
| UNLESS OTHERWISE SPECIFIED, DIMENSIONS DO NOT INCLUDE PLATING. | | | | |
| ⊙ | DENOTES CRITICAL CHARACTERISTICS. | | | |
| CPK | DENOTES CPK DIMENSIONS, -MINIMUM CPK VALUE | | | |
| ST | DENOTES A CHARACTERISTIC THAT PROVIDES AN INDICATION OF PROCESS PERFORMANCE. PROCEDURE FOR MEASUREMENT AND TRACKING TO BE DEFINED IN LITTELFUSE INSPECTION INSTRUCTIONS | | | |
| CP | DENOTES CP DIMENSIONS, -MINIMUM CP VALUE MUST BE WITHIN THE DIMENSIONAL LIMITATIONS SHOWN ON DRAWING AND INITIALLY LOCATED TO ALLOW FOR MAXIMUM TOOL LIFE | | | |
| COPIES TO | | MATL SPEC | | |
| 1 | 9 | 18 | FINISH | |
| 2 | 10 | 19 | | |
| 3 | 12 | 20 | | |
| 4 | 13 | 21 | DRW | GLAB |
| 5 | 14 | 23 | DATE | 05/25/05 |
| 6 | 15 | 33 | SCALE | 1:1 |
| 7 | 16 | 43 | CHK | DATE |
| 8 | 17 | 53 | APPD | DATE |
| | | | FINSH | GOOD WT |
| | | | GRAMS/PIECE | |
| TOLERANCE UNLESS OTHERWISE SPECIFIED | | | | |
| ONE PLACE DEC | | ±.3 | THREE PLACE DEC ±.100 | |
| TWO PLACE DEC | | ±.25 | ANGULAR ±.1° | |
| 3RD ANGLE PROJECTION | | TITLE | | |
| | | 3 POLE MEGA HOLDER FOR | | |
| | | 450A, 225A & 100A | | |
| Littelfuse | | REVISION | DRWG. NO. | OUTLINE |
| | | E | 02983004ZXT | |

METRIC

CAD GENERATED DRAWING - NO PENCIL CHANGES ALLOWED