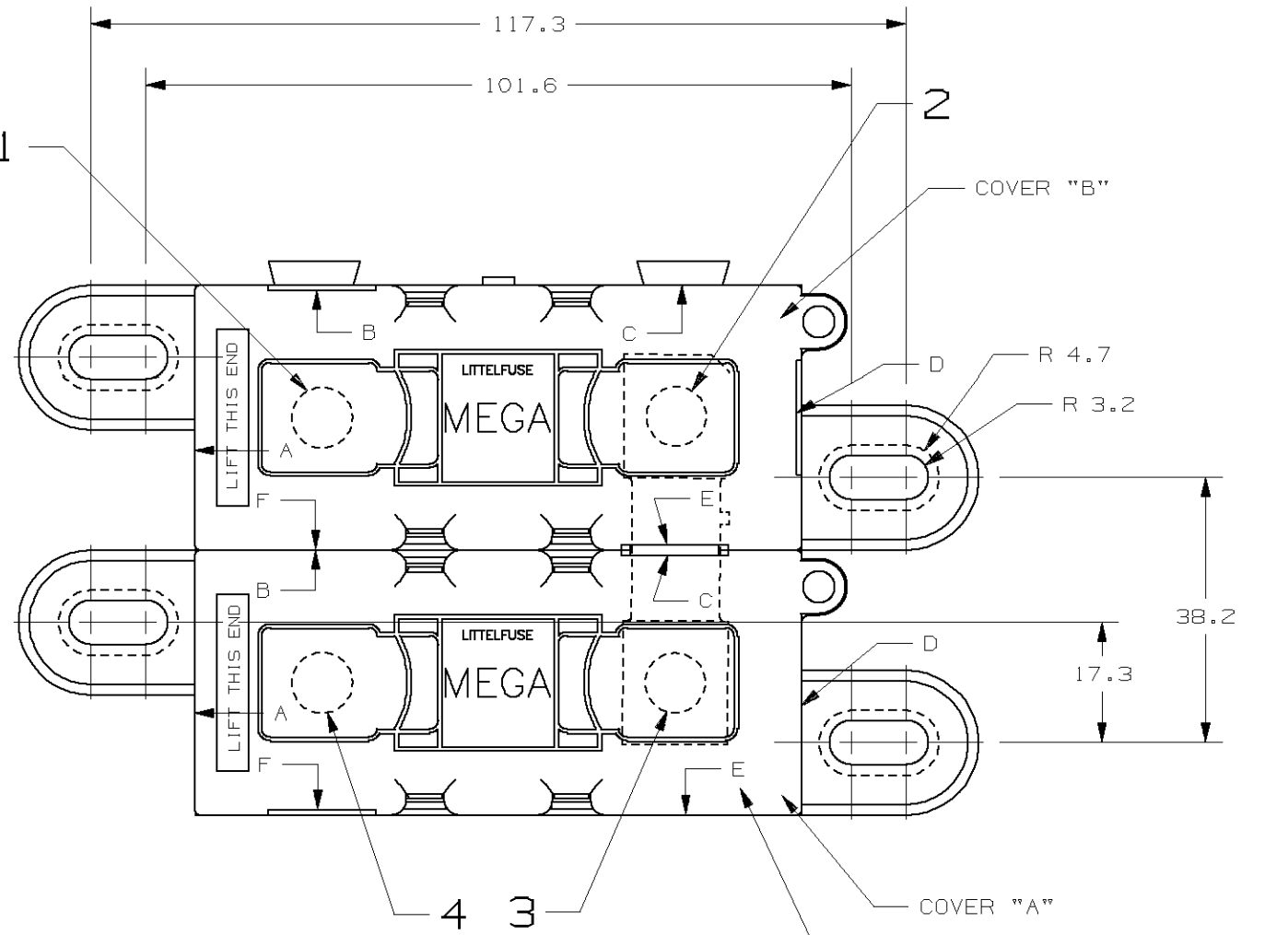


COVER "A" OPENING POSITION	COVER "B" OPENING POSITION	PREVAILING NUT LOCATION	TORQUE LOCATION (NOTE 3)	"NO TORQUE" LOCATION (NOTE 5)
C F	B D E	1 2 3	3	1 2

LTR	DATE	REVISION	CHK	APD
A	06/27/05	61752 - RELEASE D.GLAB		
B	07/28/05	844500-RENUMBER AND REVISE NOTES 2-6, ADD NOTE 5, ADD (2) NUTS TO TOP VIEW, REVISE CHART MTS		
C	09/22/05	84539B-REMOVED PREVAILING FEATURE FROM (3) NUTS, REVISE NOTES 2-6 DJG		
D	04/02/07	85414D-REDRAWN IN UG GMB		
E	08/31/07	000170EC/C - REMOVE USA FROM COVER BRK		
F	04/24/08	000463EC/D-CHG, NOTE 3 GMB		

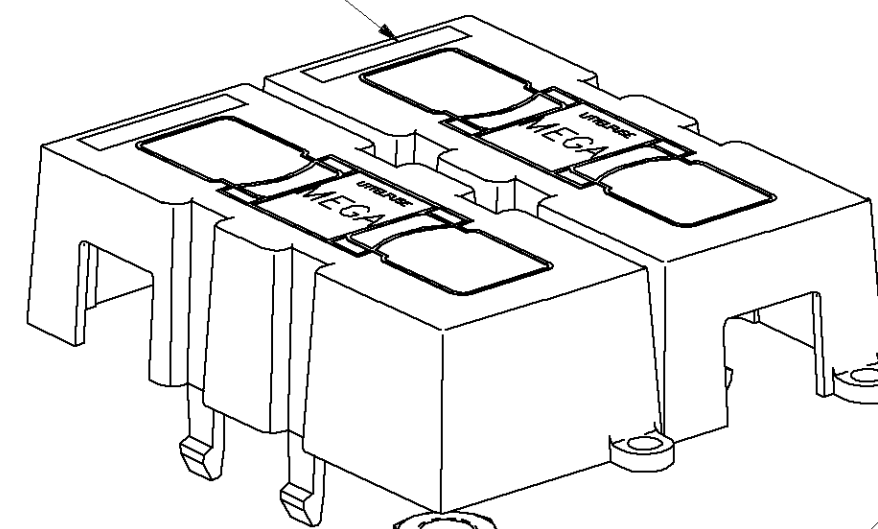
BOLD NUMBER DESIGNATION REFERS TO NUT & TORQUE LOCATION (SEE CHART)



LETTER DESIGNATIONS REFER TO POSITIONS OF AVAILABLE COVER OPENINGS. (SEE CHART)

LIFT THIS END (DESIGNATION)

400A SHORT CIRCUIT PROTECTOR (1 REQ'D)



FLANGED NUT (3 REQ'D SEE NOTE 2) (SEE CHART FOR REQUIRED TORQUE)

BUSS BAR TAB ORIENTATION

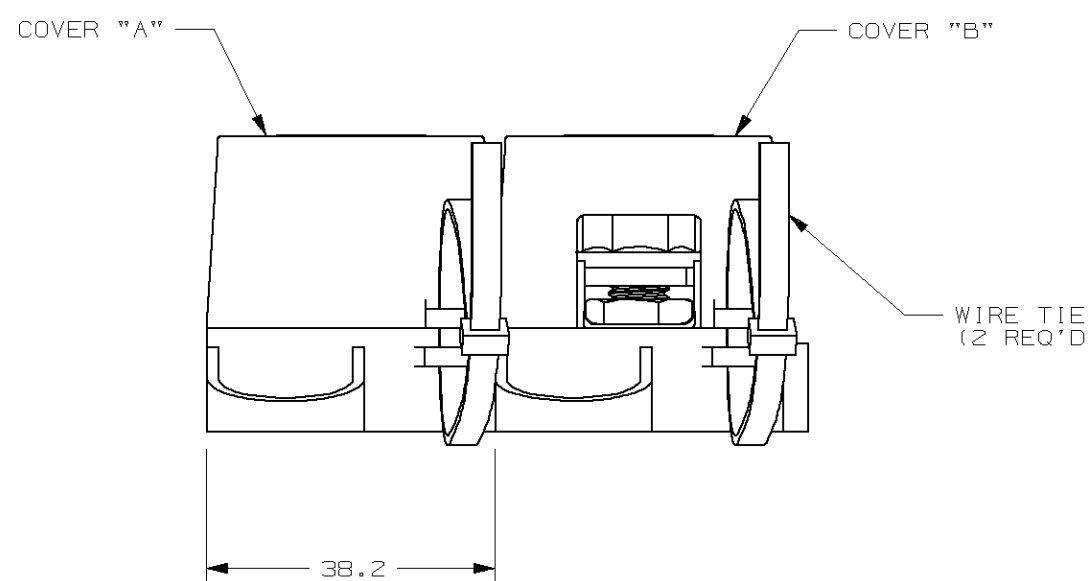
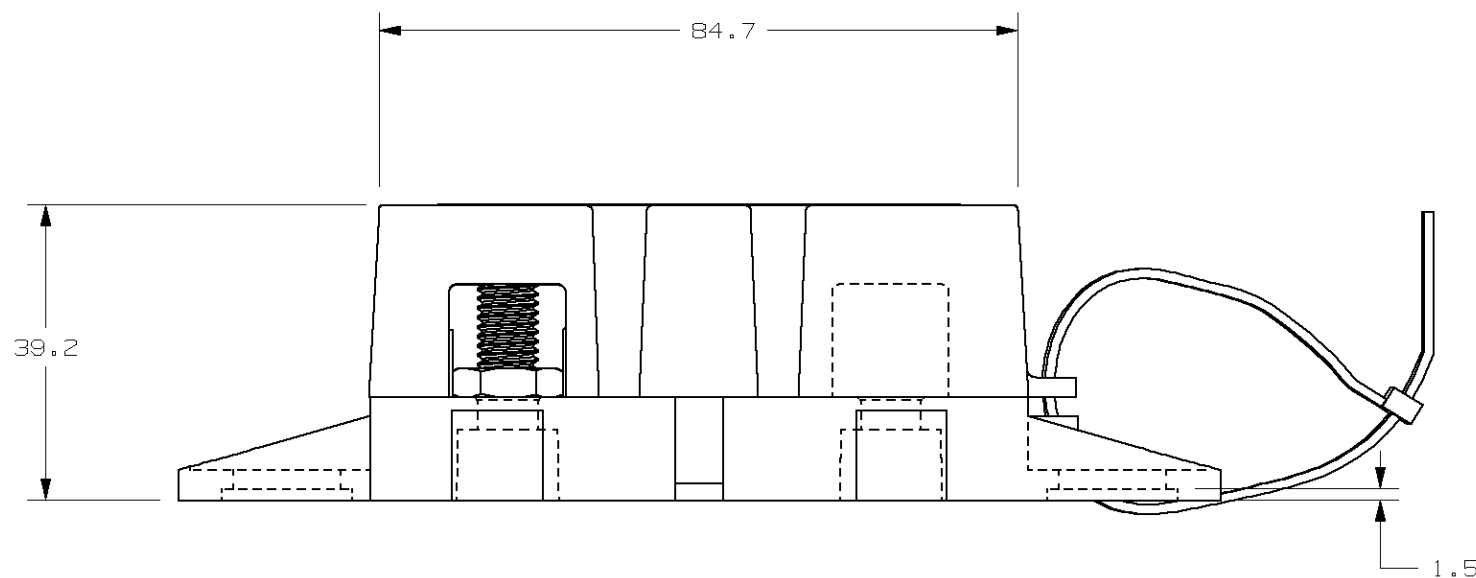
BUSS BAR (1 REQ'D)

250A MEGA FUSE (1 REQ'D)

BOLT (4 REQ'D)

JAM NUT (4 REQ'D)

BASE (2 REQ'D)



**GENERAL NOTES:**

- COVER RETENTION TEST: MINIMUM FORCE OF 2 LBS. IS REQUIRED TO REMOVE COVER WHEN IT IS SUSPENDED UPSIDE DOWN. FORCE SHALL BE APPLIED THROUGH THE INNER HOLES (2) IN BASE. USE FIXTURE #T-C403 TO SUPPORT PART.
- FLANGED NUT TO MEET THE FOLLOWING CRITERIA: FORD PART NO. W520413 FINISH: S437.
- TORQUE APPLIED AS INDICATED IN CHART TORQUE REQUIREMENTS FOR THE HEX NUT USED TO SECURE THE BUSSBAR OR THE CUSTOMER RING TERMINAL TO THE MEGA FUSE TO BE:  
8mm NUT - 12-18 NEWTON METERS [ 106-159 IN-LBS ]
- L/F VALIDATION TEST SPEC. VS-005005.
- MANUALLY ASSEMBLE FLANGED NUT ONTO STUD AND FINGER TIGHTEN ANYWHERE BELOW TOP OF STUD, FOR ALL "NO TORQUE" LOCATIONS

**6. MATERIALS:**

- \* BODY - GLASS FILLED THERMOPLASTIC  
COLOR - BLACK
- \* COVER - THERMOPLASTIC  
COLOR - BLACK
- \* WIRE TIE - THERMOPLASTIC  
COLOR - BLACK
- \* STUDS & NUTS - M8 X 1.25 STEEL  
ZINC PLATE WITH TRIVALENT CHROMATE, LEACHED AND SEALED,  
INTEGRAL TORQUE CONTROL LUBRICANT FINISH  
(MEETS 96 HR. ASTM STD. B-117 SALT SPRAY REQ.)

NO	COMPONENT NO	DESCRIPTION	QTY/M	U/M
-	-	-	-	-
-	-	-	-	-
-	-	-	-	-

**BILL OF MATERIAL**

UNLESS OTHERWISE SPECIFIED, DIMENSIONS ARE IN MILLIMETERS. DIMENSIONS IN BRACKETS [ ] ARE INCHES

UNLESS OTHERWISE SPECIFIED, DIMENSIONS DO NOT INCLUDE PLATING.

⊙	DENOTES CRITICAL CHARACTERISTICS.
CPK	DENOTES CPK DIMENSIONS. -MINIMUM CPK VALUE
ST	DENOTES A CHARACTERISTIC THAT PROVIDES AN INDICATION OF PROCESS PERFORMANCE. PROCEDURE FOR MEASUREMENT AND TRACKING TO BE DEFINED IN LITTELFUSE INSPECTION INSTRUCTIONS
CP	DENOTES CP DIMENSIONS. -MINIMUM CP VALUE MUST BE WITHIN THE DIMENSIONAL LIMITATIONS SHOWN ON DRAWING AND INITIALLY LOCATED TO ALLOW FOR MAXIMUM TOOL LIFE

COPIES TO	MATL SPEC
1 9 18	FINISH
2 10 19	
3 12 20	
4 13 21	DRW GLAB DATE 06/27/05 SCALE 1:1
5 14 23	CHK DATE SUPER DR
6 15 33	APPD DATE FINSH GOOD WT
7 16 43	
8 17 53	

TOLERANCE UNLESS OTHERWISE SPECIFIED  
ONE PLACE DEC +/- .3 THREE PLACE DEC +/- .100  
TWO PLACE DEC +/- .25 ANGULAR +/- 1°

TITLE	DRWG. NO.	OUTLINE
DUAL MEGAFUSE HOLDER FOR 400A & 250A	F	02982008ZXT

<b>Littelfuse</b> DES PLAINES, ILLINOIS 60016	REVISION	DRWG. NO.	OUTLINE
	F	02982008ZXT	

METRIC

CAD GENERATED DRAWING - NO PENCIL CHANGES ALLOWED