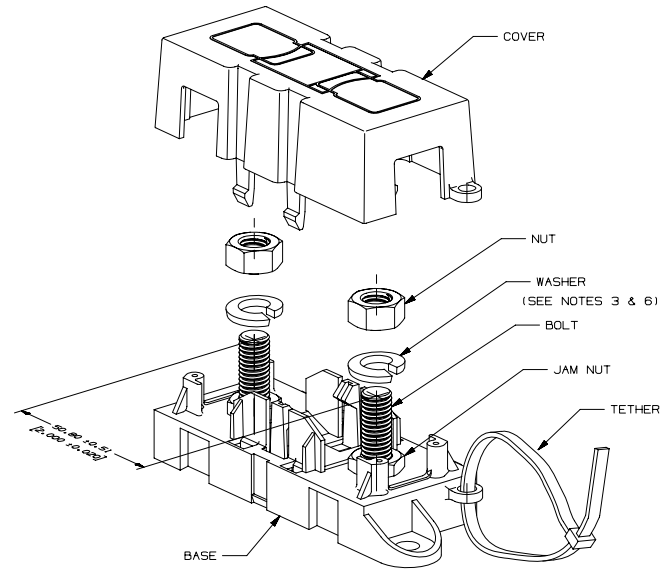
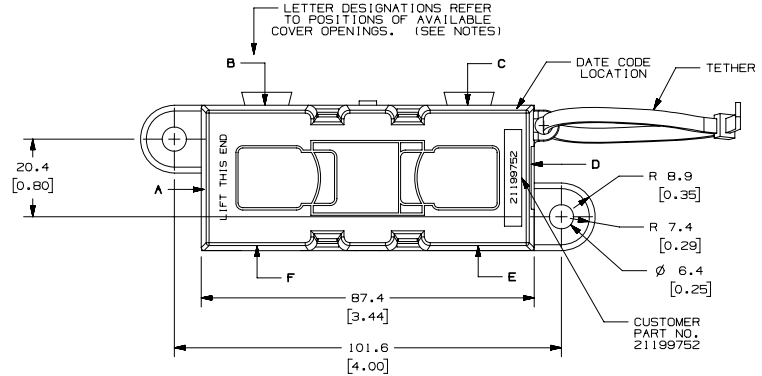
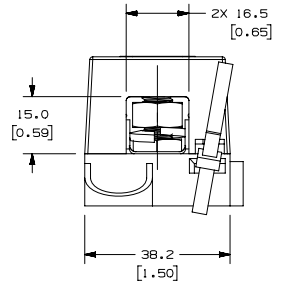
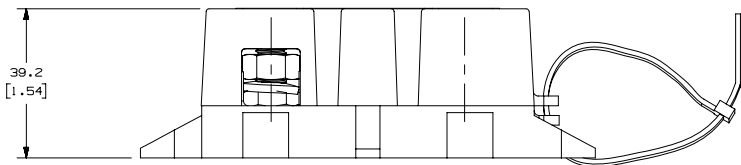


LTR	DATE	REVISION	CHK	APD
A	06/16/10	SA340-RELEASE	OPL	



GENERAL HOLDER CONSTRUCTION
(REF ONLY)



- NOTE:
- THIS VERSION WITH D & F COVER OPENINGS.
 - NO FUSE AVAILABLE FOR THIS PART NUMBER.
 - NUTS TO BE ASSEMBLED BELOW STUD END NOT MORE THAN FINGERTIGHT WASHERS & HEX NUTS NOT TO BE ASSEMBLED TO BASE.
 - COVER RETENTION TEST: MINIMUM FORCE OF 2 LBS. REQUIRED TO REMOVE COVER WHEN IT IS SUSPENDED UPSIDE DOWN. FORCE SHALL BE APPLIED THROUGH THE INNER HOLES (2) IN BASE. USE FIXTURE #T-C403 TO SUPPORT PART.
 - MATERIALS:
 - BODY - GLASS FILLED THERMOPLASTIC
COLOR - BLACK
 - COVER - THERMOPLASTIC
COLOR - BLACK
 - WIRE TIE - THERMOPLASTIC
COLOR - BLACK
 - STUDS & NUTS - M8 X 1.25 STEEL
LOCKWASHERS ARE ZINC PLATED WITH TRIVALENT CHROMATE, LEACHED & SEALED, INTEGRAL TORQUE CONTROL LUBRICANT FINISH. (MEETS 96 HR. ASTM STD. B-117 SALT SPRAY REQ.)
 - TORQUE REQUIREMENTS FOR THE HEX NUT USED TO SECURE THE CUSTOMER RING TERMINAL TO THE MEGA FUSE TO BE: 8mm NUT - 12-18 NEWTON METERS (106-159 IN-LBS)
THIS TORQUE IS NOT APPLIED IN THE FACTORY.
 - HOLDER MEETS L/F VALIDATION TEST SPEC. VS-005002.
 - HOLDER MOUNTING TORQUE - 5 NEWTON METERS (44 IN-LBS) MAX.

NO	COMPONENT NO	DESCRIPTION	QTY/M	U/M
-				
-				
-				

BILL OF MATERIAL

UNLESS OTHERWISE SPECIFIED, DIMENSIONS ARE IN MILLIMETERS. DIMENSIONS IN BRACKETS () ARE INCHES.

UNLESS OTHERWISE SPECIFIED, DIMENSIONS DO NOT INCLUDE PLATING.

⊙	DENOTES CRITICAL CHARACTERISTICS.
CPK	DENOTES CPK DIMENSIONS. -MINIMUM CPK VALUE
ST	DENOTES A CHARACTERISTIC THAT PROVIDES AN INDICATION OF PROCESS PERFORMANCE. PROCEDURE FOR MEASUREMENT AND TRACKING TO BE DEFINED IN LITTELFUSE INSPECTION INSTRUCTIONS
CP	DENOTES CP DIMENSIONS. -MINIMUM CP VALUE MUST BE WITHIN THE DIMENSIONAL LIMITATIONS SHOWN ON DRAWING AND INITIALLY LOCATED TO ALLOW FOR MAXIMUM TOOL LIFE

COPIES TO	MATL SPEC
1 9 18	
2 10 19	FINISH
3 12 20	
4 13 21	DRW OPL DATE 06/16/10 SCALE FULL
5 14 23	CHK DATE SUPER DR
6 15 33	
7 16 43	APPD DATE FINSH GOOD WT
8 17 53	

TOLERANCES UNLESS OTHERWISE SPECIFIED (REF. ISO 2768-MK1)

DIMENSION	0.5 - 3	3 - 6	6 - 30	30 - 120	120 - 400
TOLERANCE	±0.1	±0.1	±0.2	±0.3	±0.5

3RD ANGLE PROJECTION

METRIC ASSEMBLY

MEGAFUSE HOLDER

Littelfuse	REVISION	DRWG. NO.	OUTLINE
DES PLAINES, ILLINOIS 60018	A	02981033ZXT.V3P	SERIES

CAD GENERATED DRAWING - NO PENCIL CHANGES ALLOWED