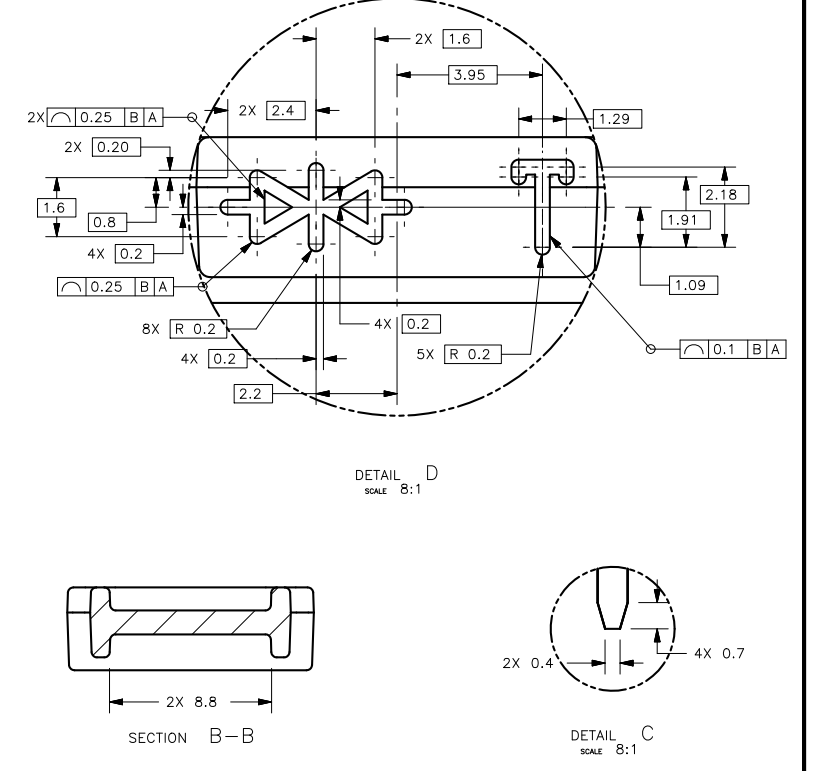
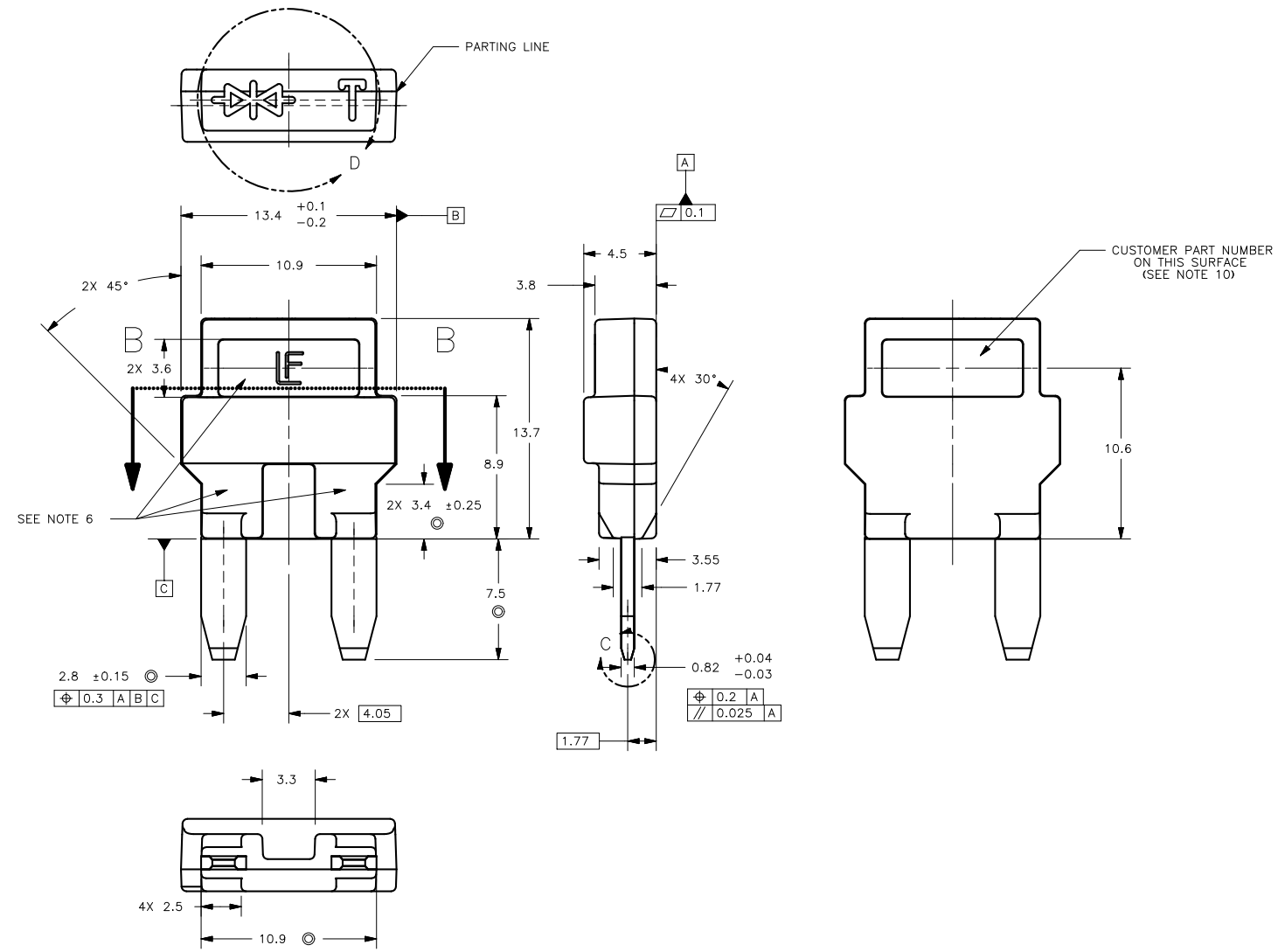


PART NUMBER	CUSTOMER PART NUMBER	PEAK PULSE POWER DISSIPATION (t=1ms) [W]	STEADY-STATE POWER DISSIPATION [W]	REVERSE STANDOFF VOLTAGE [V]	BREAKDOWN VOLTAGE [V]	MAXIMUM CLAMPING VOLTAGE [V]	MAXIMUM PEAK PULSE CURRENT [A]	MAXIMUM REVERSE LEAKAGE CURRENT [micro-Amperes]	BI-DIRECTIONAL / UNI-DIRECTIONAL
02400117P	8200 538 946	1100	6.5	18.0	37.1 - 41.0	53.9	22	5	BI-DIRECTIONAL

LTR	DATE	REVISION	CHK	APD
A	9/1/06	82097 RELEASE	JJB	
B	01/02/07	85232C- ADD LASER MARK & PN INFO	JJB	
C	03/29/09	001080EC B- UPDATE SPECS	JJB	



- NOTES:
- ALL UNDESIGNATED RADII SHALL BE 0.4mm MAXIMUM.
 - MAXIMUM ALLOWABLE BURR ON METAL PARTS SHALL BE 0.1mm.
 - MAXIMUM ALLOWABLE FLASH ON PLASTIC SHALL BE 0.15mm.
 - TERMINAL FACES SHALL BE PLATED WITH 0.000150 to 0.000250" WITH Sn. EDGES MAY BE UNPLATED. DIMENSIONS SHOWN AFTER PLATING.
 - DRAFT OF 3° MAXIMUM ALLOWED PER SIDE STARTING AT PARTING LINE.
 - EJECTOR PINS ALLOWED ON THE SURFACES SHOWN.
 - ALL PARTS AND MATERIALS USED IN THIS ASSEMBLY SHALL BE Pb FREE.
 - OPERATING TEMPERATURE RANGE: -40 to 125 °C.
 - MARK TOP SURFACE IN WHITE AS SHOWN.
 - UNLESS OTHERWISE NOTED, ALL LINE WIDTHS SHALL BE 0.2 mm.
 - CUSTOMER PART NUMBER SHALL BE LASER MARKED IN THE LOCATION SHOWN, CHARACTER HEIGHT SHALL BE 1.0 TO 1.25mm.
 - DIODE ELECTRICAL PARAMETERS PER CHART.
 - BLADES SHALL BE CONSTRUCTED OF Cu ALLOY.
 - HOUSING TO BE BLACK ELECTRICAL GRADE THERMOSET. HOUSING MATERIAL MUST MEET RENAULT D45 17307--A.
 - MATES WITH TERMINAL 12092087 OR EQUIVALENT.
 - MUST CONFORM TO RENAULT VALIDATION SPECIFICATION NT 2335/65660/2005.
 - OCR CHARACTER "T" SIZE 1A (2.59mm HIGH). DEFINITION IS SIMILAR TO ANSI X3.17-1981 (R2002) AND ANSI X3.99-1983 (R2002).

UNLESS OTHERWISE SPECIFIED, DIMENSIONS ARE IN MILLIMETERS. DIMENSIONS IN BRACKET [] ARE INCHES.			
UNLESS OTHERWISE SPECIFIED, DIMENSIONS DO NOT INCLUDE PLATING.			
⊙	DENOTES CRITICAL CHARACTERISTICS.		
CPK	DENOTES CPK DIMENSIONS, -MINIMUM CPK VALUE		
ST	DENOTES A CHARACTERISTIC THAT PROVIDES AN INDICATION OF PROCESS PERFORMANCE. PROCEDURE FOR MEASUREMENT AND TRACKING TO BE DEFINED IN LITTELFUSE INSPECTION INSTRUCTIONS		
CP	DENOTES CP DIMENSIONS, -MINIMUM CP VALUE MUST BE WITHIN THE DIMENSIONAL LIMITATIONS SHOWN ON DRAWING AND INITIALLY LOCATED TO ALLOW FOR MAXIMUM TOOL LIFE		
COPIES TO	MATL SPEC		
1 9 18	SEE BOM		
2 10 19	FINISH		
3 12 20	SEE NOTES		
4 13 21	DRW	JJB	DATE 9/1/06 SCALE 4:1
5 14 23	CHK		DATE SUPER DR
6 15 33	APPD		DATE FINISH GOOD WT
7 16 43			GRAMS/PIECE
8 17 53			
TOLERANCE UNLESS OTHERWISE SPECIFIED			
ONE PLACE DEC +/- .3		FRACTION +/-	
TWO PLACE DEC +/- .15		ANGULAR +/- .2°	
3RD ANGLE PROJECTION	TITLE	MINI TVS DIODE ASSEMBLY OUTLINE	
Littelfuse	REVISION	DRWG. NO.	0L-02400117P
DES PLAINES, ILLINOIS 60018	C		OUTLINE

METRIC
ALL DIMENSIONS IN mm
UNLESS OTHERWISE SPECIFIED

CAD GENERATED DRAWING - NO PENCIL CHANGES ALLOWED