

# 08097367 & 08097467 BATTERY DISCONNECT SWITCHES

250A • SPST • IP65/IPX7 • M10 Studs • ADR Electronic/Electrical bistable remote control



## Description

This is the single-pole bi-stable version of the ADR electronic battery disconnect switches.

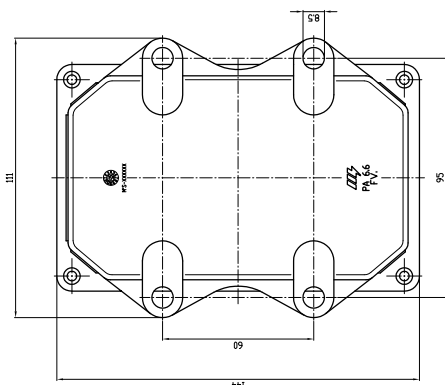
It protects the vehicle in potentially explosive environments in case of emergency according the European Dangerous Goods Transport Regulation and is operated with an emergency ON-OFF switch.

Switches are bi-stable with zero consumption, that is, the device absorbs current only during the commuting phase when the electrical circuit is switched ON or OFF and no further consumption to keep the ON or OFF status.

## Features/Benefits

- 250A continuous current rating
- Waterproof IP65/IPX7

## Mounting Diagram



## Specifications

|                                |                  |
|--------------------------------|------------------|
| <b>Max Operating Voltage:</b>  | 12V DC<br>24V DC |
| <b>Max Continuous Current:</b> | 250A             |
| <b>Intermittent Current:</b>   | 2500A at 3 sec   |
| <b>Operating Temp:</b>         | -40 °C to +85 °C |
| <b>Ingress Protection:</b>     | IP65/IPX7        |
| <b>Terminals:</b>              | Tin-plated Brass |
| <b>Terminals Nuts:</b>         | M10 (brass)      |

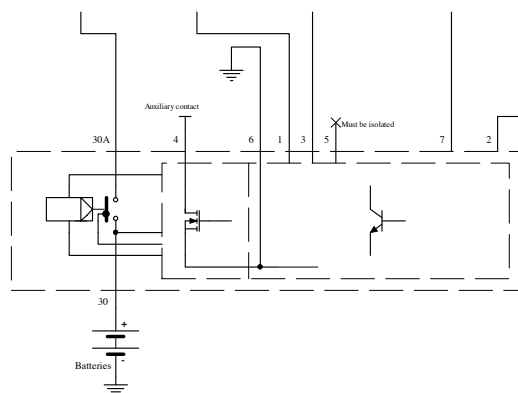
## Applications

- Heavy trucks
- Buses
- Construction
- Commercial vehicles
- Ambulances
- Material Handling

## Web Resources

Download technical resources at:  
[littelfuse.com/ManualBatterySwitches](http://littelfuse.com/ManualBatterySwitches)

## Electrical Diagram



## Ordering Information

| PART NUMBER | VOLTAGE | AMPERAGE | CIRCUITRY | MOUNTING  | INGRESS   | CONTACT TERMINALS    | NOTES   |
|-------------|---------|----------|-----------|-----------|-----------|----------------------|---|
| 08097367    | 12V DC  | 250A     | SPST      | Bolt-Down | IP65/IPX7 | M10 Tin-plated brass | + disconnection 30 sec.<br>0.5-10-80 sec. Emergency CUT-OFF |
| 08097467    | 24V DC  | 250A     | SPST      | Bolt-Down | IP65/IPX7 | M10 Tin-plated brass | + disconnection 30 sec.<br>0.5-10-80 sec. Emergency CUT-OFF |

# 08097367 & 08097467 BATTERY DISCONNECT SWITCHES

## Dimensions in millimeters

