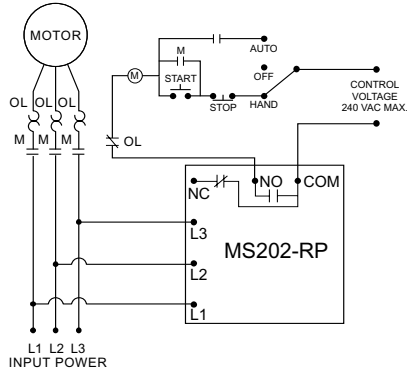


# **INSTALLATION INSTRUCTIONS FOR SYMCOM'S MOTORSAVER MODEL 202-RP-575**

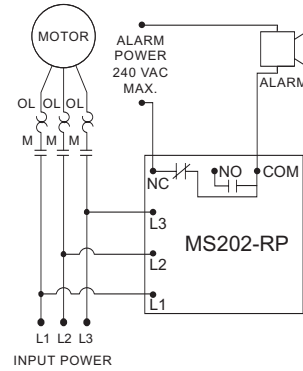
**BE SURE POWER IS DISCONNECTED PRIOR TO INSTALLATION!!  
FOLLOW NATIONAL, STATE AND LOCAL CODES!**

## **CONNECTIONS**

1. Mount the MotorSaver in a convenient location in or near the motor control panel using a 1/4" socket head cap screw (customer supplied).  
If the location is wet or dusty, then the MotorSaver should be mounted in a NEMA 4 or 12 enclosure.
2. Connect the three lines of the motor's three-phase power supply to L1, L2 and L3 using insulated 1/4" female, UL recognized quick connectors. (see Figure No. 1).
3. Connect the output relay to the circuitry to be controlled using insulated 1/4" female, UL recognized quick connectors. (see Figure No. 1).



(A) To control a motor: Connect the normally open contact in series with the magnetic coil of the motor starter as shown.



(B) To sound an alarm: Connect the normally closed contact in series with the alarm as shown.

**Figure No. 1:Typical Wiring Diagram**

## **POWER-UP**

Turn on the power to the motor.  
During the restart delay the STATUS LIGHT will flash green.  
After the RESTART DELAY, the MotorSaver will energize its output contacts and the STATUS LIGHT will turn solid green.  
**Congratulations!!! You have just installed the finest motor protection available!**

## **STATUS LIGHT**

CONDITION	LIGHT OPERATION
Run	Solid Green
Restart Delay	Flashing Green
Reverse Phase	Flashing Red

## **TROUBLESHOOTING**

SYMPTOM	LIGHT PATTERN	SOLUTION
No lights are on. The unit seems completely dead.	NA	Measure the three line-to-line voltages. If any of the voltages are below 450 VAC, the MotorSaver does not have enough power to operate its internal electronics. This may occur on a single-phased system. If the voltages are correct, call SymCom @ 1-800-843-8848.
Red light is blinking on initial power up.		Turn off the three-phase power. Swap any two leads powering the MotorSaver:L1, L2 or L3. You have a 50-50 chance of connecting L1, L2 and L3 up correctly the first time. Turn on the three-phase power.
Red light is blinking after the motor has been previously running.		The incoming lines have been reverse phased. Swap any two incoming power lines to the magnetic contactor.
Green light blinks but motor does not start.		The MotorSaver is in restart delay.
Green light is on steady but motor does not start.		The MotorSaver is in run mode. Ensure other control devices are allowing the motor to start. Check control circuit for loose wires or malfunctioning switches.

II-202-575-RP-B

## **⚡ DANGER! ⚡**



**HAZARDOUS VOLTAGES MAY BE PRESENT DURING INSTALLATION.**

**Electrical shock can cause death or serious injury.**

**Installation should be done by qualified personnel following all national, state and local electrical codes.**




**www.SymCom.com**

*... your electronic control & protection specialists*

222 Disk Drive, Rapid City, SD 57701

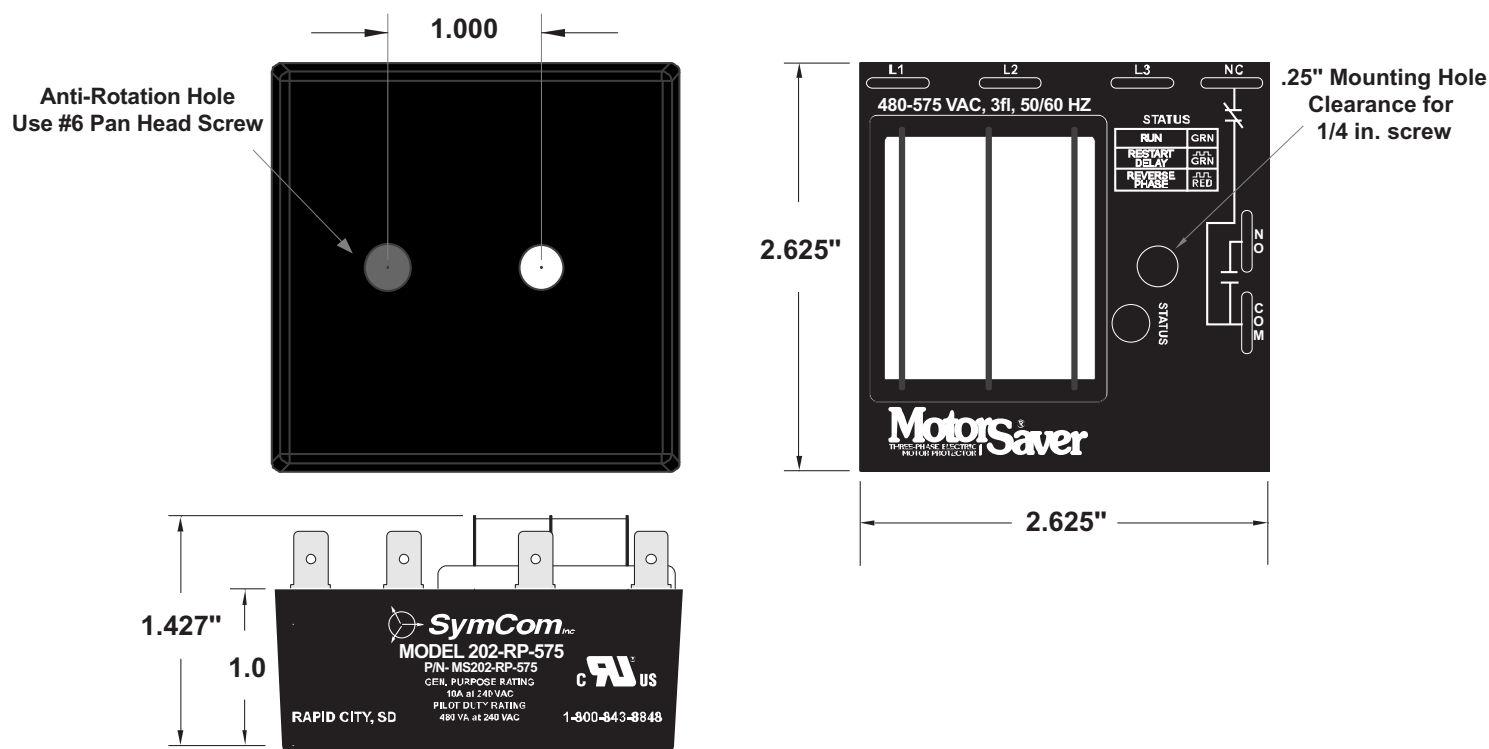
(800) 843-8848 [www.symcom.com](http://www.symcom.com)

# Specifications

3-Phase Line Voltage .....	480 to 575 VAC $\pm$ 10%
Frequency .....	*50 or 60 Hz
Phase Sequence .....	ABC
Restart Delay Time.....	2 Seconds
Output Contact Rating	
•SPDT .....	480 VA @ 240 VAC Pilot Duty or 10A @240 VAC Gen. Purpose
Transient Protection .....	IEC 1000-4-5, $\pm$ 4kV
Power Consumption .....	5 Watts (Max.)
Weight .....	8 oz.
Input to Output Dielectric .....	1960 Vrms min.
Termination.....	0.25" Male Quick Connect
Humidity .....	95% Relative Non Condensing
Operating Temperature .....	-40 to +70° C
CE Pending	
UL Recognized .....	File # E68520 

\*Note: 50 Hz will increase all delay timers by 20%.

## DIMENSIONS FOR MODEL 202-RP-575



## WARRANTY

Seller warrants to the buyer that products furnished will be free from defects in material and workmanship, exclusive of corrosion, for a period of five years from the date of shipment from its factory, provided said products have been installed, maintained and operated in conformance with any applicable specifications and recommendations of the Seller. The Seller's liability under this warranty shall be limited to the replacement within the aforesaid time of any defective work or material limited at the Seller's factory and shall not be liable for any labor or other repair costs made outside the Seller's factory without the written consent of the Seller. The Seller shall be liable for no other damages or losses. The warranty described in this paragraph shall be IN LIEU OF ANY OTHER WARRANTY EXPRESSED OR IMPLIED INCLUDING BUT NOT LIMITED TO ANY IMPLIED WARRANTY OF MERCHANTABILITY OR FITNESS FOR A PARTICULAR PURPOSE.