

## Specification Status: Released

### Marking:

XX 35 R 20 HB

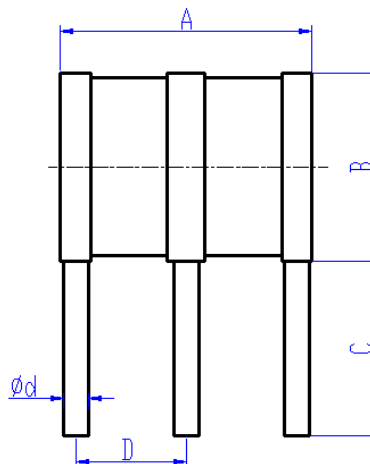
Week of Manufacture  
Per Circuit Protection  
Lot numbering system  
Eg. H = Second half of 2004; B = week 2

Surge Rating  
20: 20kA

Product Family

Voltage Designator  
35: 350V

Manufacturer Mark



**TABLE I. DIMENSIONS**

	A		B		C		D		Ød
	MIN	MAX	MIN	MAX	MIN	MAX	MIN	MAX	NOM
mm:	9.7	10.3	7.3	7.7	6.5	7.5	4.1	4.7	1.0
in*:	(0.382)	(0.406)	(0.287)	(0.303)	(0.256)	(0.295)	(0.161)	(0.185)	(0.039)

\*Rounded off approximation

**TABLE II. Electrical Characteristics (Terms and tests in accordance with ITU-T K.12)**

DC Sparkover Voltage	Impulse Sparkover Voltage		Insulation Resistance	Capacitance	Impulse Discharge Current 8/20μs
(A-E) (B-E)	(A-E) (B-E)				(A+B-E)
@ 100V/s	@100V/u s	@1000V/μs	@100V <sub>DC</sub>	@1MHz	10 hits(5hits for each polarity)
350V ± 20%	≤900V	≤1000V	≥ 10,000MΩ	<1.0pF	20kA

Impulse Discharge Current 10/1000 µs	AC Discharge Current, 50 Hz
(A+B-E)	(A+B-E)
300 hits (150hits for each polarity)	Multiple Hits (1s duration: 10 Hits)
200A	20Arms

### General Characteristics

No Radioactive Materials

Storage temperature: -40°C ... +90°C  
Operating temperature: -40°C ... +90°C  
Electrode Material: Ni Plating  
Lead Material: Sn Plating

### Materials Information

RoHS Compliant

Directive 2002/95/EC  
Compliant

ELV Compliant

Directive 2000/53/EC  
Compliant

Pb-Free



Precedence:

Effectivity:

CAUTION:

This specification takes precedence over documents referenced herein.

Reference documents shall be the issue in effect on the date of invitation for bid.

Operation beyond the rated voltage or current may result in rupture, electrical arcing or flame.



Expertise Applied | Answers Delivered

## Gas Discharge Tube

Over-Voltage Protection Device

**PRODUCT: GTCR38-351M-R20**

DOCUMENT: SCD27687

REV LETTER: B

REV DATE: July 26, 2016

PAGE NO.: 2 OF 2

Littelfuse products are not designed for, and shall not be used for, any purpose (including, without limitation, automotive, military, aerospace, medical, life-saving, life-sustaining or nuclear facility applications, devices intended for surgical implant into the body, or any other application in which the failure or lack of desired operation of the product may result in personal injury, death, or property damage) other than those expressly set forth in applicable Littelfuse product documentation. Warranties granted by Littelfuse shall be deemed void for products used for any purpose not expressly set forth in applicable Littelfuse documentation. Littelfuse shall not be liable for any claims or damages arising out of products used in applications not expressly intended by Littelfuse as set forth in applicable Littelfuse documentation. The sale and use of Littelfuse products is subject to Littelfuse Terms and Conditions of Sale, unless otherwise agreed by Littelfuse.