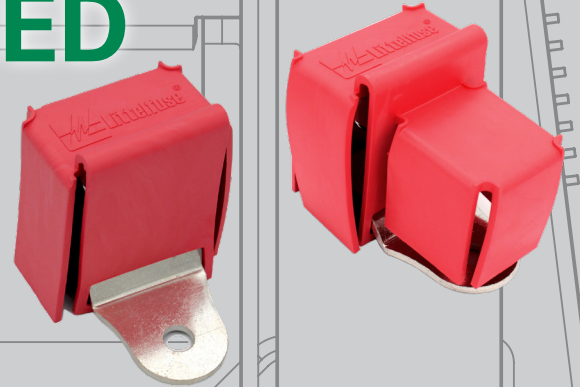


SMZ SERIES STUD MOUNT ZCASE FUSE HOLDER

**COMPACT DESIGNED
TO SAVE SPACE
REDUCES
WIRE CONNECTIONS**



The ZCASE® SMZ Series Bolt-Down Stud-Mount Fuse Holder reduces the need for wiring and parts by allowing ZCASE® high-current fuses to be directly installed on an alternator, battery switch, or electrical relay. Thanks to an insulated M8 or M10 stud on the busbar, the compatible fuse (sold separately) and output cable with a ring terminal (not included) can be assembled using the included standard nut. There is no need to buy a specialized nylon nut.

Features and Benefits

- Accepts high-current ZCASE® single bolt-down M8-size or M10-size fuses, depending on the model (fuses sold separately)
- Available mounting hole sizes include M6, M8, and M10
- Up to 3 SMZ Series fuse holders can be stacked to protect multiple circuits
- Space-saving design eliminates the need to wire in a separate fuse holder or power distribution module (PDM)
- Tin-plated copper busbar offers corrosion resistance
- Red UL 94 V-0 rated cover is offered in 2 styles to provide protection from accidental contact - one option covers the fuse only, while the other option covers the fuse and the mounting stud
- Total continuous current should not exceed 400A per holder

Web Resources

For more information and to download the datasheet, 2D Print and 3D Model, visit: Littelfuse.com/SMZ



Datasheet



Instructions Sheet



2D Print

Ordering Information

PART NUMBER	DESCRIPTION	CURRENT RATING MAX	FUSE TYPE	MOUNTING METHOD	MAX VOLTAGE RATING
0FHZ0201Z	32V Bolt-Down ZCASE® SMZ Series Stud-Mount Fuse Holder with M8 Mounting Hole and Fuse & Stud Cover	400A	ZCASE	M8 Stud Mount	32V
0FHZ0202Z	32V Bolt-Down ZCASE® SMZ Series Stud-Mount Fuse Holder with M8 Mounting Hole and Fuse Cover	400A	ZCASE	M8 Stud Mount	32V
0FHZ0211Z	32V Bolt-Down ZCASE® SMZ Series Stud-Mount Fuse Holder with M10 Mounting Hole and Fuse & Stud Cover	400A	ZCASE	M10 Stud Mount	32V
0FHZ0212Z	32V Bolt-Down ZCASE® SMZ Series Stud-Mount Fuse Holder with M10 Mounting Hole and Fuse Cover	400A	ZCASE	M10 Stud Mount	32V
0FHZ0231Z	32V Bolt-Down ZCASE® SMZ Series Stud-Mount Fuse Holder with M6 Mounting Hole and Fuse & Stud Cover	400A	ZCASE	M6 Stud Mount	32V
0FHZ0232Z	32V Bolt-Down ZCASE® SMZ Series Stud-Mount Fuse Holder with M6 Mounting Hole and Fuse Cover	400A	ZCASE	M6 Stud Mount	32V
0FHZ0233Z	32V Bolt-Down ZCASE® SMZ Series Stud-Mount Fuse Holder with M6 Mounting Hole	400A	ZCASE	M6 Stud Mount	32V
901-524	ZCASE® SMZ Series Fuse Holder Cover for Fuse Only	-	-	-	-
901-525	ZCASE® SMZ Series Fuse Holder Cover for Fuse & Stud	-	-	-	-
0FHZ0241Z	80V Bolt-Down M10 ZCASE® Stud-Mount Fuse Holder	400A	ZCASE	M10 Stud Mount	80V
901-541	Cover for ZCASE® SMZ Series M10 Fuse Holder	-	-	-	-