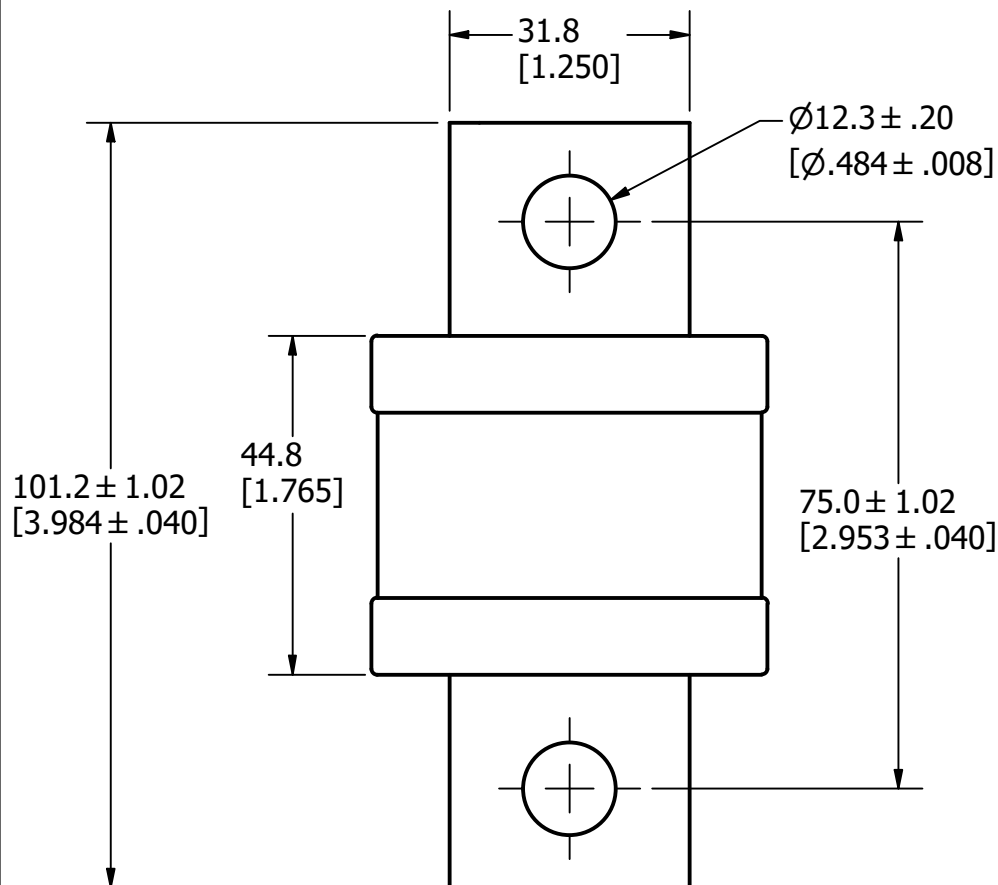


Ø52.4  
[Ø2.062]

7.9 ± .15  
[.312 ± .006]



REVISION		
REV	DATE	DESCRIPTION
A	8/9/22	525545GCP - RELEASE MRY

APPROXIMATE SHIPPING WEIGHT: 1 FUSE / 0.85 LBS.

1					
NO	COMPONENT NO	DESCRIPTION		QTY/M	U/M
BILL OF MATERIAL					
<S>		CRITICAL CHARACTERISTIC FOR PART SAFETY/COMPLIANCE			
●		DENOTES CRITICAL CHARACTERISTICS.			
CPK		DENOTES CPK DIMENSIONS, -MINIMUM CPK VALUE			
⬡ST		DENOTES A CHARACTERISTIC THAT PROVIDES AN INDICATION OF PROCESS PERFORMANCE. PROCEDURE FOR MEASUREMENT AND TRACKING TO BE DEFINED IN LITTELFUSE INSPECTION INSTRUCTIONS.			
CP		DENOTES CP DIMENSIONS, -MINIMUM CP VALUE MUST BE WITHIN THE DIMENSIONAL LIMITATIONS SHOWN ON DRAWING AND INITIALLY LOCATED TO ALLOW FOR MAXIMUM TOOL LIFE.			
MATL SPEC		FINISH			
DRW JMoler		DATE 8/5/2022	SCALE NTS	FINISH GOOD WT GRAMS/PIECE	
UNLESS OTHERWISE SPECIFIED, DIMENSIONS ARE IN MILLIMETERS, DIMENSIONS IN BRACKETS [ ] ARE INCHES DIMENSIONING AND DO NOT INCLUDE PLATING. TOLERANCING TO BE INTERPRETED IN ACCORDANCE WITH ANSI Y14.5M-1994					
3RD ANGLE PROJECTION					
TITLE JLLS 450-600A OUTLINE					
		REVISION A	DRWG NO. OL-JLLS600	SHEET 1 OF 1	