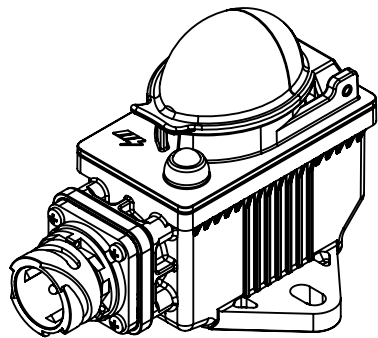
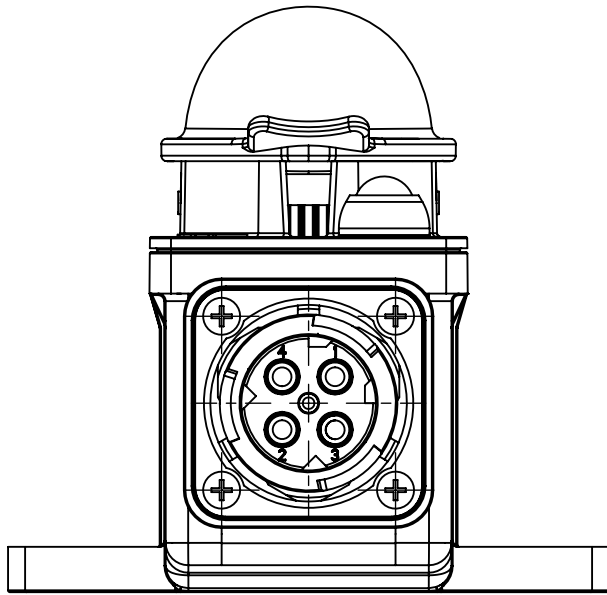
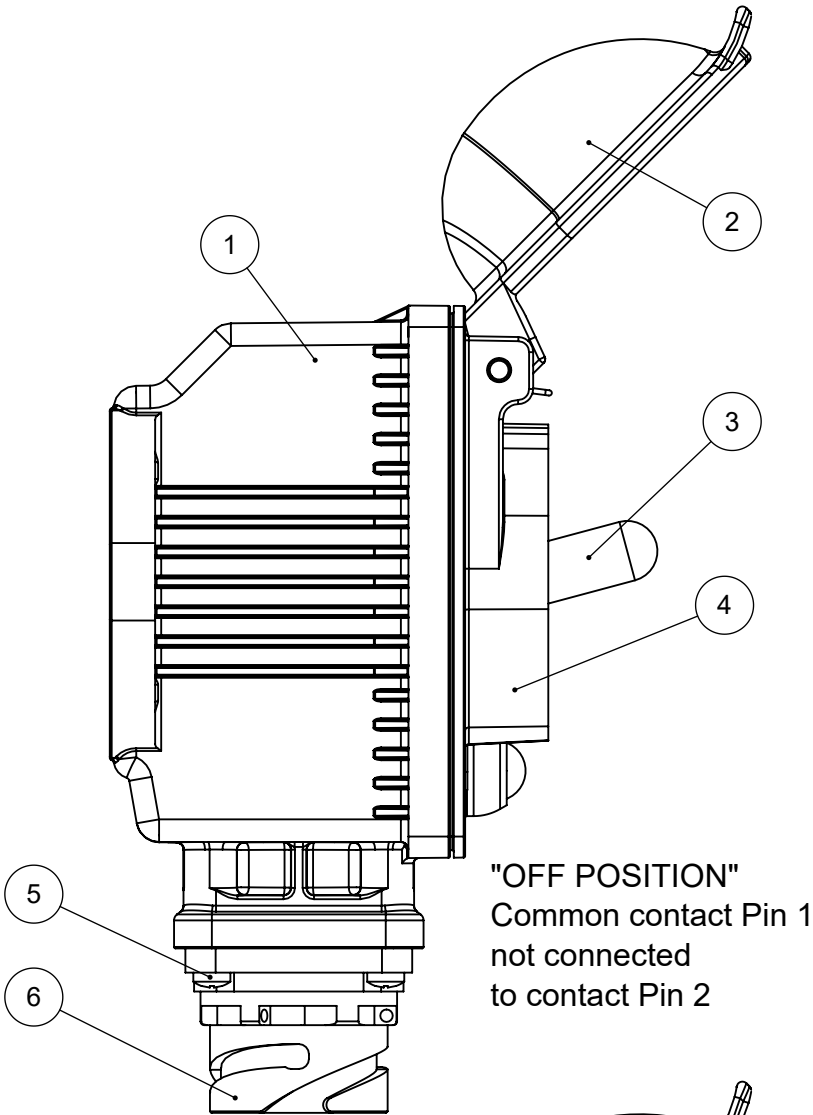
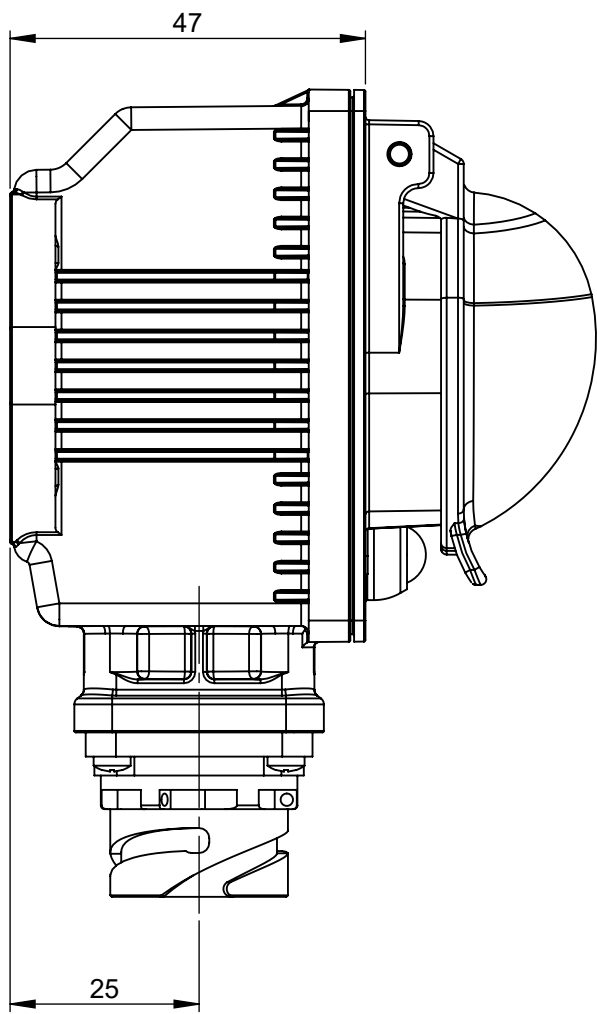
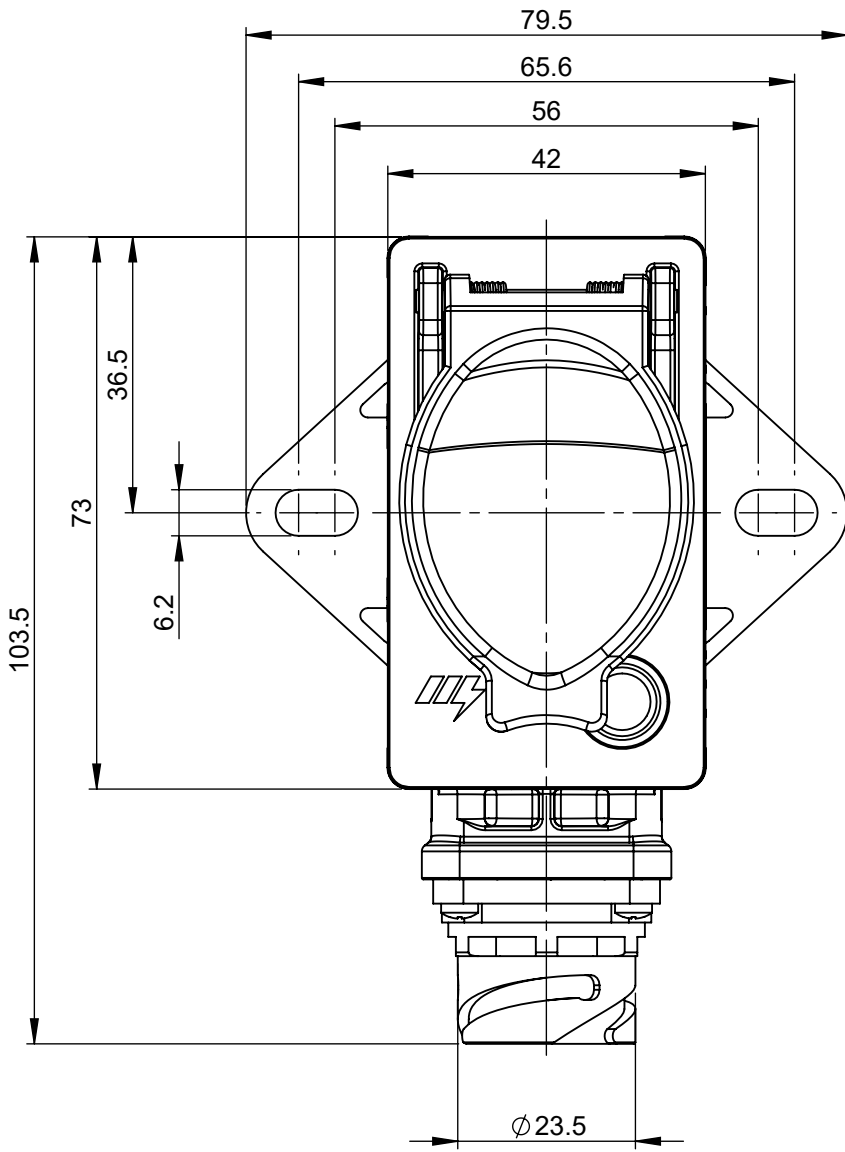


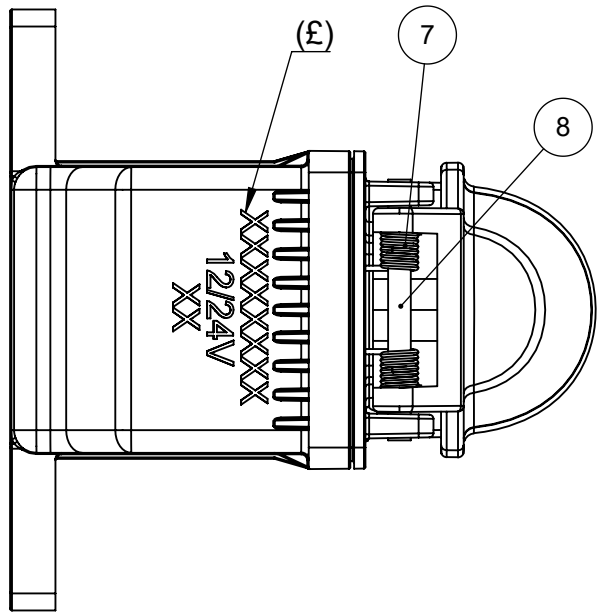
REV.		DESCRIPTION	DATE	GCF / ECR	DESIGNED	APPROVED
A		Initial Release	31-Jan-23		L.Dal Molin	M.Tinto



SCALE 1:2



"OFF POSITION"
Common contact Pin 1
not connected
to contact Pin 2



"(ON) POSITION"
Common contact Pin 1
connected
to contact Pin 2

DOCUMENTO CORRELATO AL CERTIFICATO:
DOCUMENT CORRELATED TO THE CERTIFICATE:

SIRA 04 ATEX 2201X

Non sono ammesse modifiche
senza l' approvazione
della "Persona Autorizzata".
*No modify is allowed without the
"Authorized Person" approval.*

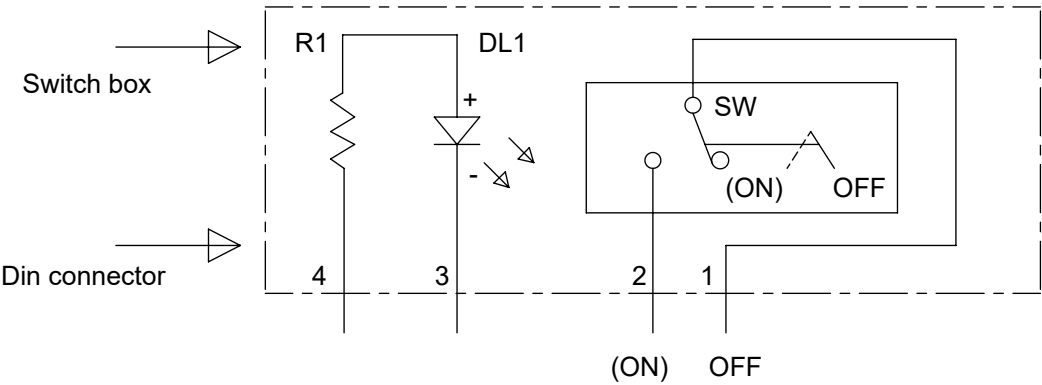
PRESCRIPTIONS

- (£) The device have to be marked with product p/N, working nominal tension and manufacturing date
- It is recommended to fix the device to the structure by means of screws M6 and flat washer 6.4x12.5 by locking torque 8 ± 2 Nm
- To assure the correct work of switch we recommend to operate it simulating an emergency situation once a month
- The functionality of the device is not influenced by the fitting orientation
- The "ON" - "OFF" instructions showed on the drawing are referred to the functions obtained when the device is connected to the battery switches


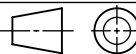
CHARACTERISTICS

- Nominal voltage: 12V or 24V
- Working current: 10A
- Vibrations resistance: - Frequency 10 ÷ 50 Hz
- Acceleration 150m/s²
- Number of electrical and mechanical cycles: 30.000
- Weight of the device: about 0.13 Kg
- Mating connector according to DIN72585 - ISO15170 mechanical polarity code 1

ELECTRICAL DIAGRAM



8	Pin cover	Steel	1	EA
7	Spring for cover	Steel	1	EA
6	Body connector/F 4P	PBT	1	EA
5	Screw TCCCIC 3x12	Steel	4	EA
4	Closing cover complete		1	EA
3	Momentary toggle switch w/ sealing boot		1	EA
2	Cover	Polyamide	1	EA
1	Box for switch	Polyamide	1	EA
POS.	DESCRIPTION	MATERIAL	Q.ty	U/M

DIMENSIONS AND TOLERANCES IN MILLIMETERS. DEFINED ACCORDING TO ISO 1101-2017.				
linear dimensions				
0,5 3	>3 6	>6 30	>30 120	>120 400
±0,2	±0,3	±0,5	±0,8	±1,2
angle (for range of lengths)				
up to 10	>10 50	>50 120	>120 400	
±1°30'	±1°	±0°30'	±0°15'	
●	FIT/ FUNCTION CRITICAL CHARACTERISTICS SYMBOL			
<S>	SAFETY/ COMPLIANCE CRITICAL CHARACTERISTICS SYMBOL			
CPK	DENOTES CPK DIMENSIONS MINIMUM CPK VALUE			
ST	DENOTES A CHARACTERISTIC THAT PROVIDES AN INDICATION OF PROCESS PERFORMANCE.PROCEDURE FOR MEASUREMENTAND TRACKINGTO BE DEFINED IN LITTELFUSE INSPECTION INSTRUCTIONS			
CP	DENOTES CP DIMENSIONS. -MINIMUM CP VALUE MUST BE WITHIN THE DIMENSIONAL LIMITATIONS SHOWN ON DRAWING AND INITIALLY LOCATED TO ALLOW FOR MAXIMUM TOOL LIFE			
NAME		DATE		 Littelfuse® Expertise Applied Answers Delivered
DRAWN		L. Dal Molin		
CHECKED		-		
-		-		
FORM NO. CVP-PE40-0013 REV A		TITLE		
FIRST ANGLE PROJECTION		EXTERNAL EMERGENCY SWITCH OFF-ON		
	SIZE: A2		DWG. NO. OL-00227000	OUTLINE REV. A
DO NOT SCALE DRAWING		SCALE 1:1		SHEET 1 OF 1