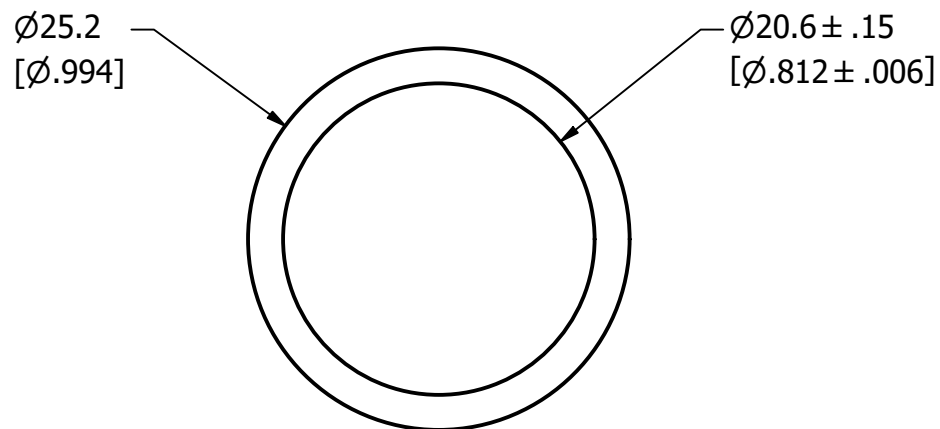
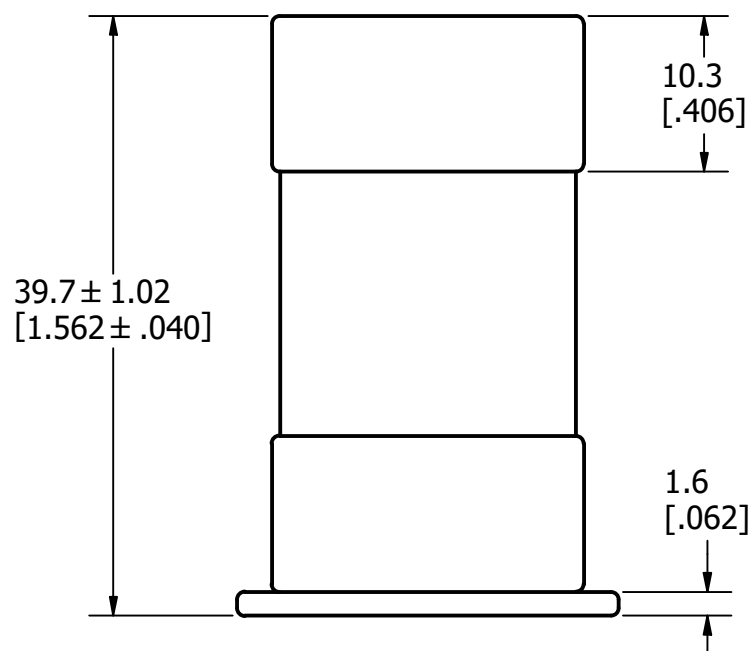



## REVISION

REV	DATE	DESCRIPTION
A	8/9/22	525545GCP - RELEASE MRY



APPROXIMATE SHIPPING WEIGHT: 10 FUSES / 0.84 LBS.



1					
NO	COMPONENT NO	DESCRIPTION		QTY/M	U/M
BILL OF MATERIAL					
<S>		CRITICAL CHARACTERISTIC FOR PART SAFETY/COMPLIANCE			
●		DENOTES CRITICAL CHARACTERISTICS.			
CPK		DENOTES CPK DIMENSIONS, -MINIMUM CPK VALUE			
ST		DENOTES A CHARACTERISTIC THAT PROVIDES AN INDICATION OF PROCESS PERFORMANCE. PROCEDURE FOR MEASUREMENT AND TRACKING TO BE DEFINED IN LITTELFUSE INSPECTION INSTRUCTIONS.			
CP		DENOTES CP DIMENSIONS, -MINIMUM CP VALUE MUST BE WITHIN THE DIMENSIONAL LIMITATIONS SHOWN ON DRAWING AND INITIALLY LOCATED TO ALLOW FOR MAXIMUM TOOL LIFE.			
MATL SPEC			FINISH		
DRW JMoler		DATE 8/3/2022		SCALE NTS	FINISH GOOD WT
			GRAMS/PIEC		
UNLESS OTHERWISE SPECIFIED, DIMENSIONS ARE IN MILLIMETERS, DIMENSIONS IN BRACKETS [ ] ARE INCHES DIMENSIONING AND DO NOT INCLUDE PLATING. TOLERANCING TO BE INTERPRETED IN ACCORDANCE WITH ANSI Y14.5M-1994					
3RD ANGLE PROJECTION					
TITLE					
JLLS 35-60A OUTLINE					
 <b>Littelfuse®</b> CHICAGO, ILLINOIS 60631		REVISION		DRWG NO.	
		A		OL-JLLS060	
				SHEET 1 OF 1	