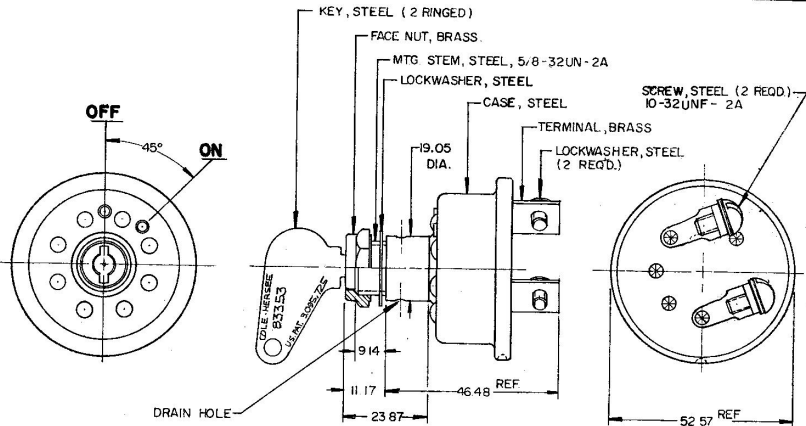


955 97

MM	IN
0.25	.010
3.17	.125
9.14	.360
11.7	.440
19.05	.750
29.87	.940
46.48	1.830
52.57	2.070




NOTES: 1 (F) ALL STEEL PARTS PLATED

Confidential Property of Cole Hersee

METRIC

2. O-RING SEALED AT BUSHING
3. SILVER LAMINATED CONTACT SURFACES
4. 50 AMPS RATING AT 14 VOLTS.

										DO NOT SCALE			
LET	WAS	DATE	BY	LET	WAS	DATE	BY	MATERIAL	DRAWN	CHECKED	APPROVED	SCALE	
								1/1	EA	PK		1:1	DATE DRAWN 12 - 8 - 67
								FINISH 1/1	 Cole Hersee Co. <small>2100 COLONY FORMAL SERVICE ROAD, WILM, DE 19877</small>				DATE BLUEPRINT
								TOLERANCES FRACTIONAL ± DECIMAL ± .25	IGNITION SWITCH				95597