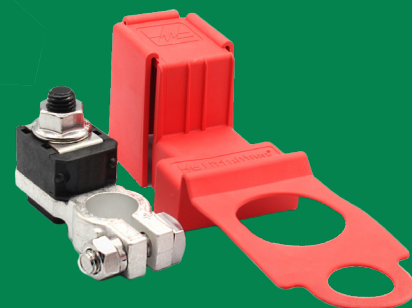


BMZS Series Fuse Holders

Battery-Mounted ZCASE® Fuse Holder with Studs



The ZCASE® BMZS Series 80V Battery-Mounted Fuse Holder with Studs features a forged base with a battery post clamp and pre-installed M10 insulated studs. This high-current fuse holder allows you to connect M10 ZCASE® fuses (sold separately) to a stud-type power source for highamp circuit protection and terminal connections for positive circuits.

Made with forged brass, the battery terminal fuse holder is designed to withstand operation for 10 years and 10,000 hours for heavy-duty, high-current applications in crowded spaces.

The ZCASE® BMZS Series is available as a single-fuse holder as well as a multi-fuse holder (2- or 3- position). The 2-position fuse holder has the option for the included bolt-on battery post adapter to be installed in either of the outer positions.

Features and Benefits

- Pre-installed M10 insulated studs accept ZCASE® M10 high-current bolt-down fuses (sold separately)
- Forged brass design withstands heavy cables and harsh battery box and underhood conditions
- Cover helps prevent short circuiting and damage to the terminals or fuses
- Available in 1-position, 2-position, and 3-position fuse holder configurations
- The 2-position fuse holder comes with a battery post adapter to keep either outer position of the 3-position base unfused

Technical Resources



**BMZS
Datasheet**



**BMZS 2-D
Prints**



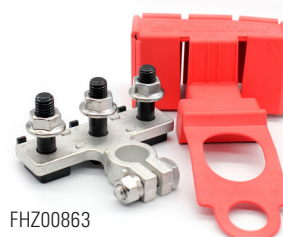
**BMZS 3-D
Renderings**



FHZ00861



FHZ00862



FHZ00863

Ordering Information

SERIES	PART NUMBERS	DESCRIPTION
BMZS	908-082	M10 Insulated Stud for ZCASE® BMZS Series Fuse Holders
	901-731	Cover for 1-Position ZCASE® BMZS Series Fuse Holders
	901-730	Cover for 2- and 3-Position ZCASE® BMZS Series Fuse Holders
	FHZ00861	80V 1-Position Forged Battery-Mounted Fuse Holder Base, Insulated M10 Stud, and Cover - Bulk
	FHZ00862	80V 2-Position Forged Battery-Mounted Fuse Holder with 3-Position Base, Positive Battery Post, 2 Insulated M10 Studs, and Cover - Bulk
	FHZ00863	80V 3-Position Forged Battery-Mounted Fuse Holder Base, 3 Insulated M10 Bolts, and Cover - Bulk